

(SAALR.SAALR2) 20310

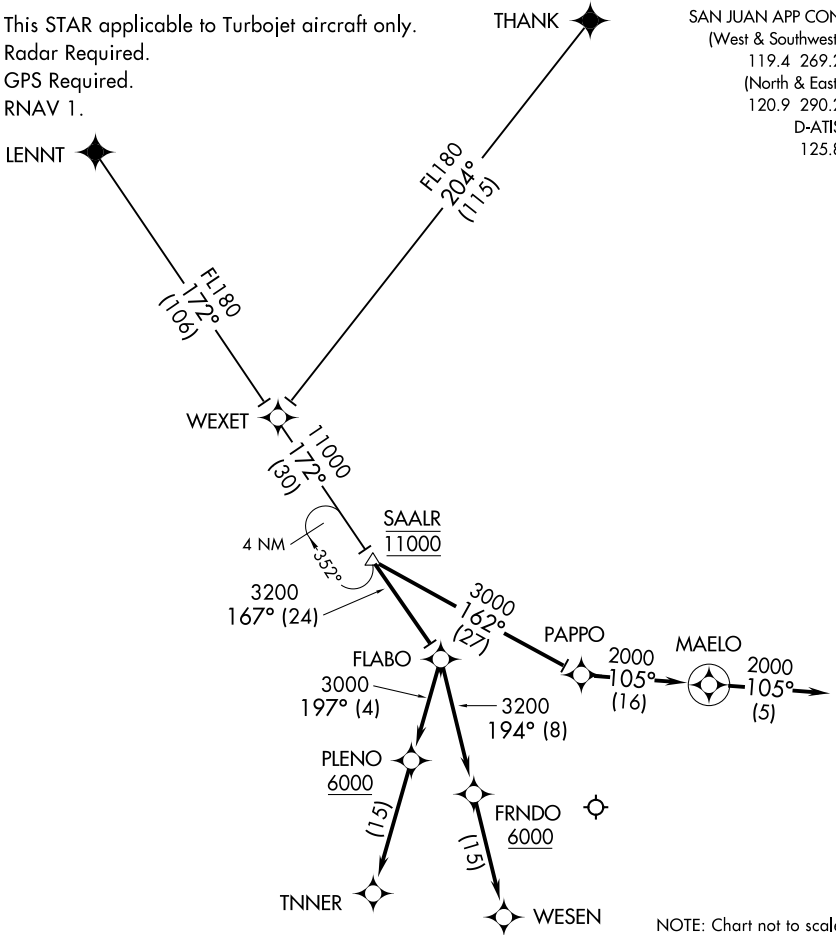
AL-784 (FAA)

LUIS MUNOZ MARIN INTL  
SAN JUAN, PUERTO RICO

# SAALR TWO ARRIVAL (RNAV)

NOTE: This STAR applicable to Turbojet aircraft only.  
NOTE: Radar Required.  
NOTE: GPS Required.  
NOTE: RNAV 1.

SAN JUAN APP CON  
(West & Southwest)  
119.4 269.2  
(North & East)  
120.9 290.2  
D-ATIS  
125.8



NOTE: Chart not to scale.

## ARRIVAL ROUTE DESCRIPTION

LENNT TRANSITION (LENNT.SAALR2):

THANK TRANSITION (THANK.SAALR2):

From WEXET on track 172° to SAALR, then via assigned runway transition.

Landing East Rwy 08: From over SAALR on track 167° to FLABO, then on track 194° to FRNDO, then on track 194° to WESEN.

Landing East Rwy 10: From over SAALR on track 167° to FLABO, then on track 197° to PLENO, then on track 197° to TNNER.

Landing West Rwy 26/28: From over SAALR on track 162° to PAPP0, then on track 105° to MAELO, then on heading 105°. Expect radar vectors to final approach course.

# SAALR TWO ARRIVAL (RNAV)

(SAALR.SAALR2) 23SEP10

SAN JUAN, PUERTO RICO  
LUIS MUNOZ MARIN INTL

SE-3, 16 APR 2026 to 14 MAY 2026

SE-3, 16 APR 2026 to 14 MAY 2026