

(VERMO6.VERMO) 24137

VERMO SIX DEPARTURE

AL-784 (FAA)

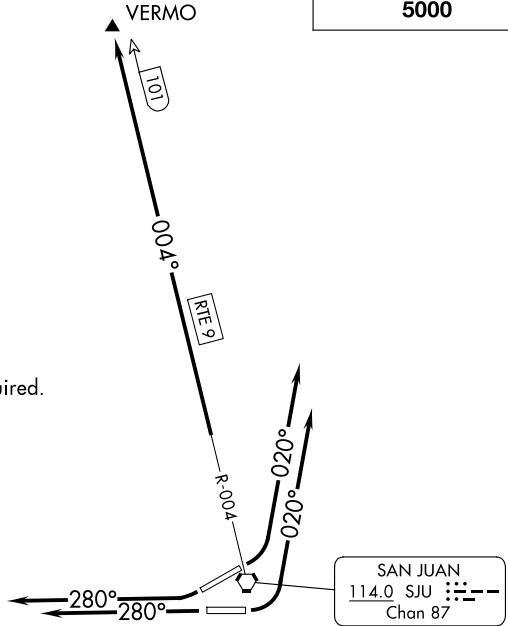
LUIS MUNOZ MARIN INTL (SJU)(TJSJ)

SAN JUAN, PUERTO RICO

D-ATIS
125.8
SAN JUAN TOWER
132.05 257.8
GND CON
121.9 348.6
CLNC DEL
126.4 284.6
CPDLC
SAN JUAN DEP CON
119.4 269.2 (West & SW)
120.9 290.2 (North & East)

**TOP ALTITUDE:
5000**

NOTE: RADAR required.
NOTE: DME or GPS required.



TAKEOFF MINIMUMS
Rwys 8, 10, 26, 28: Standard.

NOTE: Chart not to scale.



DEPARTURE ROUTE DESCRIPTION

TAKEOFF RUNWAY 8: Climb on heading 020° or as assigned by ATC for vectors to intercept SJU VORTAC R-004 to VERMO/101 DME. Thence. . . .

TAKEOFF RUNWAY 10: Climb on heading 020° or as assigned by ATC for vectors to intercept SJU VORTAC R-004 to VERMO/101 DME. Thence. . . .

TAKEOFF RUNWAY 26: Climb on heading 280° or as assigned by ATC for vectors to intercept SJU VORTAC R-004 to VERMO/101 DME. Thence. . . .

TAKEOFF RUNWAY 28: Climb on heading 280° or as assigned by ATC for vectors to intercept SJU VORTAC R-004 to VERMO/101 DME. Thence. . . .

. . . . maintain 5000 unless assigned lower altitude. Expect clearance to FL280, or requested altitude if lower, ten minutes after departure.

VERMO SIX DEPARTURE

(VERMO6.VERMO) 26MAR20

SAN JUAN, PUERTO RICO
LUIS MUNOZ MARIN INTL (SJU)(TJSJ)

SE-3, 16 APR 2026 to 14 MAY 2026

SE-3, 16 APR 2026 to 14 MAY 2026