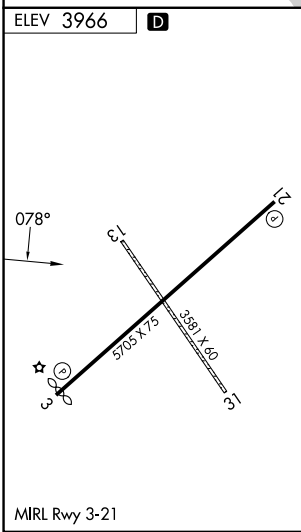
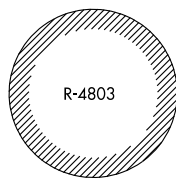
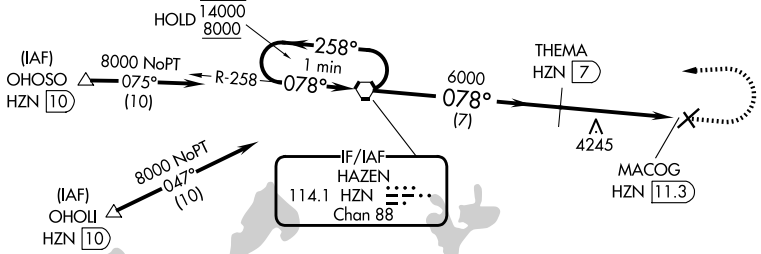
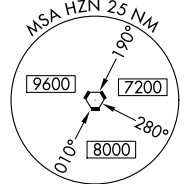


VORTAC HZN 114.1 Chan 88	APP CRS 078°	Rwy Ldg TDZE Apt Elev N/A N/A 3966
--	------------------------	--

VOR-B
FALLON MUNI (F'LX)

DME required.	MISSED APPROACH: Climb to 6100 then climbing left turn to 8000 direct HZN VORTAC and hold.
<p>▼ Circling NA to Rwy 13 and 31. Circling to Rwy 21 NA at night. When local altimeter not received, use Fallon NAS altimeter setting.</p>	

AWOS-AV 118.25	KNFL ATIS* 370.925	NAVY FALLON APP CON* 120.85 360.2	UNICOM 122.8 (CTAF)
--------------------------	------------------------------	---	-------------------------------



One Minute Holding Pattern	HZN VORTAC		6100	8000	HZN
	14000	8000	↑	↶	◻
258° 078°		THEMA HZN (7)	6000		
7 NM		4.3 NM		MACOG HZN (11.3)	
CATEGORY	A	B	C	D	
CIRCLING	4620-1	654 (700-1)	4620-1¾ 654 (700-1¾)	4620-2 654 (700-2)	

SW-4, 16 APR 2026 to 14 MAY 2026

SW-4, 16 APR 2026 to 14 MAY 2026