

LOC I-BLF <b>109.5</b>	APP CRS <b>229°</b>	Rwy Ldg <b>4743</b>
		TDZE <b>2857</b>
		Apt Elev <b>2857</b>

# ILS or LOC RWY 23

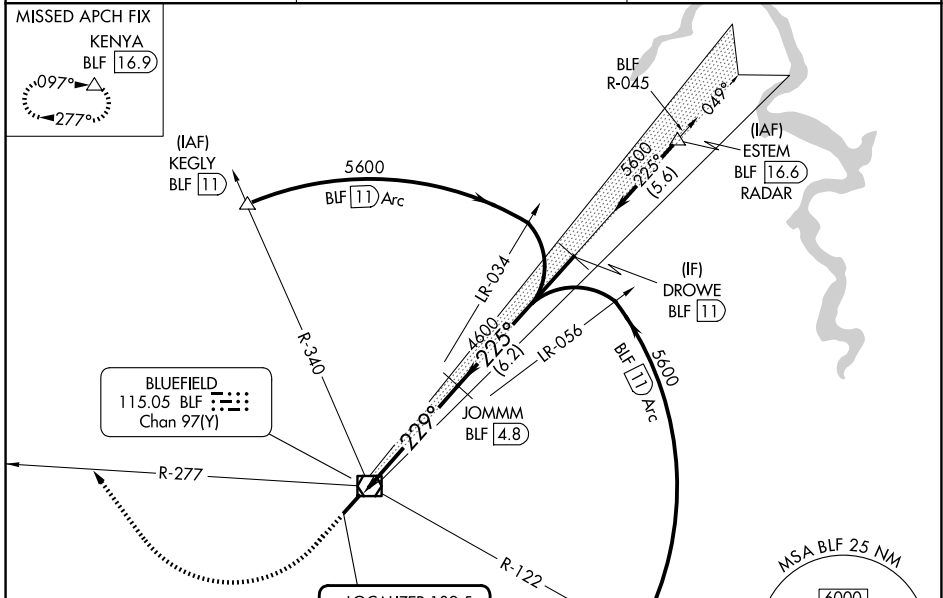
MERCER COUNTY (BLF)

DME required.

**⚠** Autopilot coupled approach NA below 3600 MSL.  
**⚠** NA Circling NA southeast of Rwy 5-23. Rwy 23 helicopter visibility reduction below 3/4 SM NA. Circling Rwy 5 NA at night.

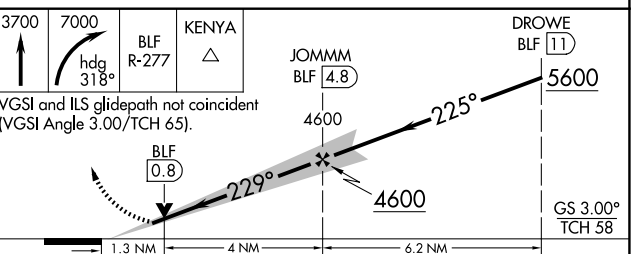
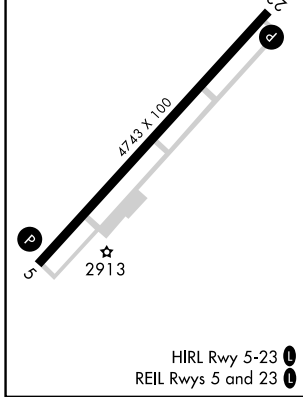
MISSED APPROACH: Climb to 3700 then climbing right turn to 7000 on heading 318° and on BLF VOR/DME R-277 to KENYA INT/BLF 16.9 DME and hold, continue climb-in-hold to 7000.

ASOS <b>132.725</b>	INDIANAPOLIS CENTER <b>126.575 257.85</b>	CTAF <b>122.90</b>
------------------------	--	-----------------------



ELEV 2857	<b>D</b>	TDZE 2857
-----------	----------	-----------

LOCALIZER 109.5  
I-BLF



CATEGORY	A	B	C	D
S-ILS 23	3160-1		303 (400-1)	
S-LOC 23	3320-1	463 (500-1)	3320-1 3/8	463 (500-1 1/2)
CIRCLING	3380-1 523 (600-1)	3440-1 583 (600-1)	3640-2 1/4 783 (800-2 1/4)	3760-3 903 (1000-3)

NE-4, 16 APR 2026 to 14 MAY 2026

NE-4, 16 APR 2026 to 14 MAY 2026