

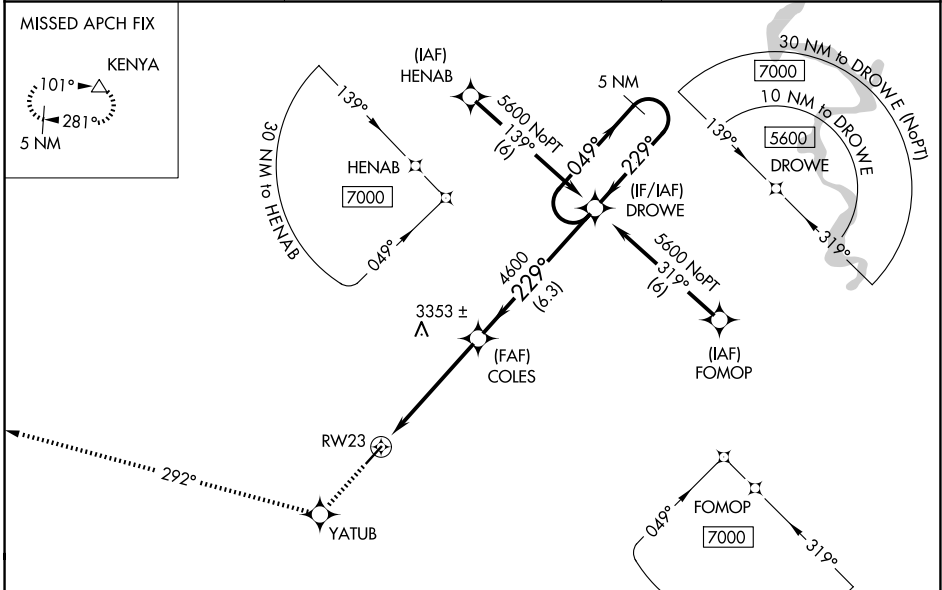
WAAS CH 50207 W23A	APP CRS 229°	Rwy Ldg 4743 TDZE 2856 Apt Elev 2857
--	------------------------	---

RNAV (GPS) RWY 23

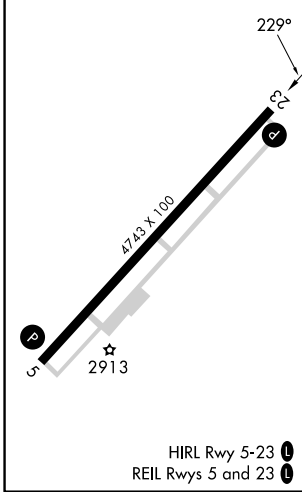
MERCER COUNTY (BLF)

RNP APCH - GPS.	MISSED APPROACH: Climb to 6000 direct YATUB and on track 292° to KENYA and hold.
<p>▼ When local altimeter setting not received, use BKW altimeter setting and increase all DA 443 feet and all MDA 460 feet; increase LPV all Cats visibility to 2 1/2 SM, LNAV Cat A visibility to 1 1/4 SM, Cat B to 1 1/2 SM, and Cat C and D to 3 SM. Rwy 23 helicopter visibility reduction below 3/4 SM NA. VDP NA when using BKW altimeter setting.</p>	

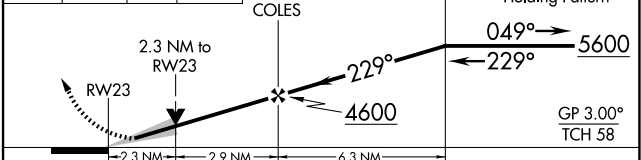
ASOS 132.725	INDIANAPOLIS CENTER 126.575 257.85	CTAF 122.9
------------------------	--	----------------------



ELEV 2857	D TDZE 2856
-----------	--------------------



6000	YATUB	tr 292°	KENYA	VGSI and RNAV glidepath not coincident (VGSI Angle 3.00/TCH 65).
------	-------	---------	-------	--



CATEGORY	A	B	C	D
LPV DA	3156-1 300 (300-1)			
LNAV MDA	3640-1 784 (800-1)	3640-1 1/4 784 (800-1 1/4)	3640-2 1/2 784 (800-2 1/2)	

NE-4, 16 APR 2026 to 14 MAY 2026

NE-4, 16 APR 2026 to 14 MAY 2026