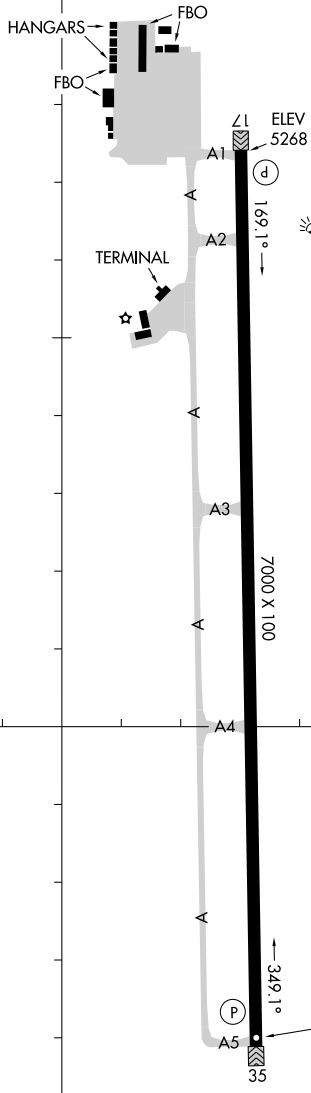


ASOS
118.125
CTAF/UNICOM
122.7
D

109°31'W 109°30'W
40°27'N



RWY 17-35
PCR 230 F/D/X/T
S-45, D-55

MIRL Rwy 17-35
REIL Rwy 17 and 35

VAR 1.69° E
JANUARY 2025
ANNUAL RATE OF CHANGE
0.1° W

FIELD
ELEV
5274

SW-4, 16 APR 2026 to 14 MAY 2026

SW-4, 16 APR 2026 to 14 MAY 2026