

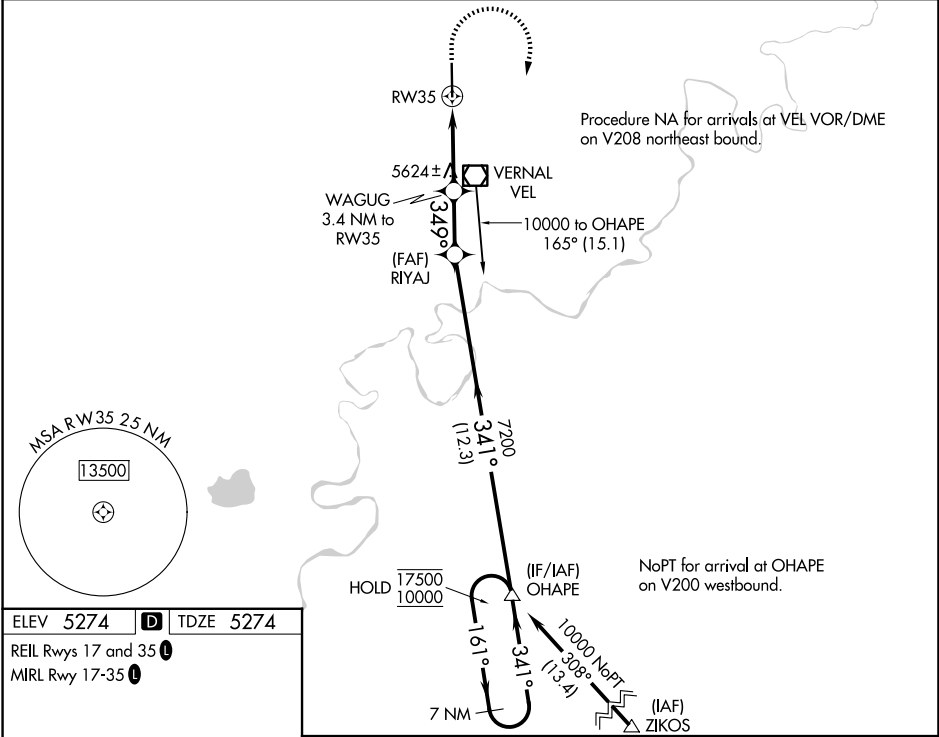
# RNAV (GPS) Y RWY 35

VERNAL RGNL (VEL)

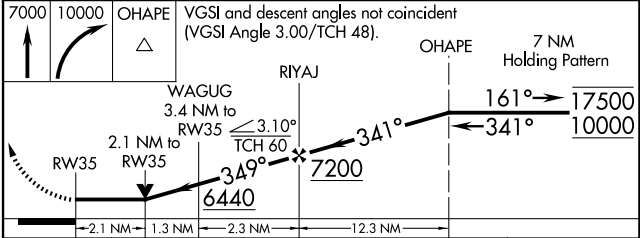
APP CRS	Rwy Ldg	<b>7000</b>
<b>349°</b>	TDZE	<b>5274</b>
	Apt Elev	<b>5274</b>

RNP APCH.	MISSED APPROACH: Climb to 7000 then climbing right turn to 10000 direct OHAPE and hold. *Missed approach requires minimum climb of 300 feet per NM to 7500.
<p>⚠ Circling NA west of Rwy 17-35. Rwy 35 helicopter visibility reduction below ¾ NA.</p> <p>❄ -26°C</p>	

ASOS <b>118.125</b>	SALT LAKE CENTER <b>119.95 377.15</b>	UNICOM <b>122.7 (CTAF)</b>
------------------------	--	-------------------------------



ELEV 5274	<b>D</b>	TDZE 5274
REIL Rws 17 and 35		
MIRL Rwy 17-35		

7000	10000	OHAPE	VGSI and descent angles not coincident (VGSI Angle 3.00/TCH 48).	
			OHAPE	7 NM Holding Pattern
			WAGUG 3.4 NM to RWY 35	RIYAJ
			2.1 NM to RWY 35	3.10° TCH 60
			6440	7200
			2.1 NM	1.3 NM
			2.3 NM	12.3 NM

CATEGORY	A	B	C	D
LNAV MDA*	5980-1	706 (800-1)	5980-2	706 (800-2)
LNAV MDA	6380-1½ 1106 (1200-1½)	6380-1½ 1106 (1200-1½)	6380-3	1106 (1200-3)
CIRCLING	6380-1½ 1106 (1200-1½)	6380-1½ 1106 (1200-1½)	6380-3 1106 (1200-3)	6400-3 1126 (1200-3)

# RNAV (GPS) Y RWY 35

SW-4, 16 APR 2026 to 14 MAY 2026

SW-4, 16 APR 2026 to 14 MAY 2026