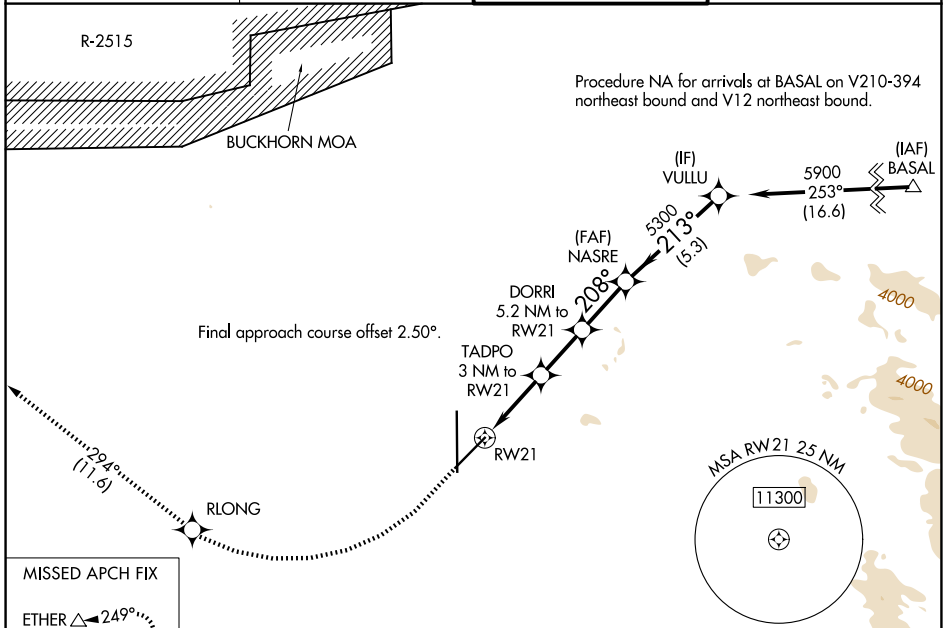


WAAS CH <b>82246</b> <b>W21A</b>	APP CRS <b>208°</b>	Rwy Ldg TDZE Apt Elev	<b>9138</b> <b>2858</b> <b>2885</b>
--	------------------------	-----------------------------	---

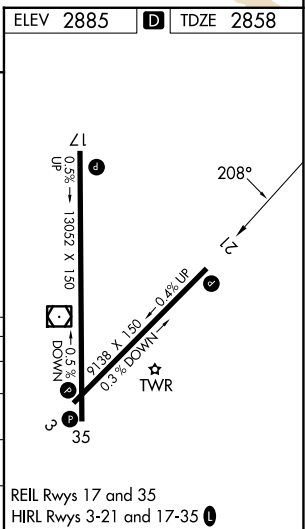
# RNAV (GPS) RWY 21

SOUTHERN CALIFORNIA LOGISTICS (V'CV)

RNP APCH - GPS.		MISSED APPROACH: Climb to 3500 then climbing right turn to 6000 direct RLONG and on track 294° to ETHER and hold.	
⚠ Circling NA for C and D southeast of Rwy 35 and 21. ⚠ For uncompensated Baro-VNAV systems, LNAV/VNAV NA below -20°C or above 54°C.			
ATIS <b>135.475</b>	JOSHUA APP CON <b>124.55 363.0</b>	VICTORVILLE TOWER * <b>118.35 (CTAF) 282.225</b>	GND CON <b>124.45</b>



MISSED APCH FIX		ETHER ⚠ 249° 069° 7 NM								
3500	6000	RLONG	tr 294°	ETHER	VGSI and RNAV glidepath not coincident (VGSI Angle 3.00/TCH 85).	VULLU				
RW21 1.7 NM to RW21 TADPO 3 NM to RW21 DORRI 5.2 NM to RW21 NASRE 5300 VULLU 5900 GP 3.00° TCH 60		208° 213° 3860 4560 5300								
1.7 NM		1.3 NM		2.2 NM		2.3 NM		5.3 NM		
CATEGORY	A	B		C		D				
LPV DA	3108-1		250 (300-1)							
LNAV/VNAV DA	3153-1		295 (300-1)							
LNAV MDA	3480-1	622 (600-1)		3480-1¾		622 (600-1¾)				
CIRCLING	3480-1	595 (600-1)		3480-1¾		3760-2¾		875 (900-2¾)		



SW-3, 16 APR 2026 to 14 MAY 2026

SW-3, 16 APR 2026 to 14 MAY 2026

REIL Rwy 17 and 35  
HIRL Rwy 3-21 and 17-35