

WAAS CH 78207 W15A	APP CRS 146°	Rwy Ldg TDZE Apt Elev	5006 2193 2193
---------------------------------	------------------------	-----------------------------	---

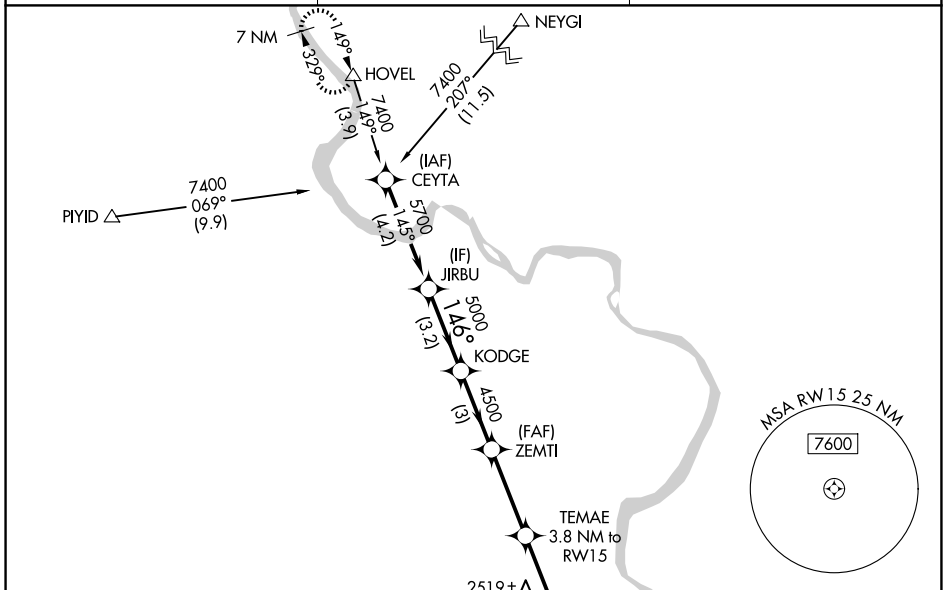
RNAV (GPS) RWY 15

ONTARIO MUNI (ON0)

⚠ Baro-VNAV NA when using Caldwell altimeter setting. For uncompensated Baro-VNAV systems, LNAV/VNAV NA below -18°C (0°F) or above 54°C (130°F). DME/DME RNP-0.3 NA. When local altimeter setting not received, use Caldwell altimeter setting and increase LPV DA to 2867 feet, LNAV/VNAV DA to 2911 feet, and all MDA 100 feet; increase LPV visibility, all Cats by ½ SM, increase LNAV visibility Cats C/D and Circling Cat C by ¼ SM. Rwy 15 helicopter visibility reduction below 1 SM NA. Straight-in Rwy 15 NA at night, Circling Rwy 15 NA at night.

MISSED APPROACH:
Climbing right turn to 9000 direct HOVEL and hold, continue climb-in-hold to 9000.

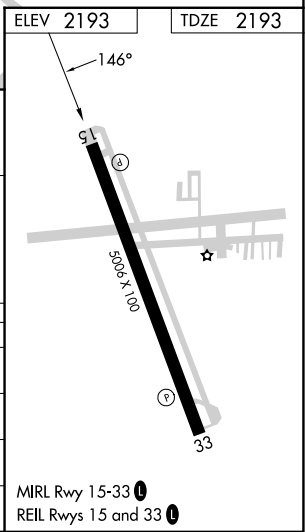
ASOS 135.275	SALT LAKE CENTER 128.05 306.95	UNICOM 122.8 (CTAF) 0
------------------------	--	---------------------------------



NW-1, 16 APR 2026 to 14 MAY 2026

NW-1, 16 APR 2026 to 14 MAY 2026

JIRBU	KODGE	ZEMTI	TEMAE	9000	HOVEL
5700	5000	4500	3.8 NM to RW15	9000	△
GP 3.00°	146°	4500	*3440	*LNAV only	
TCH 40	3.2 NM	3 NM	3.3 NM	3.8 NM	RW15



CATEGORY	A	B	C	D
LPV DA	2769-2 576 (600-2)			
LNAV/VNAV DA	2814-2½ 621 (700-2½)			
LNAV MDA	2780-1 587 (600-1)	2780-1¾ 587 (600-1¾)		
CIRCLING	2780-1 587 (600-1)	2800-1 607 (700-1)	3120-2¾ 927 (1000-2¾)	3240-3 1047 (1100-3)