

WAAS CH <b>69401</b> <b>W17A</b>	APP CRS <b>175°</b>	Rwy Ldg <b>6002</b> TDZE <b>541</b> Apt Elev <b>548</b>
--	------------------------	---

# RNAV (GPS) RWY 17

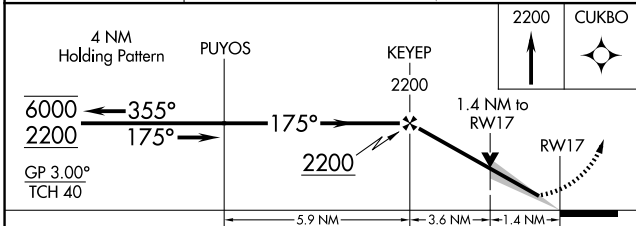
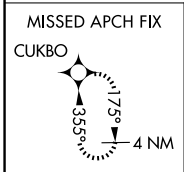
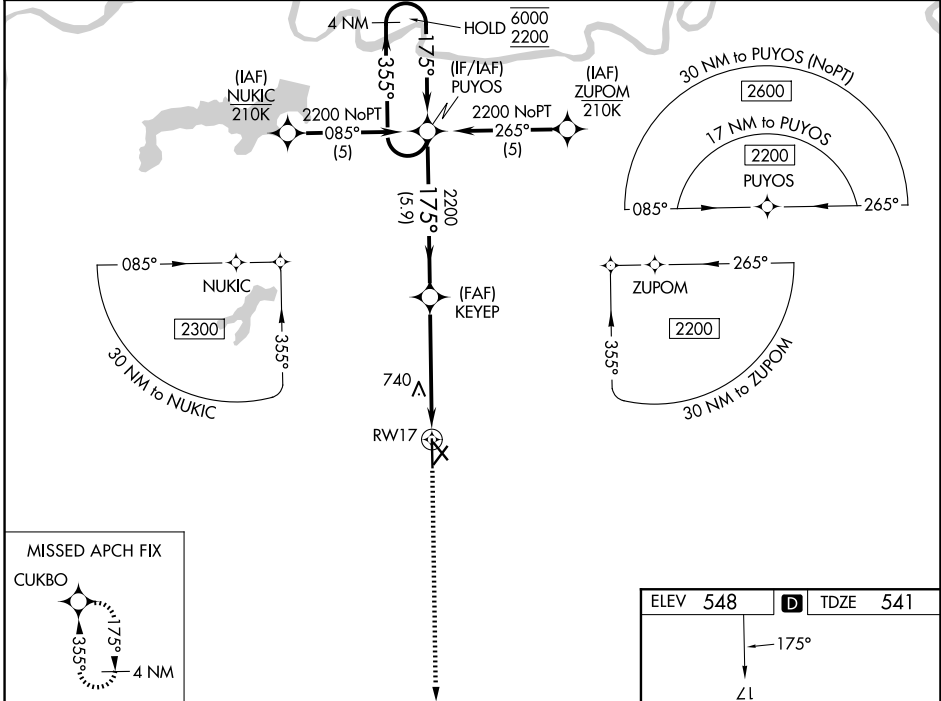
COX FLD (PRX)

RNP APCH - GPS.

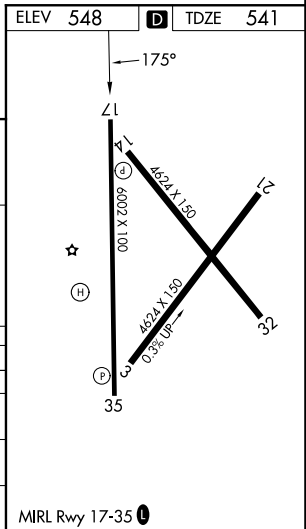
▼ Baro-VNAV and VDP NA when using SLR altimeter setting. For uncompensated Baro-VNAV systems, LNAV/VNAV NA below -8°C or above 54°C. When local altimeter setting not received, use SLR altimeter setting and increase LPV DA to 868 feet and all visibilities ¼ SM. Increase LNAV/VNAV DA to 1016 feet and all visibilities ¼ SM. Increase all MDAs 80 feet and LNAV visibility Cat C/D ¼ SM, and Circling visibility Cat C/D ¼ SM.

MISSED APPROACH:  
Climb to 2200 direct  
CUKBO and hold.

AWOS-3PT <b>119.675</b>	FORT WORTH CENTER <b>124.875 370.95</b>	UNICOM <b>122.975 (CTAF)</b>
----------------------------	--	---------------------------------



CATEGORY	A	B	C	D
LPV DA		791- <sup>3</sup> / <sub>4</sub>	250 (300- <sup>3</sup> / <sub>4</sub> )	
LNAV/VNAV DA		939-1 <sup>1</sup> / <sub>8</sub>	398 (400-1 <sup>1</sup> / <sub>8</sub> )	
LNAV MDA	1040-1	499 (500-1)	1040-1 <sup>3</sup> / <sub>8</sub>	499 (500-1 <sup>3</sup> / <sub>8</sub> )
CIRCLING	1060-1	512 (600-1)	1100-1 <sup>1</sup> / <sub>2</sub> 552 (600-1 <sup>1</sup> / <sub>2</sub> )	1220-2 <sup>1</sup> / <sub>4</sub> 672 (700-2 <sup>1</sup> / <sub>4</sub> )



SC-2, 16 APR 2026 to 14 MAY 2026

SC-2, 16 APR 2026 to 14 MAY 2026