

WAAS CH <b>63001</b> <b>W35A</b>	APP CRS <b>355°</b>	Rwy Ldg <b>6002</b> TDZE <b>532</b> Apt Elev <b>548</b>
--	------------------------	---

# RNAV (GPS) RWY 35

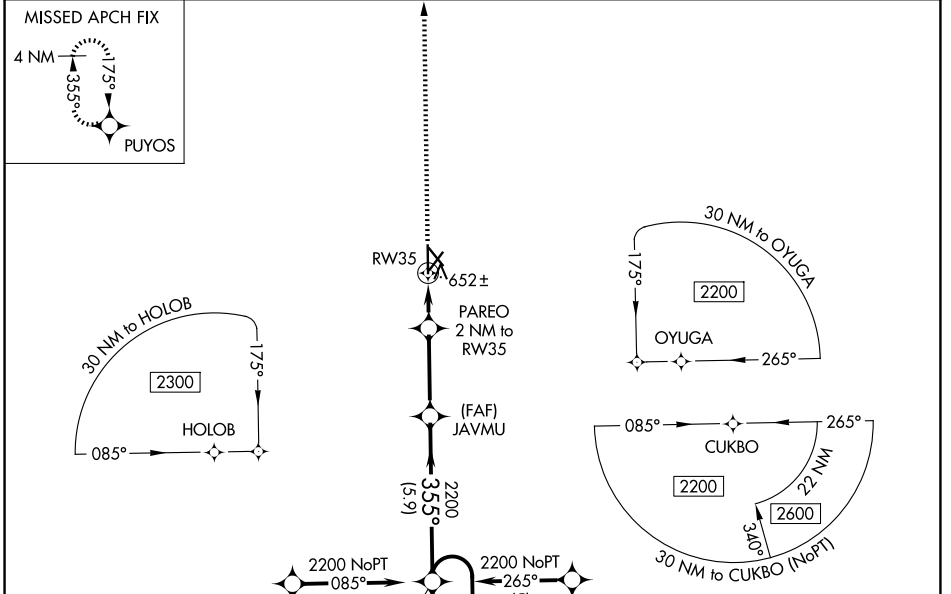
COX FLD (P.R.X)

RNP APCH - GPS.

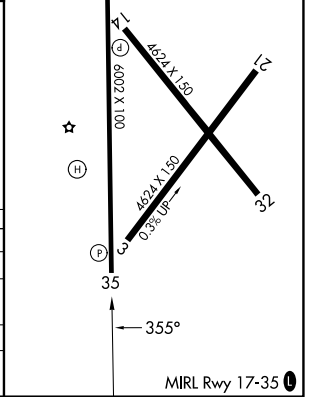
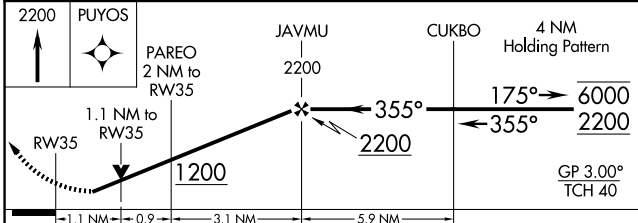
▼ For uncompensated Baro-VNAV systems, LNAV/VNAV NA below -8°C or above 54°C. Baro-VNAV and VDP NA when using SLR altimeter setting. Rwy 35 helicopter visibility reduction below 3/4 SM NA. When local altimeter setting not received, use SLR altimeter setting and increase LPV DA to 859 feet and all visibilities 1/4 SM. Increase LNAV/VNAV DA to 1002 feet and all visibilities 1/4 SM. Increase all MDAs 80 feet and LNAV visibility Cat C/D 1/4 SM, and Circling visibility Cat C/D 1/4 SM.

⚠ MISSED APPROACH: Climb to 2200 direct PUYOS and hold.

AWOS-3PT <b>119.675</b>	FORT WORTH CENTER <b>124.875 370.95</b>	UNICOM <b>122.975</b> (CTAF) <b>1</b>
----------------------------	--	--



ELEV <b>548</b>	<b>D</b>	TDZE <b>532</b>
-----------------	----------	-----------------



CATEGORY	A	B	C	D
LPV DA		782-3/4	250 (300-3/4)	
LNAV/VNAV DA		925-1 1/8	393 (400-1 1/8)	
LNAV MDA	920-1	388 (400-1)	920-1 1/8	388 (400-1 1/8)
CIRCLING	1060-1	512 (600-1)	1100-1 1/2 552 (600-1 1/2)	1220-2 1/4 672 (700-2 1/4)

SC-2, 16 APR 2026 to 14 MAY 2026

SC-2, 16 APR 2026 to 14 MAY 2026