

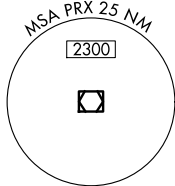
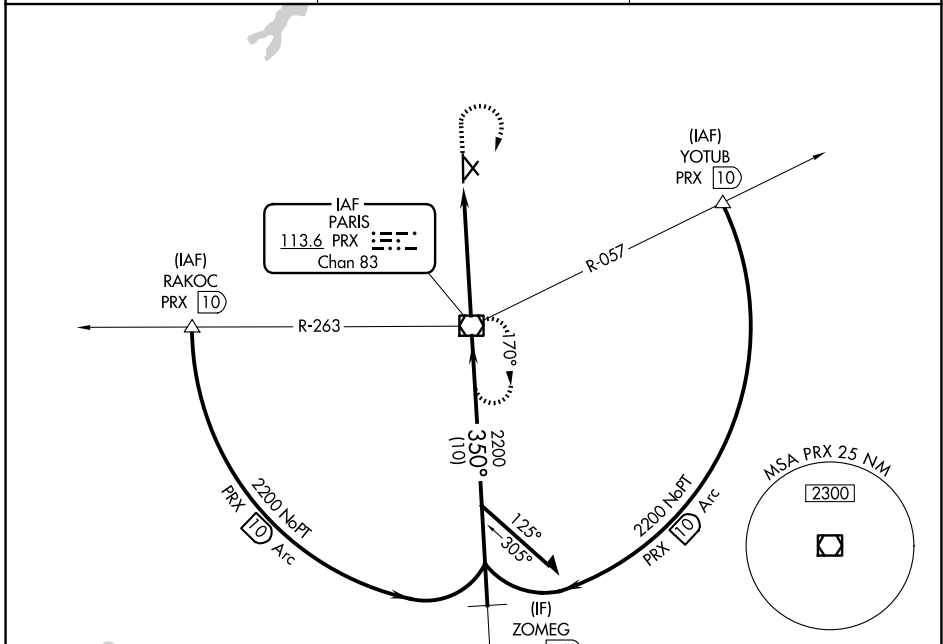
VOR/DME PRX 113.6 Chan 83	APP CRS 350°	Rwy Ldg TDZE Apt Elev	6002 532 548
---	------------------------	-----------------------------	---

VOR RWY 35

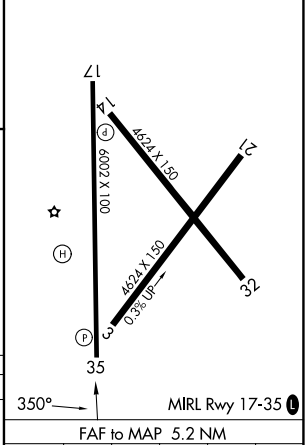
COX FLD (PRX)

▼ Rwy 35 helicopter visibility reduction below 3/4 SM NA.
▲ MISSED APPROACH: Climb to 2000 then climbing right turn to 2300 direct PRX VOR/DME and hold.

AWOS-3PT 119.675	FORT WORTH CENTER 124.875 370.95	UNICOM 122.975 (CTAF)
----------------------------	--	---------------------------------



ELEV 548	D TDZE 532
----------	-------------------



2000	2300	PRX
↑	↷	☐
PRX 5.2	PRX 3.9	PRX VOR/DME
1.2	3.9 NM	Remain within 10 NM
350°	350°	2200
2.96° TCH 53	VGS I and descent angles not coincident (VGS I Angle 3.00/TCH 40).	

CATEGORY	A	B	C	D
S-35	960-1	428 (500-1)	960-1 1/4	428 (500-1 1/4)
CIRCLING	1060-1	512 (600-1)	1100-1 1/2	1220-2 1/4
			552 (600-1 1/2)	672 (700-2 1/4)

350°	MIRL Rwy 17-35
FAF to MAP 5.2 NM	
Knots	60 90 120 150 180
Min:Sec	5:12 3:28 2:36 2:05 1:44

SC-2, 16 APR 2026 to 14 MAY 2026

SC-2, 16 APR 2026 to 14 MAY 2026