

RNAV 1 - DME/DME/IRU or GPS.
RADAR required.

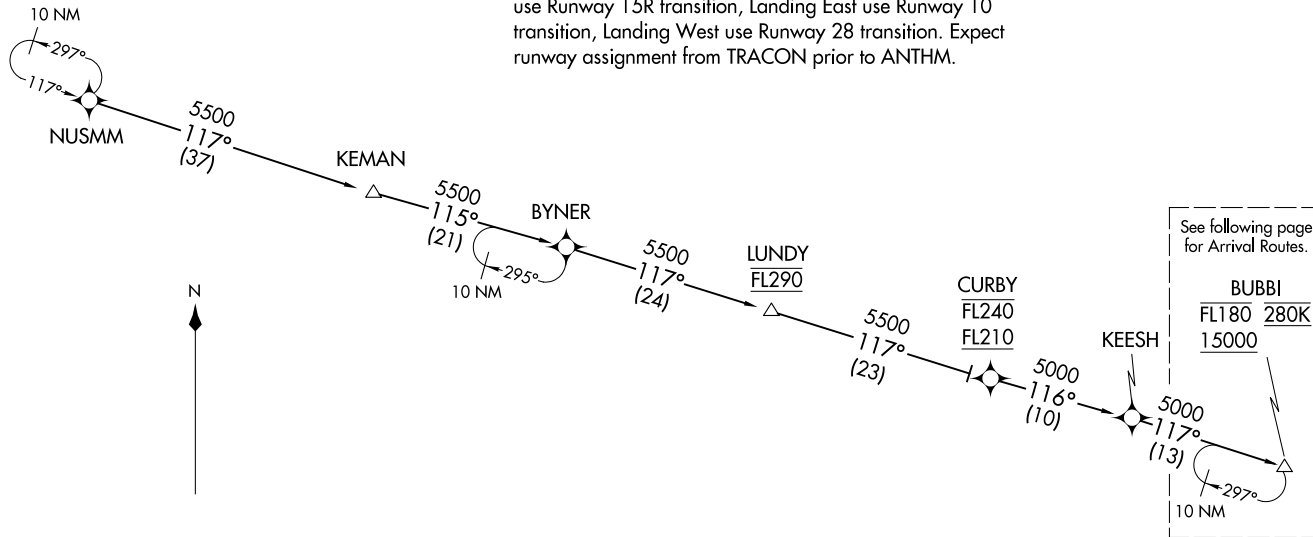
- NOTE: Jet aircraft only.
- NOTE: PROHIBITED AREA (P-56) 1.5 NM north of DCA avoid surface to 18000 MSL.
- NOTE: Landing North use Runway 33L transition, Landing South use Runway 15R transition, Landing East use Runway 10 transition, Landing West use Runway 28 transition. Expect runway assignment from TRACON prior to ANTHM.

ANTHM FIVE ARRIVAL (RNAV) 26DEC24

ANTHM FIVE ARRIVAL (RNAV) Transition Routes

BALTIMORE, MARYLAND

POTOMAC APP CON
133.85 254.25
BWI D-ATIS
115.1 127.8
MTN ATIS
124.925



KEESH TRANSITION (KEESH.ANTHM5)
KEMAN TRANSITION (KEMAN.ANTHM5)
NUSMM TRANSITION (NUSMM.ANTHM5)

(CONTINUED ON FOLLOWING PAGES)

NOTE: Chart not to scale.

(BUBBI.ANTHM5) 24361

ANTHM FIVE ARRIVAL (RNAV) Transition Routes

BALTIMORE, MARYLAND

AL-804 (FAA)

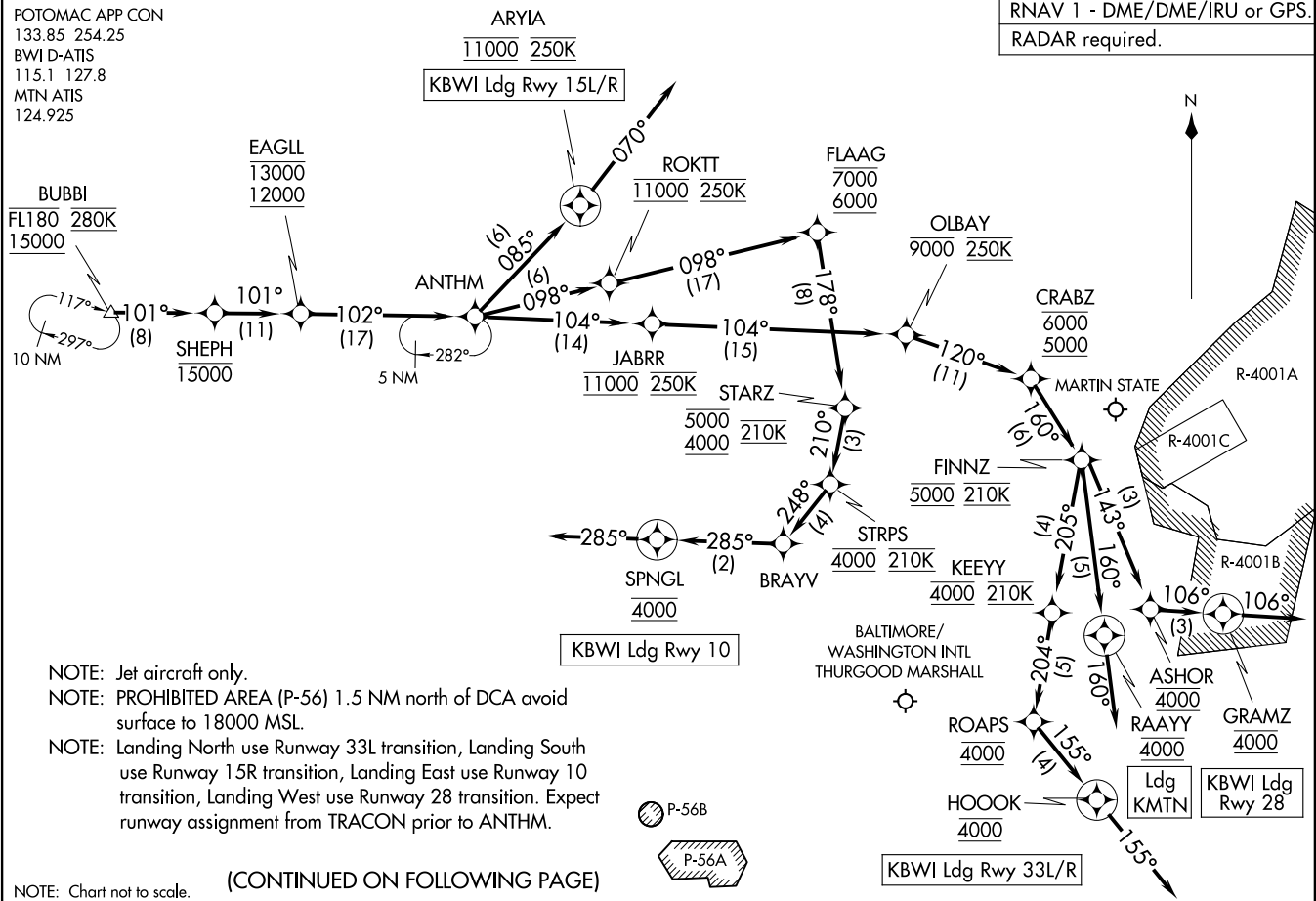
ANTHM FIVE ARRIVAL (RNAV) Arrival Routes
(BUBBI,ANTHM5) 26DEC24

(BUBBI,ANTHM5) 24361
ANTHM FIVE ARRIVAL (RNAV) Arrival Routes

AL-804 (FAA)

BALTIMORE, MARYLAND

RNAV 1 - DME/DME/IRU or GPS.
RADAR required.



NOTE: Jet aircraft only.
NOTE: PROHIBITED AREA (P-56) 1.5 NM north of DCA avoid surface to 18000 MSL.
NOTE: Landing North use Runway 33L transition, Landing South use Runway 15R transition, Landing East use Runway 10 transition, Landing West use Runway 28 transition. Expect runway assignment from TRACON prior to ANTHM.

NOTE: Chart not to scale.

(CONTINUED ON FOLLOWING PAGE)

BALTIMORE, MARYLAND

ARRIVAL ROUTE DESCRIPTION

BWI: From BUBBI on track 101° to cross SHEPH at or below 15000, then on track 101° to cross EAGLL between 12000 and 13000, then on track 102° to ANTHM.

LANDING BWI RUNWAY 10: From ANTHM on track 098° to cross ROKTT at 11000 and at 250K, then on track 098° to cross FLAAG between 6000 and 7000, then on track 178° to cross STARZ between 4000 and 5000 and at 210K, then on track 210° to cross STRPS at 4000 and at 210K, then on track 248° to BRAYV, then on track 285° to cross SPNGL at 4000, then on heading 285°. Expect RADAR vectors to final approach course.

LANDING BWI RUNWAY 15L/R: From ANTHM on track 085° to cross ARYIA at 11000 and at 250K, then on heading 070°. Expect RADAR vectors to final approach course.

LANDING BWI RUNWAY 28: From ANTHM on track 104° to cross JABRR at 11000 and at 250K, then on track 104° to cross OLBAY at or below 9000 and at 250K, then on track 120° to cross CRABZ between 5000 and 6000, then on track 160° to cross FINNZ at 5000 and at 210K, then on track 143° to cross ASHOR at 4000, then on track 106° to cross GRAMZ at 4000, then on track 106°. Expect RADAR vectors to final approach course.

LANDING BWI RUNWAY 33L/R: From ANTHM on track 104° to cross JABRR at 11000 and at 250K, then on track 104° to cross OLBAY at or below 9000 and at 250K, then on track 120° to cross CRABZ between 5000 and 6000, then on track 160° to cross FINNZ at 5000 and at 210K, then on track 205° to cross KEEYY at 4000 and at 210K, then on track 204° to cross ROAPS at 4000, then on track 155° to cross HOOOK at 4000, then on track 155°. Expect RADAR vectors to final approach course.

LANDING MTN: From BUBBI on track 101° to cross SHEPH at or below 15000, then on track 101° to cross EAGLL between 12000 and 13000, then on track 102° to ANTHM, then on track 104° to cross JABRR at 11000 and at 250K, then on track 104° to cross OLBAY at or below 9000 and at 250K, then on track 120° to cross CRABZ between 5000 and 6000, then on track 160° to cross FINNZ at 5000 and at 210K, then on track 160° to cross RAAYY at 4000, then on track 160°. Expect RADAR vectors to final approach course.

NE-3, 16 APR 2026 to 14 MAY 2026

NE-3, 16 APR 2026 to 14 MAY 2026