

(CONLE5.CONLE) 24193

AL-804 (FAA)

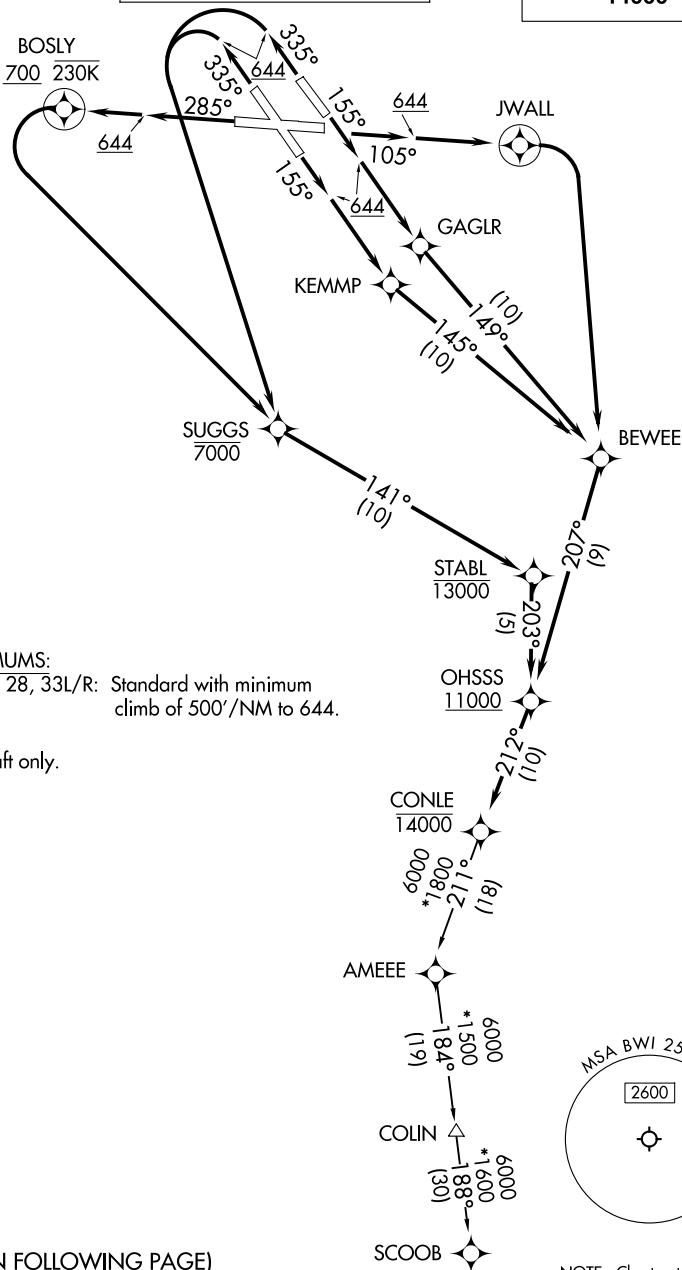
BALTIMORE/  
WASHINGTON INTL THURGOOD MARSHALL (BWI)  
BALTIMORE, MARYLAND

# CONLE FIVE DEPARTURE (RNAV)

POTOMAC DEP CON  
124.55 317.425  
D-ATIS  
115.1 127.8  
CLNC DEL  
118.05  
CPDLC  
GND CON  
121.9  
BALTIMORE TOWER  
119.4 257.8

RNAV 1-DME/DME/IRU or GPS.  
RADAR required.

**TOP ALTITUDE:  
14000**



### TAKEOFF MINIMUMS:

Rwys 10, 15L/R, 28, 33L/R: Standard with minimum climb of 500'/NM to 644.

NOTE: Jet aircraft only.

(CONTINUED ON FOLLOWING PAGE)

NOTE: Chart not to scale.

CONLE FIVE DEPARTURE (RNAV)  
(CONLE5.CONLE) 11 JUL 24

BALTIMORE/  
WASHINGTON INTL THURGOOD MARSHALL (BWI)  
BALTIMORE, MARYLAND

NE-3, 16 APR 2026 to 14 MAY 2026

NE-3, 16 APR 2026 to 14 MAY 2026

# CONLE FIVE DEPARTURE (RNAV)



## DEPARTURE ROUTE DESCRIPTION

TAKEOFF RUNWAY 10: Climb on heading 105° to 644, then direct JWALL, then right turn direct BEWEE, then on track 207° to cross OHSSS at or above 11000, thence....

TAKEOFF RUNWAY 15L: Climb on heading 155° to 644, then direct GAGLR, then on track 149° to BEWEE, then on track 207° to cross OHSSS at or above 11000, thence....

TAKEOFF RUNWAY 15R: Climb on heading 155° to 644, then direct KEMMP, then on track 145° to BEWEE, then on track 207° to cross OHSSS at or above 11000, thence....

TAKEOFF RUNWAY 28: Climb on heading 285° to 644, then direct BOSLY to cross at or above 700 and at or below 230K, then left turn direct SUGGS to cross at or below 7000, then on track 141° to cross STABL at or below 13000, then on track 203° to cross OHSSS at or above 11000, thence....

TAKEOFF RUNWAYS 33L/R: Climb on heading 335° to 644, then left turn direct SUGGS to cross at or below 7000, then on track 141° to cross STABL at or below 13000, then on track 203° to cross OHSSS at or above 11000, thence...

....on track 212° to cross CONLE at or below 14000, then on assigned transition. Maintain 14000. Expect clearance to filed altitude within 10 minutes after departure.

COLIN TRANSITION (CONLE5.COLIN)

SCOOB TRANSITION (CONLE5.SCOOB)

NE-3, 16 APR 2026 to 14 MAY 2026

NE-3, 16 APR 2026 to 14 MAY 2026