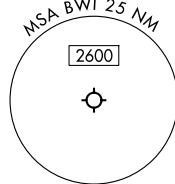


RNAV 1 - DME/DME/IRU or GPS.
RADAR required.

POTOMAC DEP CON
128.7 307.9
D-ATIS
115.1 127.8
CLNC DEL
118.05
CPDLC
GND CON
121.9
BALTIMORE TOWER
119.4 257.8



**TOP ALTITUDE:
16000**

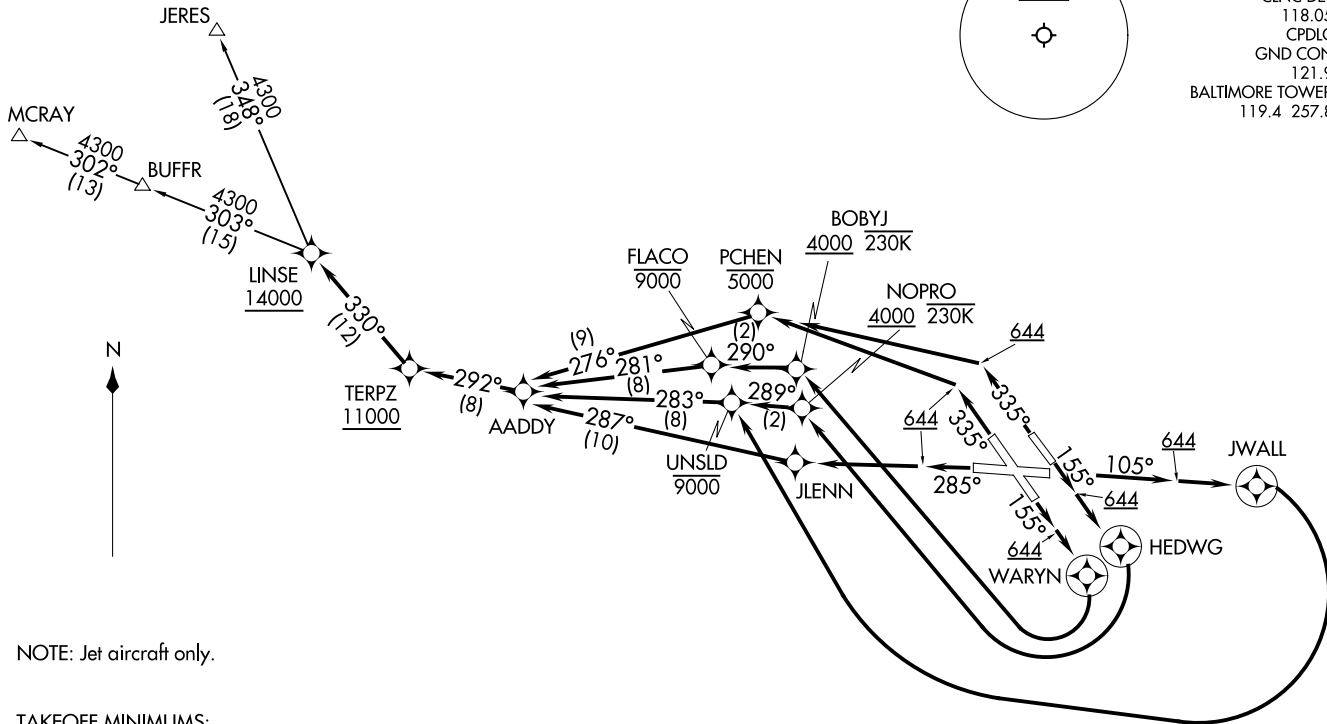
INSE TWO DEPARTURE (RNAV)
(INSE2, INSE) 20/FEB/25

BALTIMORE/
WASHINGTON INTL THURGOOD MARSHALL (BWI)

BALTIMORE/
WASHINGTON INTL THURGOOD MARSHALL (BWI)

INSE2, INSE) 25051
INSE TWO DEPARTURE (RNAV)

BALTIMORE/
WASHINGTON INTL THURGOOD MARSHALL (BWI)
AL-804 (FAA)
BALTIMORE, MARYLAND



NOTE: Jet aircraft only.

TAKEOFF MINIMUMS:

Rwy 15R: Standard with minimum climb of 780'/NM to 644.
Rwys 10, 15L, 28, 33L/R: Standard with minimum climb of 500'/NM to 644.

(CONTINUED ON FOLLOWING PAGE)

NOTE: Chart not to scale.

DEPARTURE ROUTE DESCRIPTION



TAKEOFF RUNWAY 10: Climb on heading 105° to 644, then direct JWALL, then right turn direct UNSLD at or below 9000, then on track 283° to AADDY, then on track 292° to cross TERPZ at or above 11000, thence....

TAKEOFF RUNWAY 15L: Climb on heading 155° to 644, then direct HEDWG, then right turn direct NOPRO at or above 4000 and at or below 230K, then on track 289° to cross UNSLD at or below 9000, then on track 283° to AADDY, then on track 292° to cross TERPZ at or above 11000, thence....

TAKEOFF RUNWAY 15R: Climb on heading 155° to 644, then direct WARYN, then right turn direct BOBYJ at or above 4000 at or below 230K, then on track 290° to cross FLACO at or below 9000, then on track 281° to AADDY, then on track 292° to cross TERPZ at or above 11000, thence....

TAKEOFF RUNWAY 28: Climb on heading 285° to 644, then direct JLENN, then on track 287° to AADDY, then on track 292° to cross TERPZ at or above 11000, thence....

TAKEOFF RUNWAYS 33L/R: Climb on heading 335° to 644, then left turn direct PCHEN at or below 5000, then on track 276° to AADDY, then on track 292° to cross TERPZ at or above 11000, thence....

...then on track 330° to cross LINSE at or above 14000. Then on assigned transition. Maintain 16000, expect filed altitude 10 minutes after departure.

ALL AIRCRAFT ATC CLIMB GRADIENT: If unable to accept climb rate advise ATC prior to taxi. Rwy 15R: 780'/NM until 644' MSL.

JERES TRANSITION (LINSE2.JERES)

MCRA Y TRANSITION (LINSE2.MCRA Y)

NE-3, 16 APR 2026 to 14 MAY 2026

NE-3, 16 APR 2026 to 14 MAY 2026