

WAAS CH 50144 W02A	APP CRS 018°	Rwy Ldg TDZE Apt Elev	4502 152 163
--	------------------------	-----------------------------	---

RNAV (GPS) RWY 2

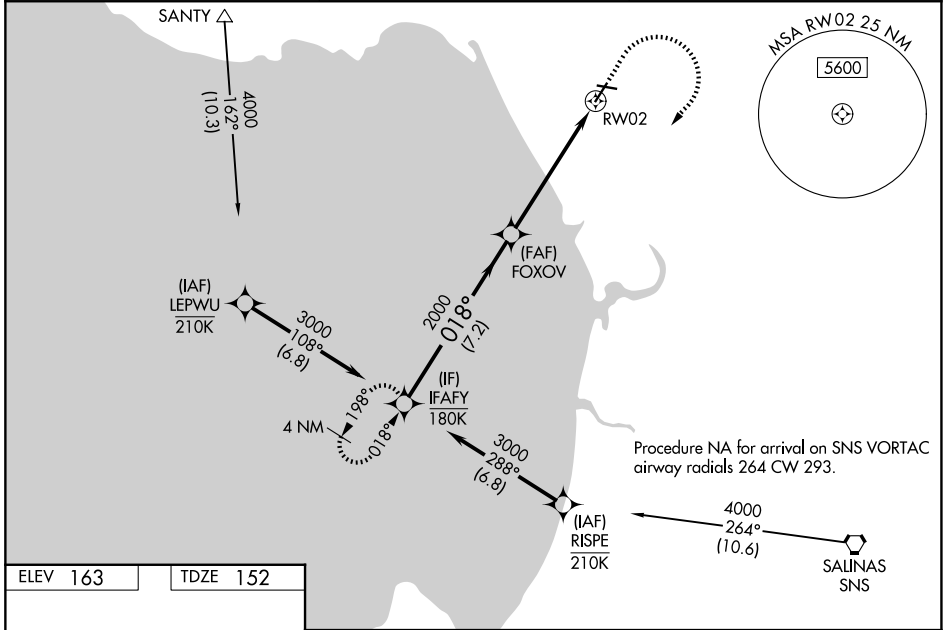
WATSONVILLE MUNI (WVI)

RNP APCH - GPS.

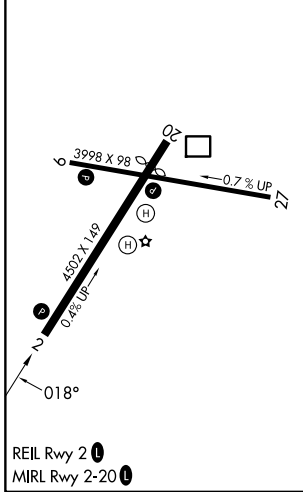
⚠ Rwy 2 helicopter visibility reduction below 3/4 SM NA. Circling Rwy 9, 27 NA at night. For uncompensated Baro-VNAV systems, LNAV/VNAV NA below 0°C or above 54°C. Circling NA west of Rwy 2-20. Baro-VNAV and VDP NA when using MRY altimeter setting. When local altimeter setting not received, use MRY altimeter setting and increase LPV DA to 464 feet, increase LNAV/VNAV DA to 742 feet, increase all MDAs 80 feet.

MISSED APPROACH: (Do not exceed 200K until IFAFY) Climb to 740 then climbing right turn to 3000 direct IFAFY and hold.

ASOS 132.275	NORCAL APP CON 127.15 307.125	UNICOM 122.8 (CTAF) 0
------------------------	---	---------------------------------



ELEV 163	TDZE 152
----------	----------



VGSI and RNAV glidepath not coincident (VGSI Angle 3.00/TCH 43).

IFAFY	740	3000	IFAFY	
3000	2000	2000		
GP 3.00°				
TCH 56				
	7.2 NM	4.1 NM	1.6 NM	
CATEGORY	A	B	C	D
LPV DA	402-3/4 250 (300-3/4)			
LNAV/VNAV DA	680-1 1/2 528 (600-1 1/2)			
LNAV MDA	680-1	528 (600-1)	680-1 1/2	528 (600-1 1/2)
CIRCLING	680-1	517 (600-1)	680-1 1/2	1180-3
			517 (600-1 1/2)	1017 (1100-3)

SW-2, 16 APR 2026 to 14 MAY 2026

SW-2, 16 APR 2026 to 14 MAY 2026