

WAAS CH <b>42520</b> <b>W23A</b>	APP CRS <b>229°</b>	Rwy Ldg TDZE Apt Elev	<b>6333</b> <b>1663</b> <b>1663</b>
--	------------------------	-----------------------------	---

# RNAV (GPS) RWY 23

ADIRONDACK RGNL (SLK)

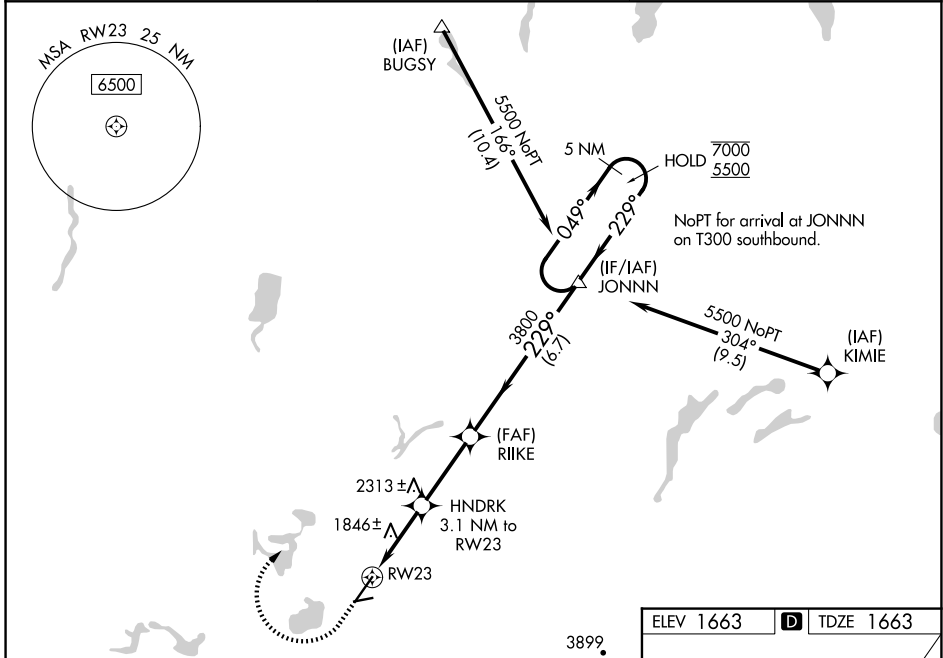
RNP APCH - GPS.

**⚠** Rwy 23 helicopter visibility reduction below 3/4 SM NA. For uncompensated Baro-VNAV systems, LNAV/VNAV NA below -29°C or above 54°C. When local altimeter setting not received, procedure NA. Circling Rwy 5, 9, 27 NA at night.  
**⚠** -32°C Inop table does not apply to LPV DA. For inop ALS, increase LNAV/VNAV all Cats visibility to 1 3/8 SM; increase LNAV Cat A/B visibility to 1 SM.



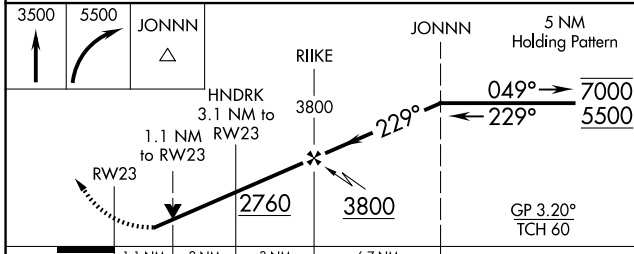
**MISSED APPROACH:**  
Climb to 3500 then climbing right turn to 5500 direct JONNN and hold.

ASOS <b>124.175</b>	BOSTON CENTER <b>120.35 342.25</b>	UNICOM <b>123.0 (CTAF) 0</b>
------------------------	---------------------------------------	---------------------------------

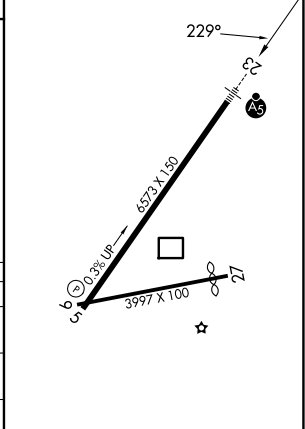


NE-2, 16 APR 2026 to 14 MAY 2026

NE-2, 16 APR 2026 to 14 MAY 2026



ELEV 1663	<b>D</b> TDZE 1663
-----------	--------------------



CATEGORY	A	B	C	D
LPV DA		1913-3/4	250 (300-3/4)	
LNAV/VNAV DA		2149-1	486 (500-1)	
LNAV MDA		2100-3/4	437 (500-3/4)	
CIRCLING	2500-1 1/4 837 (900-1 1/4)	2660-1 1/2 997 (1000-1 1/2)	2660-3 997 (1000-3)	2800-3 1137 (1200-3)

HIRL Rwy 5-23 **0**  
MIRL Rwy 9-27 **0**