

LOC I-GGG	APP CRS	Rwy Ldg	<b>9200</b>
<b>109.5</b>	<b>131°</b>	TDZE	<b>358</b>
		Apt Elev	<b>366</b>

# ILS or LOC RWY 13

EAST TEXAS RGNL (GGG)

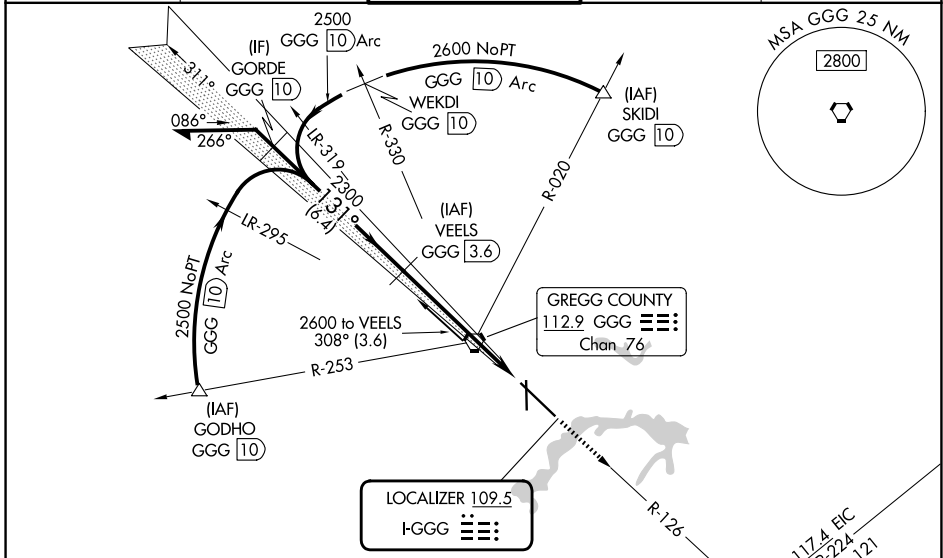
DME required.

▼ VDP NA when using JXI altimeter setting. For inop ALS, increase S-ILS 13 Cat E visibility to RVR 4000, S-LOC 13 Cat C/D/E visibility to 1 3/8 SM. When local altimeter setting not received, use JXI altimeter setting and increase S-ILS 13 DA to 617 feet; increase all MDAs 60 feet, and S-LOC 13 visibility Cat C/D to RVR 6000 and Circling visibility Cat C/D/E 1/4 SM. \*RVR 1800 authorized with use of FD or AP or HUD to DA (NA when using JXI altimeter setting).

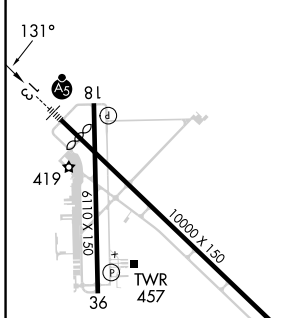
MALSR

MISSED APPROACH: Climb to 3000 on GGG VORTAC R-126 to ARGEN INT/GGG 1.4 DME and hold, continue climb-in-hold to 3000.

ATIS <b>119.65</b>	LONGVIEW APP CON* <b>124.675 257.975</b>	EASTEX TOWER* <b>119.2 (CTAF) 0377.05</b>	GND CON <b>121.6</b>	UNICOM <b>122.95</b>
-----------------------	---	--	-------------------------	-------------------------



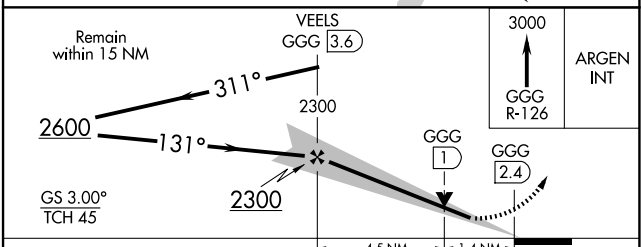
ELEV 366	D	TDZE 358
----------	---	----------



FAF to MAP 6 NM

Knots	60	90	120	150	180
Min:Sec	6:00	4:00	3:00	2:24	2:00

HIRL Rwy 13-31  
MIRL Rwy 18-36



CATEGORY	A	B	C	D	E
S-ILS 13*	558/24 200 (200-1/2)				
S-LOC 13	860/24	502 (500-1/2)	860/55	502 (500-1)	860/60 502 (500-1 1/4)
CIRCLING	860-1	494 (500-1)	980-1 3/4 614 (700-1 3/4)	1080-2 1/4 714 (800-2 1/4)	1080-2 1/2 714 (800-2 1/2)

SC-2, 16 APR 2026 to 14 MAY 2026

SC-2, 16 APR 2026 to 14 MAY 2026