

|  |                        |                             |   |
|--|------------------------|-----------------------------|---|
| WAAS<br>CH <b>61100</b><br><b>W13A</b> | APP CRS<br><b>131°</b> | Rwy Ldg<br>TDZE<br>Apt Elev | <b>9200</b><br><b>358</b><br><b>366</b> |
|--|------------------------|-----------------------------|---|

# RNAV (GPS) RWY 13

EAST TEXAS RGNL (GGG)

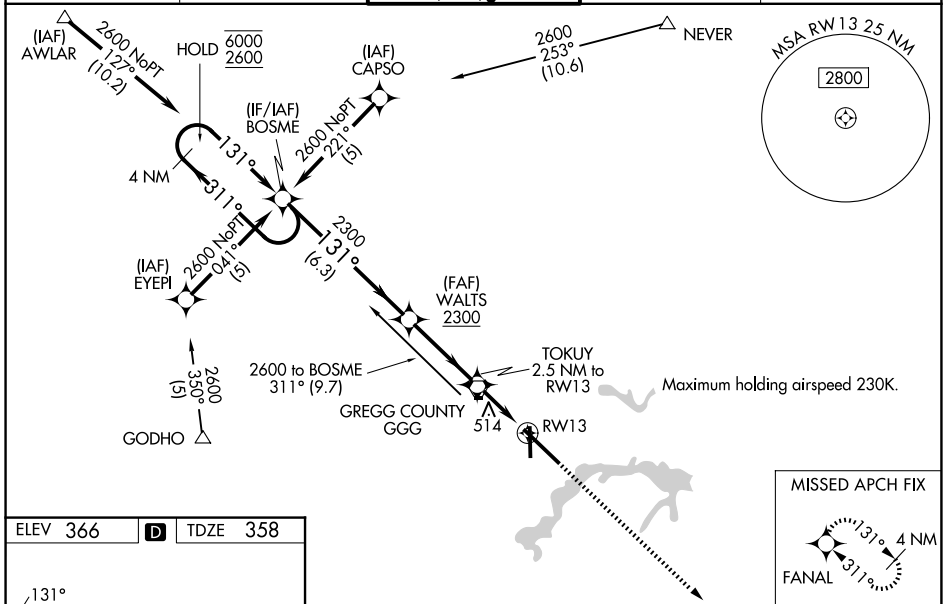
RNP APCH-GPS.

**⚠** Baro-VNAV and VDP NA when using Gilmer altimeter setting. For inop ALS, increase LPV Cat E visibility to RVR 4000, LNAV/VNAV all Cats visibility to RVR 5500, and LNAV Cat E visibility to 1 1/4 SM. When local altimeter setting not received use Gilmer altimeter setting and increase LPV DA to 671 feet; increase LNAV/VNAV DA to 785 feet; increase all MDA 60 feet, and LNAV visibility Cat C to RVR 5000, and Circling visibility Cats C/D/E 1/4 SM. For inop ALS when using Gilmer altimeter setting, increase LPV all Cats visibility to RVR 4500, LNAV/VNAV Cat E visibility to 1 1/4 SM, and LNAV Cats C/D/E visibility to 1 3/8 SM. For uncompensated Baro-VNAV systems, LNAV/VNAV NA below -15°C or above 54°C.

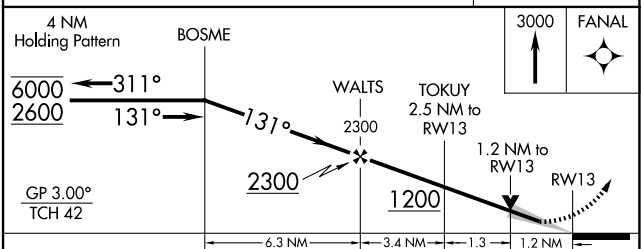
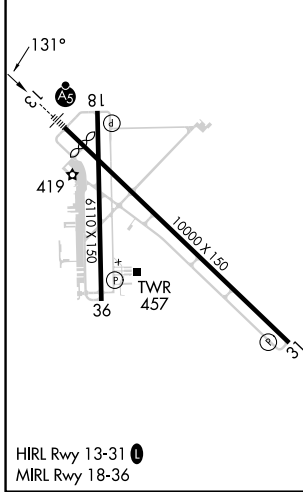


**MISSED APPROACH:**  
Climb to 3000 direct  
FANAL and hold.

|                       |   |   |                         |                         |
|-----------------------|---|---|-------------------------|-------------------------|
| ATIS<br><b>119.65</b> | LONGVIEW APP CON*<br><b>124.675 257.975</b> | EASTEX TOWER*<br><b>119.2 (CTAF) 377.05</b> | GND CON<br><b>121.6</b> | UNICOM<br><b>122.95</b> |
|-----------------------|---|---|-------------------------|-------------------------|



|          |          |          |
|----------|----------|----------|
| ELEV 366 | <b>D</b> | TDZE 358 |
|----------|----------|----------|



| CATEGORY     | A                    | B             | C                            | D                             | E                             |
|--------------|----------------------|---------------|------------------------------|-------------------------------|-------------------------------|
| LPV DA       | 612/24 254 (300-1/2) |               |                              |                               |                               |
| LNAV/VNAV DA | 726/40 368 (400-3/4) |               |                              |                               |                               |
| LNAV MDA     | 780/24               | 422 (500-1/2) | 780/40<br>422 (500-3/4)      | 780/50                        | 422 (500-1)                   |
| CIRCLING     | 860-1                | 494 (500-1)   | 980-1 3/4<br>614 (700-1 3/4) | 1080-2 1/4<br>714 (800-2 1/4) | 1080-2 1/2<br>714 (800-2 1/2) |

SC-2, 16 APR 2026 to 14 MAY 2026

SC-2, 16 APR 2026 to 14 MAY 2026