

WAAS CH 53504 W31A	APP CRS 311°	Rwy Ldg TDZE Apt Elev	9200 354 366
--	------------------------	-----------------------------	---

RNAV (GPS) RWY 31

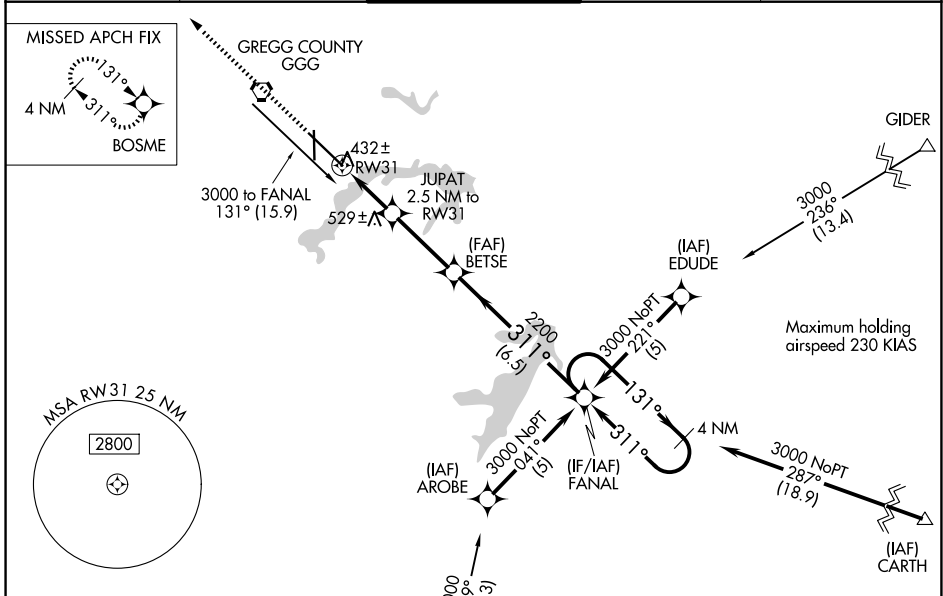
EAST TEXAS RGNL (GGG)

RNP APCH - GPS.

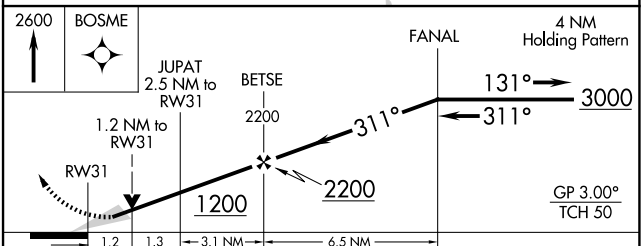
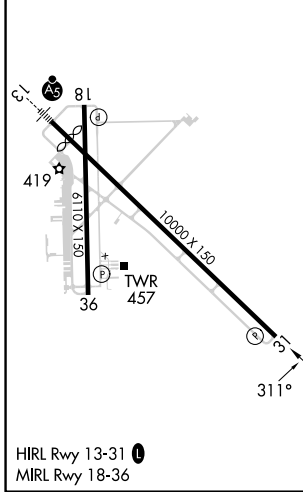
⚠ Baro-VNAV and VDP NA when using Gilmer altimeter setting. For uncompensated Baro-VNAV systems, LNAV/VNAV NA below -15°C or above 54°C. When local altimeter setting not received, use Gilmer altimeter setting and increase all DA 59 feet, all MDA 60 feet. Increase LPV visibility all Cats ¼ SM and Circling visibility Cats C/D/E ¼ SM.

MISSED APPROACH:
Climb to 2600 direct BOSME and hold.

ATIS 119.65	LONGVIEW APP CON* 124.675 257.975	EASTEX TOWER* 119.2 (CTAF) 0377.05	GND CON 121.6	UNICOM 122.95
-----------------------	---	--	-------------------------	-------------------------



ELEV 366	D	TDZE 354
----------	----------	----------



CATEGORY	A	B	C	D	E
LPV DA		604-¾		250 (300-¾)	
LNAV/VNAV DA		682-1¼		328 (400-1¼)	
LNAV MDA	800-1	446 (500-1)	800-1¾ 446 (500-1¾)	800-1½	446 (500-1½)
CIRCLING	860-1	494 (500-1)	980-1¾ 614 (700-1¾)	1080-2¼ 714 (800-2¼)	1080-2½ 714 (800-2½)

SC-2, 16 APR 2026 to 14 MAY 2026

SC-2, 16 APR 2026 to 14 MAY 2026