

VORTAC GGG <b>112.9</b> Chan 76	APP CRS <b>125°</b>	Rwy Ldg TDZE Apt Elev	<b>9200</b> <b>358</b> <b>366</b>
---------------------------------------	------------------------	-----------------------------	---

# VOR/DME or TACAN RWY 13

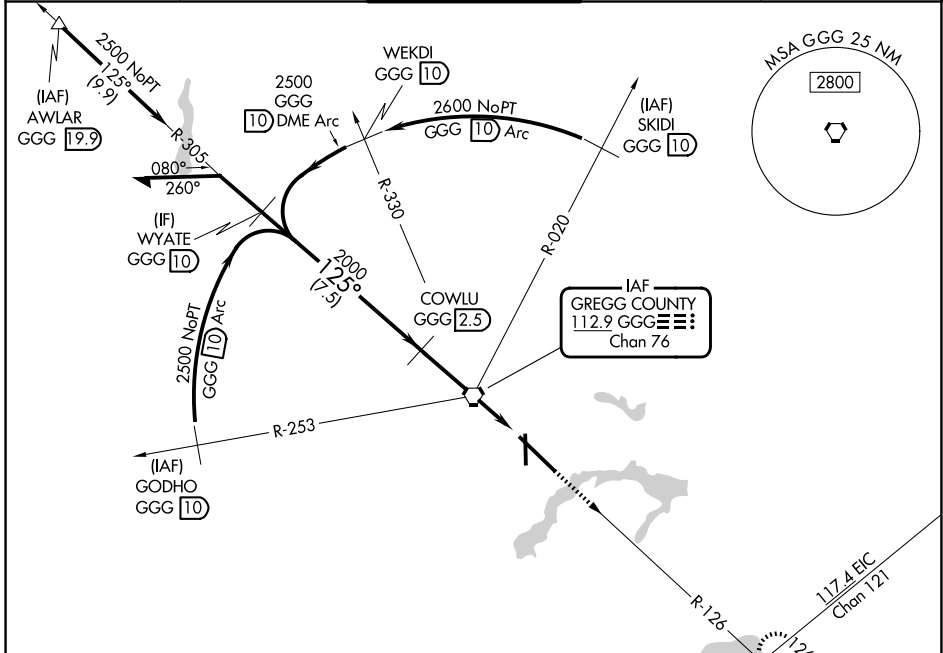
EAST TEXAS RGNL (GGG)

**⚠** For inop ALS, increase S-13 Cat C/D/E visibility to 1 $\frac{1}{2}$  SM. When local altimeter setting not received use Gilmer altimeter setting and increase all MDA 60 feet, S-13 and Circling Cats C/D/E visibility  $\frac{1}{2}$  SM. VDP NA when using Gilmer altimeter setting. For inop ALS when using Gilmer altimeter setting increase S-13 Cat C/D/E visibility to 1 $\frac{1}{2}$  SM.

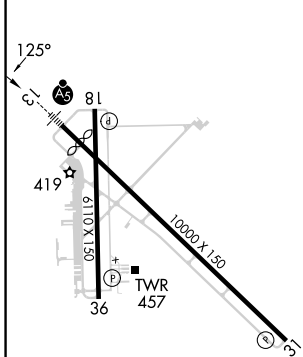


**MISSED APPROACH:**  
Climb to 3000 via GGG R-126 to ARGEN Int/GGG 14 DME and hold.

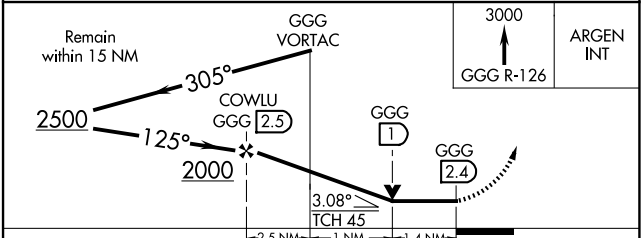
ATIS <b>119.65</b>	LONGVIEW APP CON* <b>124.675 257.975</b>	EASTEX TOWER* <b>119.2 (CTAF) 377.05</b>	GND CON <b>121.6</b>	UNICOM <b>122.95</b>
-----------------------	---	---	-------------------------	-------------------------



ELEV 366	<b>D</b>	TDZE 358
----------	----------	----------



HIRL Rwy 13-31	MIRL Rwy 18-36
----------------	----------------



CATEGORY	A	B	C	D	E
S-13	860/24 502 (500- $\frac{1}{2}$ )		860/55 502 (500-1)		860/55 502 (500-1)
CIRCLING	860-1 494 (500-1)		980-1 $\frac{3}{4}$ 614 (700-1 $\frac{3}{4}$ )	1080-2 $\frac{1}{4}$ 714 (600-2 $\frac{1}{4}$ )	1080-2 $\frac{1}{2}$ 714 (800-2 $\frac{1}{2}$ )

SC-2, 16 APR 2026 to 14 MAY 2026

SC-2, 16 APR 2026 to 14 MAY 2026