

VORTAC GGG <b>112.9</b> Chan <b>76</b>	APP CRS <b>306°</b>	Rwy Ldg TDZE Apt Elev	<b>9200</b> <b>354</b> <b>366</b>
--	------------------------	-----------------------------	---

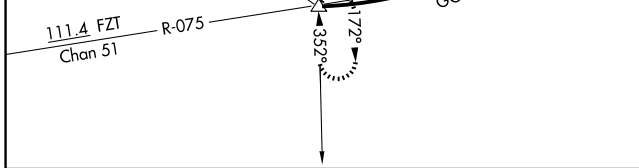
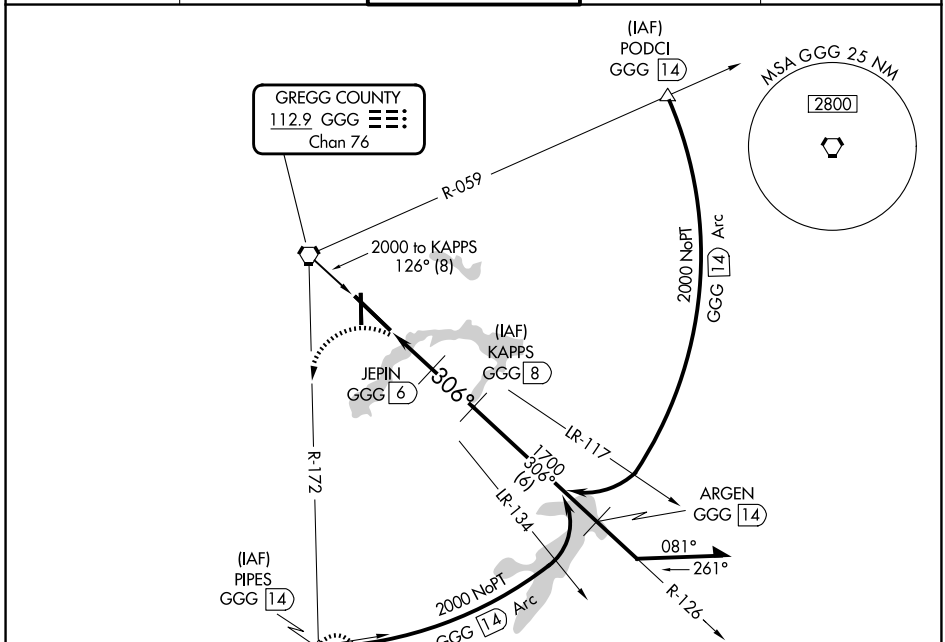
# VOR/DME or TACAN RWY 31

EAST TEXAS RGNL (GGG)

**⚠** When local altimeter setting not received, use Gilmer altimeter setting and increase all MDA 60 feet and increase S-31 Cats C/D/E and Circling Cats C/D/E visibility ½ SM. VDP NA when using Gilmer altimeter setting.

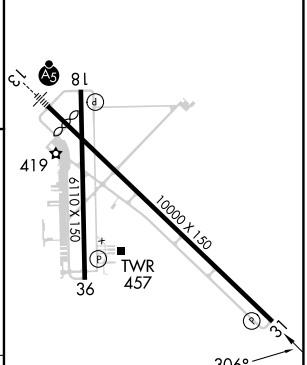
**⚠** MISSED APPROACH: Climb to 800, then climbing left turn to 2500 via GGG R-172 to PIPES INT and hold.

ATIS <b>119.65</b>	LONGVIEW APP CON* <b>124.675 257.975</b>	EASTEX TOWER* <b>119.2 (CTAF) 377.05</b>	GND CON <b>121.6</b>	UNICOM <b>122.95</b>
-----------------------	---	---	-------------------------	-------------------------



800	2500	PIPES △	KAPPS GGG [8]	Remain within 15 NM
GGG R-172			≤ 2.97° TCH 52	
*1120 when using Gilmer altimeter setting.				
GGG [3.9]	GGG [5]	JEPIN GGG [6]	ARGEN GGG [14]	2000
1.1		1	2	6

ELEV 366	<b>D</b>	TDZE 354
----------	----------	----------



CATEGORY	A	B	C	D	E
S-31	780-1	426 (500-1)	780-1¼	426 (500-1¼)	
CIRCLING	860-1	494 (500-1)	980-1¾ 614 (700-1¾)	1080-2¼ 714 (800-2¼)	1080-2½ 714 (800-2½)

HIRL Rwy 13-31 **⓪**  
MIRL Rwy 18-36