

WAAS CH 49125 W22A	APP CRS 215°	Rwy Idg TDZE Apt Elev	5658 2355 2380
--	------------------------	-----------------------------	---

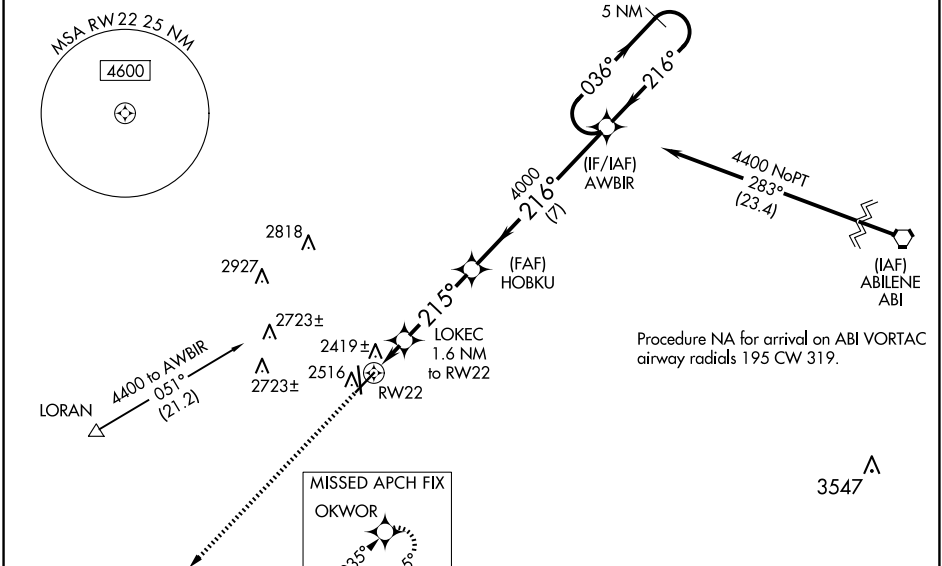
RNAV (GPS) RWY 22

AVENGER FLD (SWW)

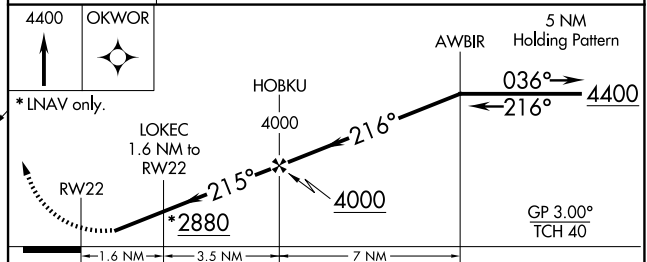
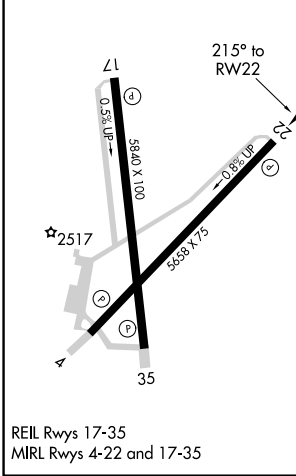
⚠ When VGSI inop, Circling Rwy 17 and 22 NA at night. Baro-VNAV NA when using Snyder altimeter setting. For uncompensated Baro-VNAV systems, LNAV/VNAV NA below -19°C (-2°F) or above 29°C (84°F). When VGSI inop, Straight in/Circling Rwy 22 procedure NA at night. DME/DME RNP-0.3 NA. Visibility reduction by helicopters NA. When local altimeter setting not received, use Snyder altimeter setting and increase LPV and LNAV/VNAV DA to 2677 feet, increase all MDAs 80 feet; increase LPV and LNAV/VNAV visibility all Cats 1/8 SM, LNAV visibility Cats C and D and Circling Cat C and D visibility 1/4 SM.

MISSED APPROACH:
Climb to 4400 direct OKWOR and hold.

AWOS-3 119.025	ABILENE APP CON 127.2 282.3	UNICOM 122.8 (CTAF)
--------------------------	---------------------------------------	-------------------------------



ELEV 2380	TDZE 2355
-----------	-----------



CATEGORY	A	B	C	D
LPV DA		2605-1	250 (300-1)	
LNAV/VNAV DA		2605-1	250 (300-1)	
LNAV MDA		2680-1	325 (300-1)	
CIRCLING	2880-1	500 (500-1)	3080-2 700 (700-2)	3080-2 1/4 700 (700-2 1/4)

SC-2, 16 APR 2026 to 14 MAY 2026

SC-2, 16 APR 2026 to 14 MAY 2026