

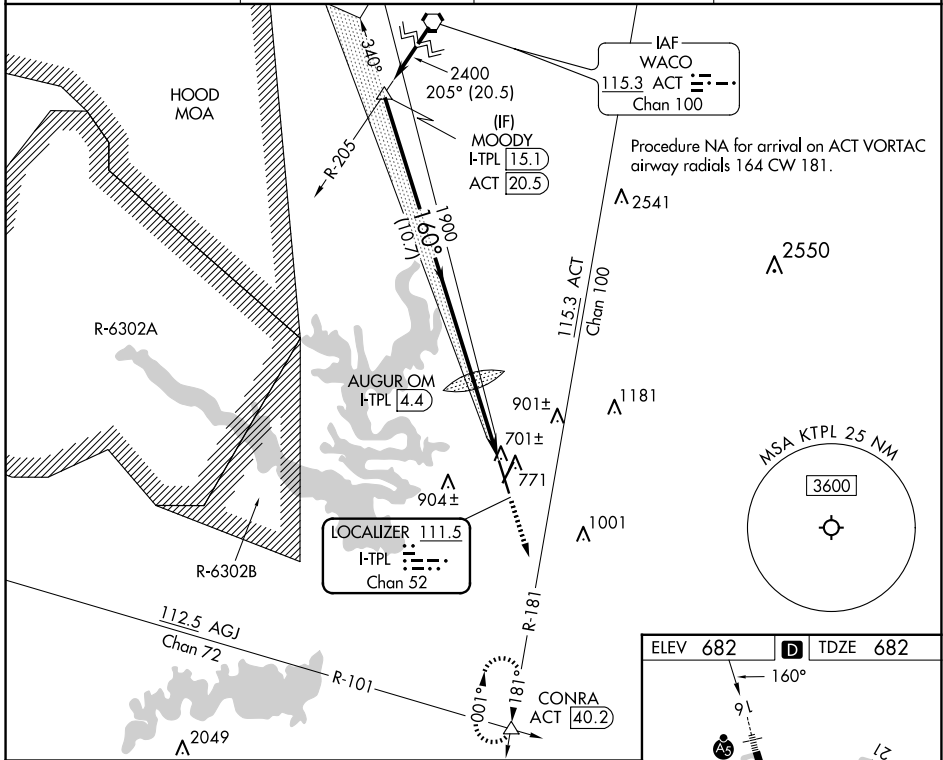
LOC/DME I-TPL <b>111.5</b> Chan <b>52</b>	APP CRS <b>160°</b>	Rwy Idg <b>7000</b> TDZE <b>682</b> Apt Elev <b>682</b>
---	------------------------	---

# ILS or LOC RWY 16

## DRAUGHON-MILLER CENTRAL TEXAS RGNL (T'PL)

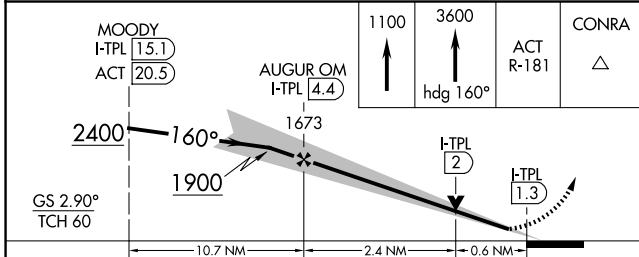
<p><b>⚠</b> NA Autopilot coupled approach NA below 990. For inop ALS, increase S-LOC 16 Cats C/D visibility to 1 SM.</p>	<p><b>MALSR</b> </p>	<p><b>MISSED APPROACH:</b> Climb to 1100 then continue climb to 3600 on heading 160° and on ACT VORTAC R-181 to CONRA INT/ACT 40.2 DME and hold, continue climb-in-hold to 3600.</p>
--	--------------------------	--

AWOS-3PT <b>134.975</b>	GRAY APP CON <b>120.075 370.0</b>	CINC DEL <b>125.9</b>	UNICOM <b>123.0 (CTAF)</b>
----------------------------	--------------------------------------	--------------------------	-------------------------------

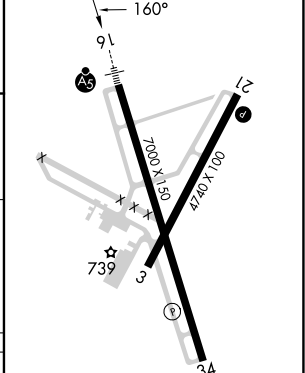


SC-3, 16 APR 2026 to 14 MAY 2026

SC-3, 16 APR 2026 to 14 MAY 2026



ELEV 682	<b>D</b> TDZE 682
----------	-------------------



CATEGORY	A	B	C	D
S-ILS 16		882-½	200 (200-½)	
S-LOC 16		980-½	298 (300-½)	
<b>C</b> CIRCLING	1120-1 438 (500-1)	1180-1 498 (500-1)	1280-1½ 598 (600-1½)	1420-2¼ 738 (800-2¼)

MIRL Rwy 3-21	
MIRL Rwy 16-34	<b>D</b>
FAF to MAP 3 NM	
Knots	60 90 120 150 180
Min:Sec	3:00 2:00 1:30 1:12 1:00