

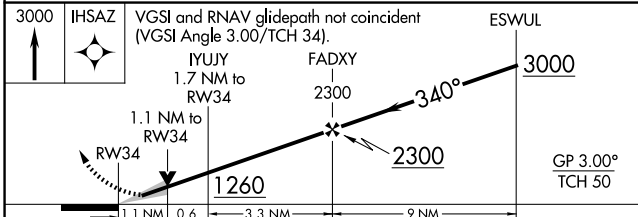
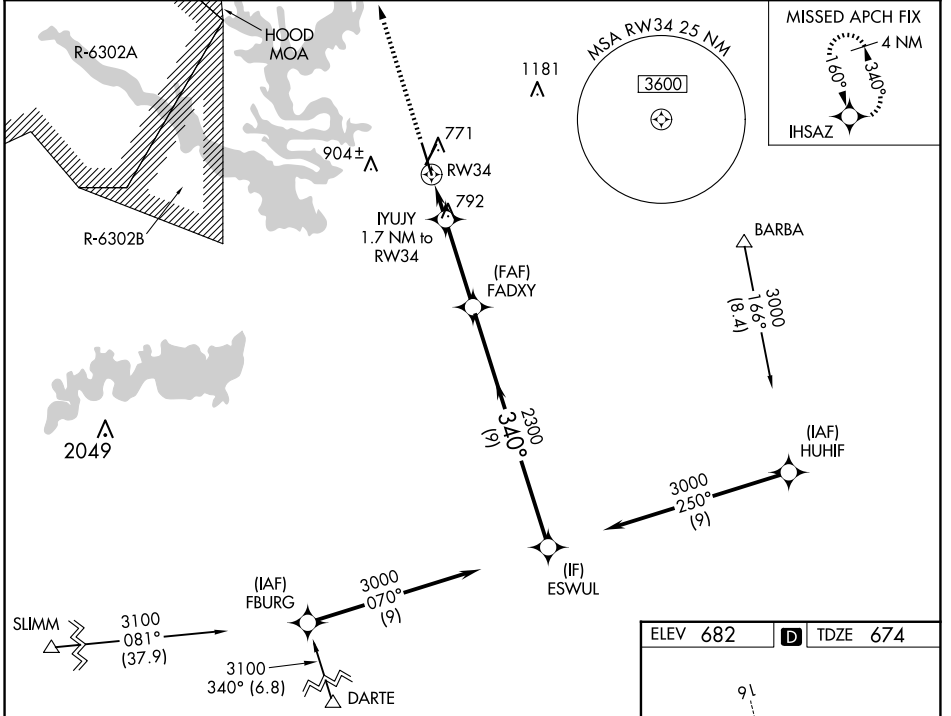
WAAS CH 82401 W34A	APP CRS 340°	Rwy Idg TDZE Apt Elev	7000 674 682
--	------------------------	-----------------------------	---

RNAV (GPS) RWY 34

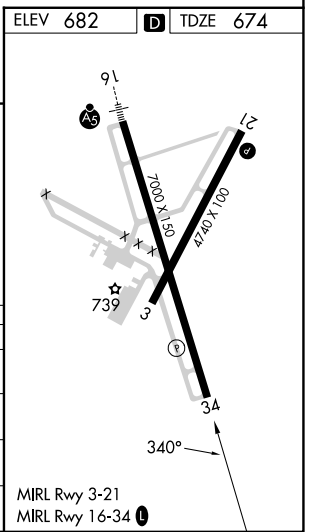
DRAUGHON-MILLER CENTRAL TEXAS RGNL (TPL)

RNP APCH.	MISSED APPROACH: Climb to 3000 direct ILSAZ and hold.
<p>▼ For uncompensated Baro-VNAV systems, LNAV/VNAV NA below -16°C or above 54°C .</p>	

AWOS-3PT 134.975	GRAY APP CON 120.075 370.0	CLNC DEL 125.9	UNICOM 123.0 (CTAF) U
----------------------------	--------------------------------------	--------------------------	--



CATEGORY	A	B	C	D
LPV DA		874- ³ / ₄	200 (200- ³ / ₄)	
LNAV/VNAV DA		924- ³ / ₄	250 (300- ³ / ₄)	
LNAV MDA	1060-1	386 (400-1)	1060-1 ¹ / ₈	386 (400-1 ¹ / ₈)
C CIRCLING	1140-1 458 (500-1)	1200-1 518 (600-1)	1280-1 ¹ / ₂ 598 (600-1 ¹ / ₂)	1420-2 ¹ / ₄ 738 (800-2 ¹ / ₄)



SC-3, 16 APR 2026 to 14 MAY 2026

SC-3, 16 APR 2026 to 14 MAY 2026