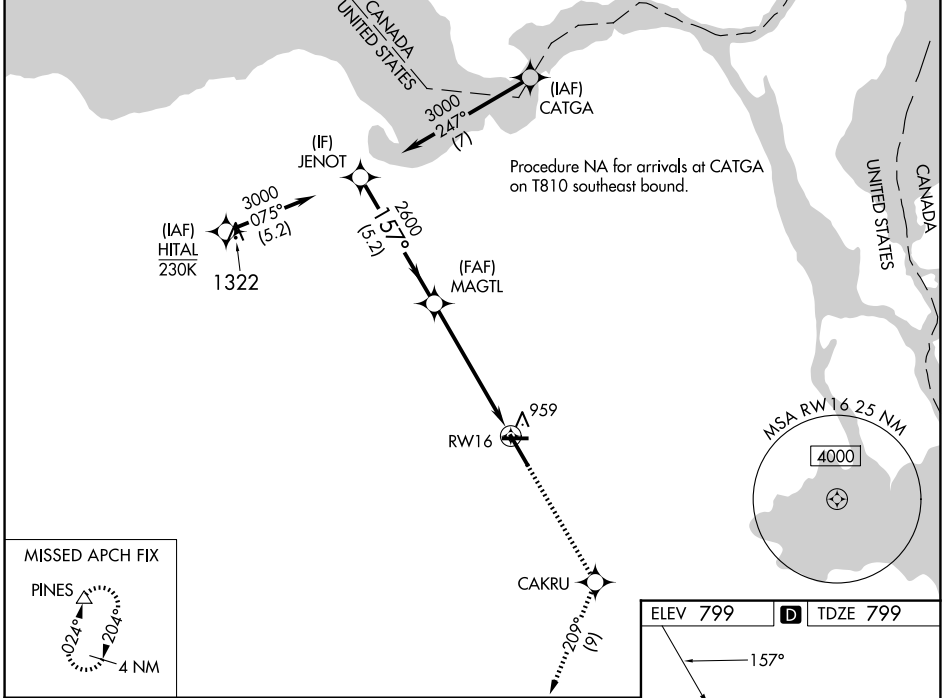


WAAS CH 69215 W16A	APP CRS 157°	Rwy Idg 7203 TDZE 799 Aprt Elev 799
--	------------------------	--

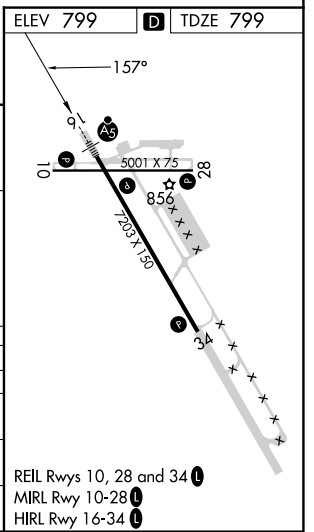
RNAV (GPS) RWY 16

CHIPPEWA COUNTY INTL (CIU)

RNP APCH - GPS.		MALSR	MISSED APPROACH: Climb to 3000 direct CAKRU and on track 209° to PINES and hold.
For uncompensated Baro-VNAV systems, LNAV/VNAV NA below -16°C or above 54°C. For inop ALS, increase LNAV/VNAV all Cats visibility to 1 SM.			
AWOS-3PT 127.575	TORONTO CENTER 132.65 344.5	UNICOM 123.0 (CTAF)	



MISSED APCH FIX		PINES	
JENOT 3000 157° GP 3.00° TCH 58		MAGTL 2600 1.1 NM to RWY 16 RWY 16	
5.2 NM		4.3 NM	
1.1 NM			
CATEGORY	A	B	C
LPV DA	999-1/2		200 (200-1/2)
LNAV/VNAV DA	1140-5/8		341 (400-5/8)
LNAV MDA	1220-1/2 421 (500-1/2)		1220-3/4 421 (500-3/4)
CIRCLING	1260-1 461 (500-1)		1260-1 1/2 461 (500-1/2) 1360-2 561 (600-2)



EC-1, 16 APR 2026 to 14 MAY 2026

EC-1, 16 APR 2026 to 14 MAY 2026