

LOC/DME I-HRL	APP CRS	Rwy Ldg	9400
111.5	178°	TDZE	35
Chan 52		Apt Elev	36

ILS or LOC RWY 18R

VALLEY INTL (H.R.L.)

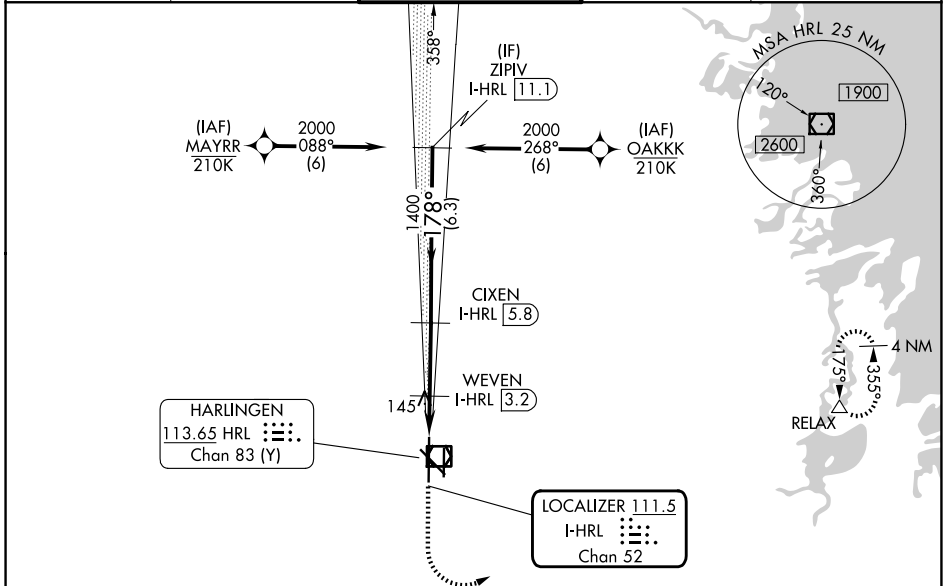
RNP APCH - GPS.

⚠ When local altimeter setting not received, use Port Isabel altimeter setting: increase S-ILS 18R DA to 277 feet; increase all MDAs 60 feet and S-LOC 18R visibility Cat C/D to RVR 4000 and Circling Cat C/D ¼ SM. For inop ALS when using Port Isabel altimeter setting, increase S-LOC 18R visibility Cat C/D to RVR 5500. VDP NA when using Port Isabel altimeter setting.
 *RVR 1800 authorized with use of FD or AP or HUD to DA. (NA when using secondary altimeter setting).

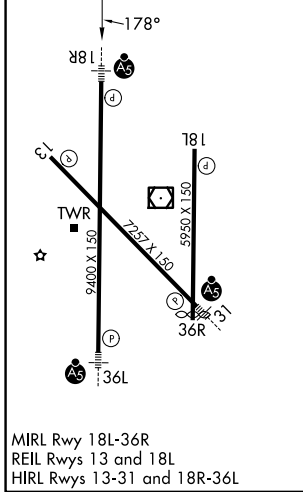
MALSRL

MISSED APPROACH:
 Climb to 500 then climbing left turn to 2000 direct RELAX and hold.

ATIS 124.85	VALLEY APP CON 120.7 279.5	HARLINGEN TOWER ★ 119.3 (CTAF) 0 317.6	GND CON 121.7	UNICOM 122.95
-----------------------	--------------------------------------	--------------------------------------------------	-------------------------	-------------------------



ELEV 36	D	TDZE 35
----------------	----------	----------------



	500	2000	RELAX	VGSI and ILS glidepath not coincident (VGSI Angle 3.00/TCH 71)					
	<table border="1"> <tr> <td>0.9 NM</td> <td>0.6 NM</td> <td>2.6 NM</td> <td>6.3 NM</td> <td></td> </tr> </table>				0.9 NM	0.6 NM	2.6 NM	6.3 NM	
0.9 NM	0.6 NM	2.6 NM	6.3 NM						
CATEGORY	A		B						
S-ILS 18R*	235/24 200 (200-½)								
S-LOC 18R	400/24 365 (400-½)		400/35 365 (400-¾)						
CIRCLING	460-1 424 (500-1)		560-1 524 (600-1)						
	600-1½ 564 (700-1½)		680-2 644 (700-2)						

HARLINGEN, TEXAS
 Amdt 1 11JUL24

26°14'N-97°39'W

VALLEY INTL (H.R.L.) ILS or LOC RWY 18R

SC-3, 16 APR 2026 to 14 MAY 2026

SC-3, 16 APR 2026 to 14 MAY 2026