


RNAV (RNP) Z RWY 18R VALLEY INTL (H.R.L.)

APP CRS 178°	Rwy Ldg 9400
	TDZE 35
	Apt Elev 36

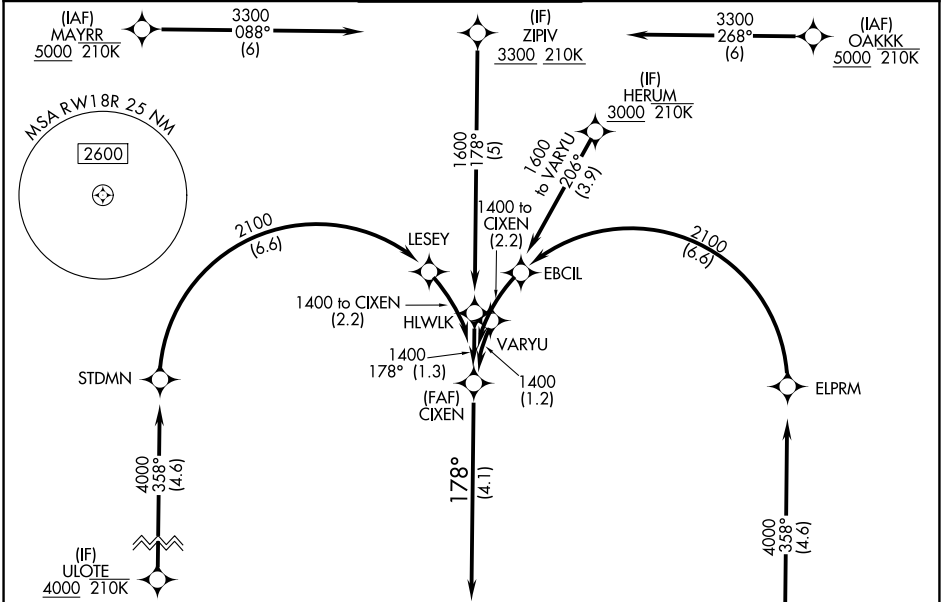
RNP AR APCH - GPS.

⚠ For uncompensated Baro-VNAV systems, procedure NA below -1°C or above 54°C. When local altimeter setting not received, procedure NA. For inop ALS, increase RNP 0.11 all Cats visibility to RVR 4000 and RNP 0.30 all Cats visibility to RVR 4500.

MALSR 

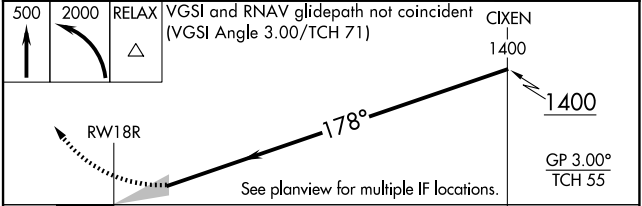
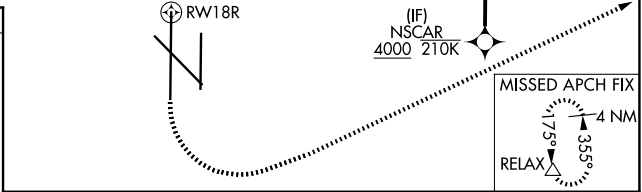
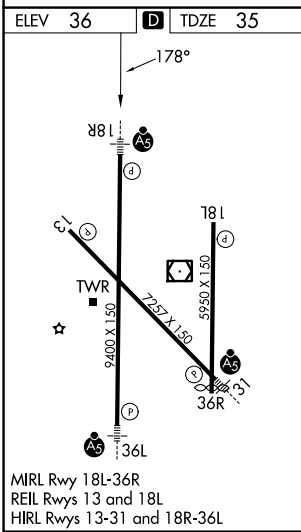
MISSED APPROACH: Climb to 500 then climbing left turn to 2000 direct RELAX and hold.

ATIS 124.85	VALLEY APP CON 120.7 279.5	HARLINGEN TOWER* 119.3 (CTAF) 0 317.6	GND CON 121.7	UNICOM 122.95
-----------------------	--------------------------------------	-------------------------------------------------	-------------------------	-------------------------



SC-3, 16 APR 2026 to 14 MAY 2026

SC-3, 16 APR 2026 to 14 MAY 2026



CATEGORY	A	B	C	D
RNP 0.11 DA		285/24	250 (300-½)	
RNP 0.30 DA		345/24	310 (400-½)	

AUTHORIZATION REQUIRED