

WAAS CH <b>82530</b> <b>W31A</b>	APP CRS <b>313°</b>	Rwy Ldg <b>7257</b> TDZE <b>36</b> Apt Elev <b>36</b>
--	------------------------	---

# RNAV (GPS) Y RWY 31

VALLEY INTL (HRL)

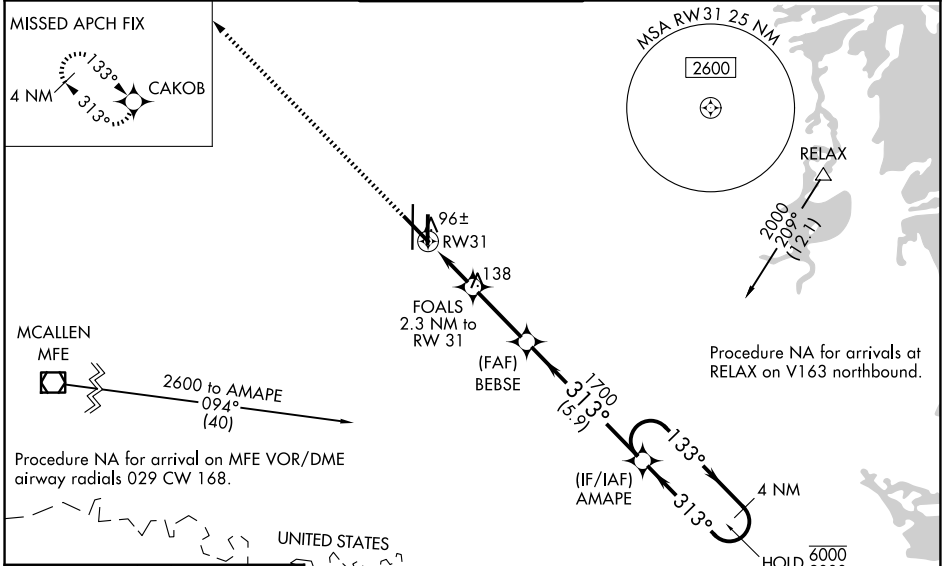
RNP APCH - GPS.

▼ For uncompensated Baro-VNAV systems, LNAV/VNAV NA below -1°C or above 54°C.  
 ▲ Baro-VNAV and VDP NA when using Port Isabel altimeter setting. For inop ALS, increase LNAV/VNAV all Cats visibilities to ¾ SM. For inop ALS when using Port Isabel altimeter setting, increase LNAV/VNAV all Cats visibilities to 7/8 SM. When local altimeter setting not received, use Port Isabel altimeter setting; increase LPV DA to 278 feet; increase LNAV/VNAV DA to 328 feet; increase all MDAs 60 feet and LNAV visibility Cats C and D ½ SM and Circling visibility Cat C and D ¼ SM.

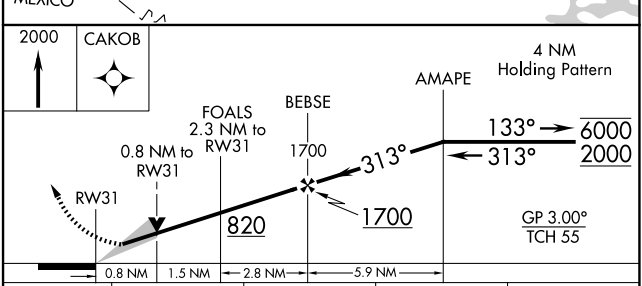
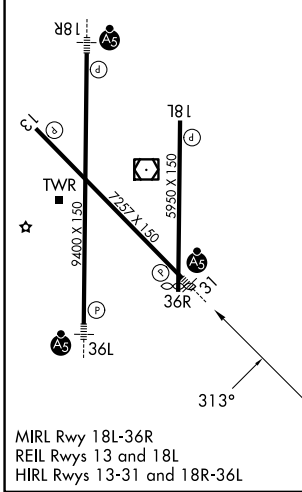


MISSED APPROACH:  
Climb to 2000 direct  
CAKOB and hold.

ATIS <b>124.85</b>	VALLEY APP CON <b>120.7 279.5</b>	HARLINGEN TOWER ★ <b>119.3 (CTAF) 317.6</b>	GND CON <b>121.7</b>	UNICOM <b>122.95</b>
-----------------------	--------------------------------------	--	-------------------------	-------------------------



ELEV <b>36</b>	<b>D</b>	TDZE <b>36</b>
----------------	----------	----------------



CATEGORY	A	B	C	D
LPV DA		236-½	200 (200-½)	
LNAV/VNAV DA		286-½	250 (300-½)	
LNAV MDA		360-½	324 (400-½)	
CIRCLING	460-1	560-1	600-1½	680-2
	424 (500-1)	524 (600-1)	564 (600-1½)	644 (700-2)

SC-3, 16 APR 2026 to 14 MAY 2026

SC-3, 16 APR 2026 to 14 MAY 2026