

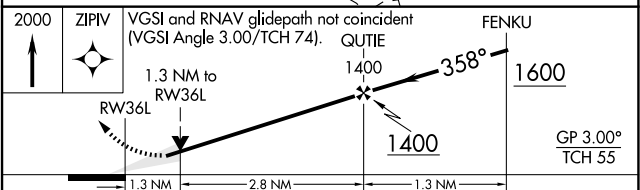
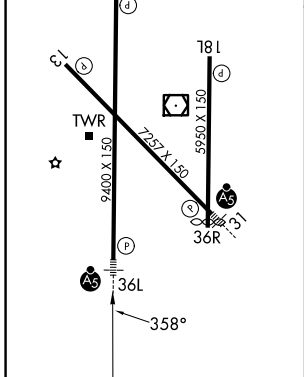
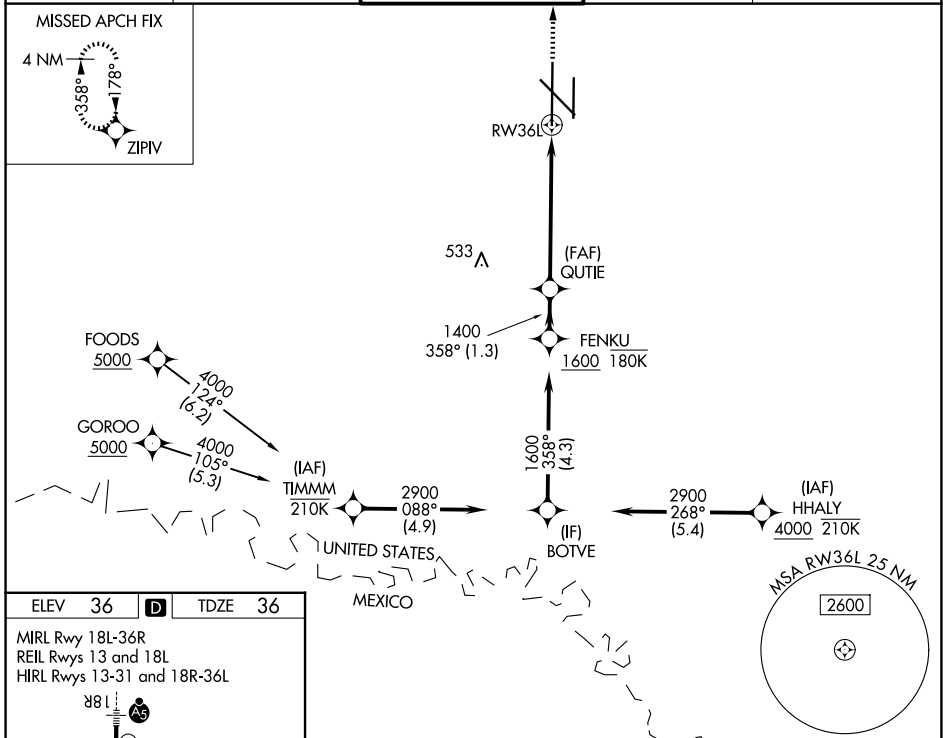
WAAS CH 86530 W36B	APP CRS 358°	Rwy Ldg TDZE 36 Apt Elev 36	9400
--	------------------------	---	-------------

RNAV (GPS) Y RWY 36L

VALLEY INTL (H.R.L.)

RNP APCH - GPS.	MALS R	MISSED APPROACH: Climb to 2000 direct ZIPIV and hold.
<p>▽ For uncompensated Baro-VNAV systems, LNAV/VNAV NA below -1°C or above 54°C. ▲ Baro-VNAV and VDP NA when using Port Isabel altimeter setting. When local altimeter setting not received, use Port Isabel altimeter setting and increase LPV DA to 278 feet; increase LNAV/VNAV DA to 447 feet and all visibilities 1/8 SM. Increase all MDAs 60 feet, and LNAV visibility Cat C and D 1/2 SM; and Circling visibility Cats C and D 1/4 SM.</p>		

ATIS 124.85	VALLEY APP CON 120.7 279.5	HARLINGEN TOWER ★ 119.3(CTAF) 317.6	GND CON 121.7	UNICOM 122.95
-----------------------	--------------------------------------	---	-------------------------	-------------------------



CATEGORY	A	B	C	D
LPV DA		236-3/4	200 (200-3/4)	
LNAV/VNAV DA		405-1	369 (400-1)	
LNAV MDA	500-1	464 (500-1)	500-1 3/8	464 (500-1 3/8)
CIRCLING	500-1 464 (500-1)	560-1 524 (600-1)	600-1 1/2 564 (600-1 1/2)	680-2 644 (700-2)

SC-3, 16 APR 2026 to 14 MAY 2026

SC-3, 16 APR 2026 to 14 MAY 2026