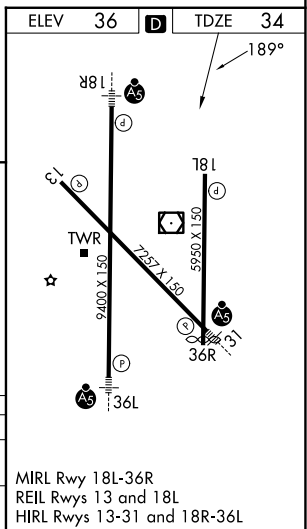
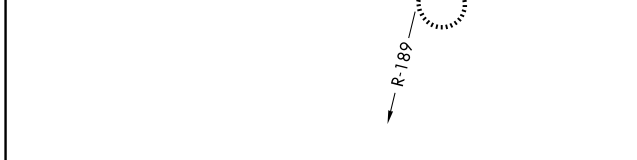
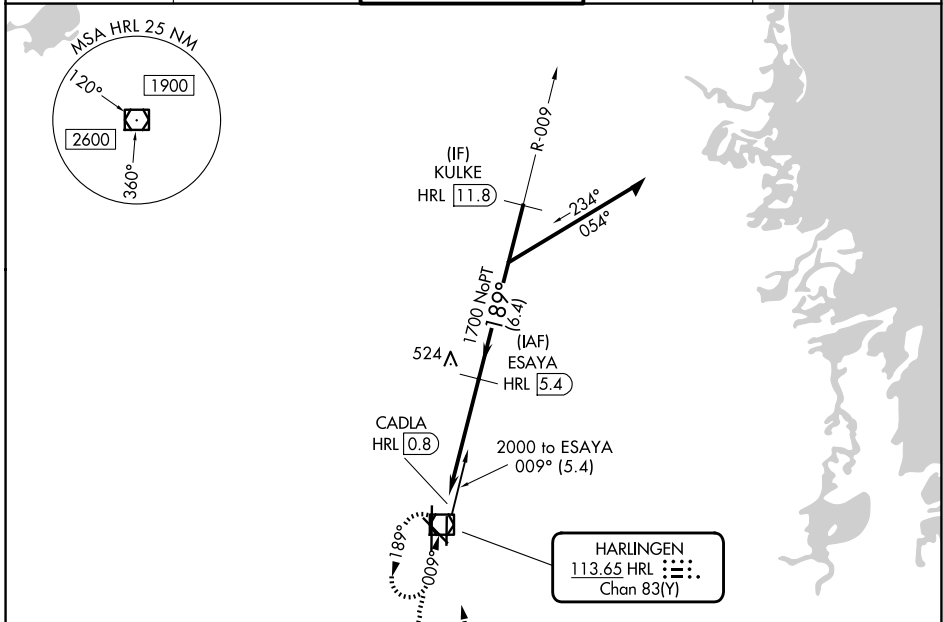


VOR/DME HRL 113.65 Chan 83 (Y)	APP CRS 189°	Rwy Ldg 5949 TDZE 34 Apt Elev 36
----------------------------------------------------	------------------------	-------------------------------------------------------------

VOR RWY 18L

VALLEY INTL (HRL)

DME required. RADAR required for procedure entry at KULKE.		MISSED APPROACH: Climb to 2100 then left turn direct HRL VOR/DME and hold.	
ATIS 124.85	VALLEY APP CON 120.7 279.5	HARLINGEN TOWER ★ 119.3 (CTAF) 0 317.6	GND CON 121.7
		UNICOM 122.95	



CATEGORY	A	B	C	D
S-18L	480-1	446 (500-1)	480-1 $\frac{3}{8}$	446 (500-1 $\frac{3}{8}$)
CIRCLING	480-1 444 (500-1)	560-1 524 (600-1)	600-1 $\frac{1}{2}$ 564 (600-1 $\frac{1}{2}$)	680-2 644 (700-2)

2100	HRL	ESAYA HRL 5.4	Remain within 10 NM
1700	189°	1700	009°
1.2 NM	3.8 NM		

SC-3, 16 APR 2026 to 14 MAY 2026

SC-3, 16 APR 2026 to 14 MAY 2026