

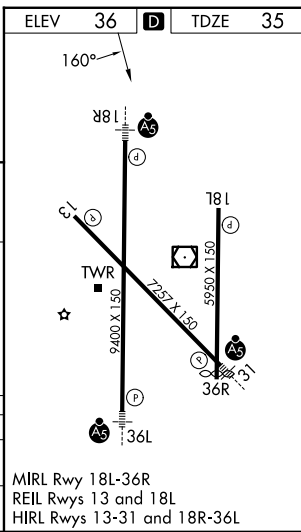
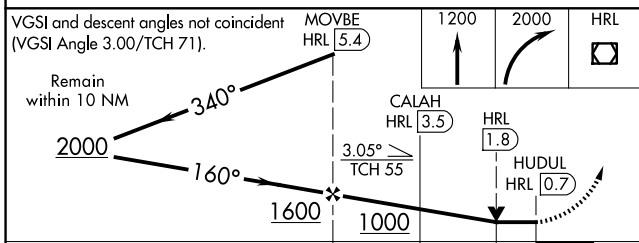
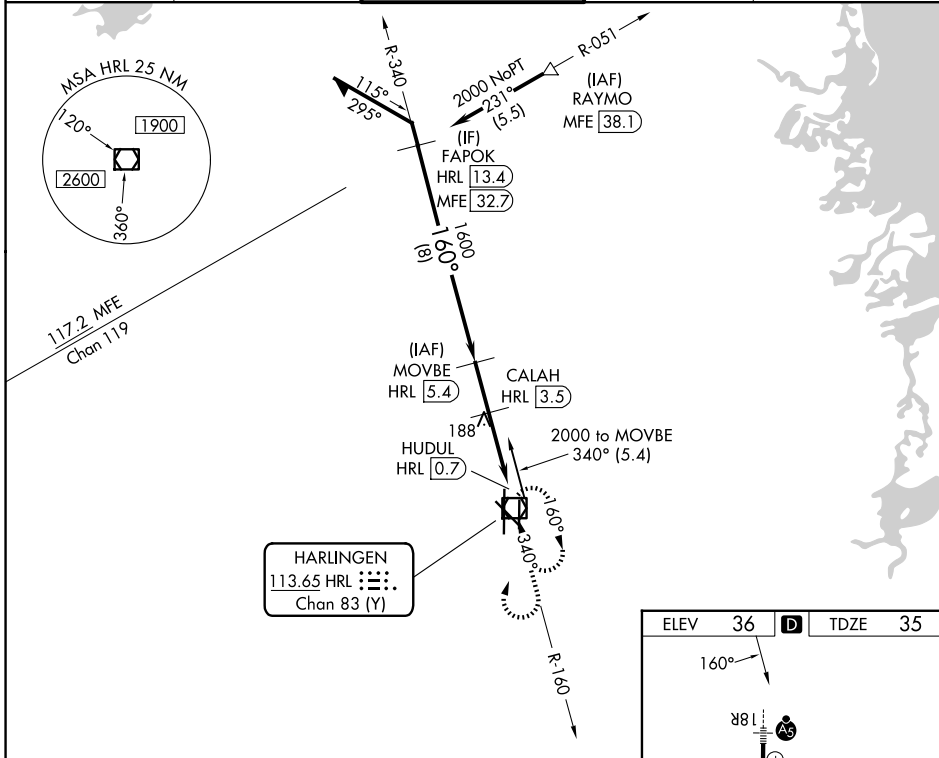
VOR/DME HRL 113.65 Chan 83 (Y)	APP CRS 160°	Rwy Ldg TDZE Apt Elev	9400 35 36
--	------------------------	-----------------------------	---------------------------------------

VOR RWY 18R

VALLEY INTL (H.R.L.)

DME required. ▼ For inop ALS, increase S-18R Cat C/D visibility to 1½ SM. When local altimeter setting not received, use Port Isabel altimeter setting and increase all MDAs 60 feet and S-18R visibility Cat C/D to RVR 5500 and Circling visibility Cat C/D ¼ SM. VDP NA when using Port Isabel altimeter setting.		MALSR 	MISSED APPROACH: Climb to 1200 then climbing right turn to 2000 direct HRL VOR/DME and hold, continue to climb in hold to 2000.
---	--	-----------	---

ATIS 124.85	VALLEY APP CON 120.7 279.5	HARLINGEN TOWER ★ 119.3 (CTAF) 317.6	GND CON 121.7	UNICOM 122.95
-----------------------	--------------------------------------	--	-------------------------	-------------------------



CATEGORY	A	B	C	D
S-18R	440/24	405 (500-½)	440/40	405 (500-¾)
CIRCLING	460-1 424 (500-1)	560-1 524 (600-1)	600-1½ 564 (600-½)	680-2 644 (700-2)

SC-3, 16 APR 2026 to 14 MAY 2026

SC-3, 16 APR 2026 to 14 MAY 2026