

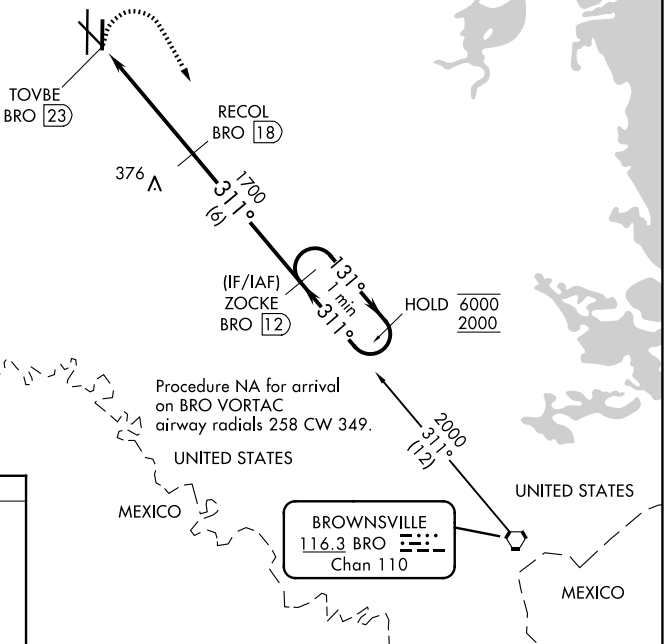
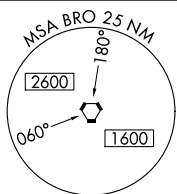
VORTAC BRO <b>116.3</b> Chan <b>110</b>	APP CRS <b>311°</b>	Rwy Ldg TDZE Apt Elev	<b>7257</b> <b>36</b> <b>36</b>
---	------------------------	-----------------------------	---------------------------------------

# VOR Y or TACAN RWY 31

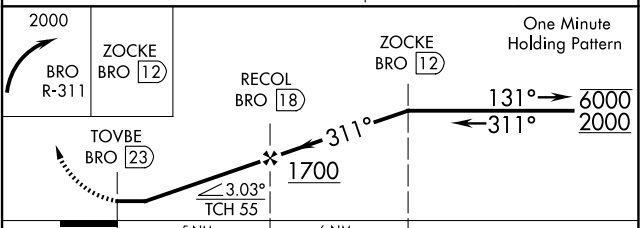
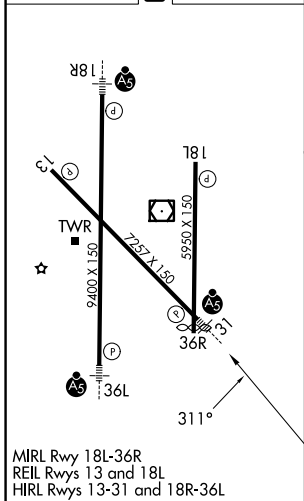
VALLEY INTL (HRL)

DME required.	MALSR	MISSED APPROACH: Climbing right turn to 2000 on BRO R-311 to ZOCKE/12 DME and hold.
▼ When local altimeter setting not received, use Port Isabel altimeter setting and increase all MDAs 60 feet.		

ATIS <b>124.85</b>	VALLEY APP CON <b>120.7 279.5</b>	HARLINGEN TOWER ★ <b>119.3 (CTAF) 317.6</b>	GND CON <b>121.7</b>	UNICOM <b>122.95</b>
-----------------------	--------------------------------------	--	-------------------------	-------------------------



ELEV 36	<b>D</b>	TDZE 36
---------	----------	---------



CATEGORY	A	B	C	D
S-31	1000-3/4 964 (1000-3/4)	1000-1 964 (1000-1)	1000-2 1/2 964 (1000-2 1/2)	
CIRCLING	1000-1 1/4 964 (1000-1 1/4)	1000-1 1/2 964 (1000-1 1/2)	1000-3 964 (1000-3)	