

WAAS CH <b>82735</b> <b>W22A</b>	APP CRS <b>218°</b>	Rwy Ldg TDZE Apt Elev	<b>8000</b> <b>3649</b> <b>3661</b>
--	------------------------	-----------------------------	---

# RNAV (GPS) RWY 22

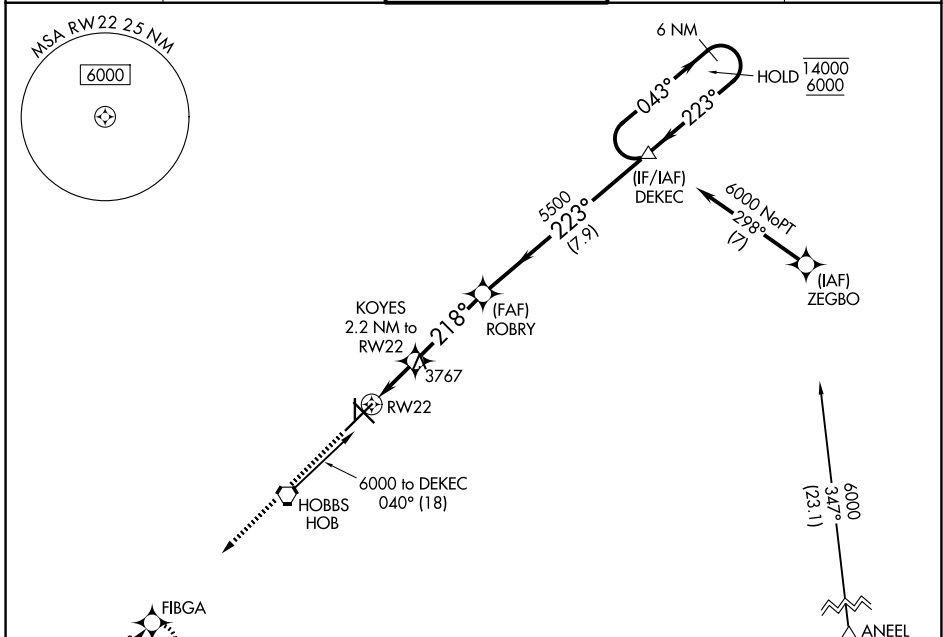
LEA COUNTY RGNL (HOB)

RNP APCH - GPS.

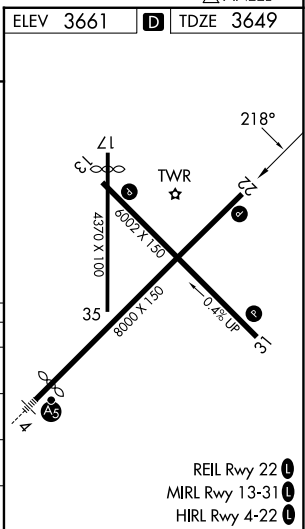
**⚠** Circling Rwy 17, 35 NA at night. For uncompensated Baro-VNAV systems, LNAV/VNAV NA below -12°C or above 54°C.

MISSED APPROACH: Climb to 5600 direct FIBGA and hold.

ATIS <b>119.75</b>	FORT WORTH CENTER <b>133.1 298.95</b>	HOBBS TOWER ★ <b>120.65 (CTAF) 317.4</b>	GND CON <b>121.9</b>	UNICOM <b>122.95</b>
-----------------------	--	---	-------------------------	-------------------------



ELEV 3661	<b>D</b> TDZE 3649
5600 FIBGA	ROBY DEKEC
↑	6 NM Holding Pattern
KOYES 2.2 NM to RWY 22	5500
1 NM to RWY 22	043° → 14000
RWY 22	← 223° 6000
GP 3.00°	
TCH 44	
1 NM 1.2 NM 3.5 NM 7.9 NM	
CATEGORY	A B C D
LPV DA	3899-3/4 250 (300-3/4)
LNAV/VNAV DA	3899-3/4 250 (300-3/4)
LNAV MDA	4020-1 371 (400-1)
CIRCLING	4120-1 459 (500-1) 4160-1 499 (500-1) 4440-2 1/4 779 (800-2 1/4) 4440-2 1/2 779 (800-2 1/2)



- REIL Rwy 22
- MIRL Rwy 13-31
- HIRL Rwy 4-22

SW-1, 16 APR 2026 to 14 MAY 2026

SW-1, 16 APR 2026 to 14 MAY 2026