

| | | | |
|--|------------------------|---|-------------|
| WAAS CH 86720 W13B | APP CRS 132° | Rwy Ldg TDZE 151 Apt Elev 151 | 5098 |
|--|------------------------|---|-------------|

RNAV (GPS) Y RWY 13

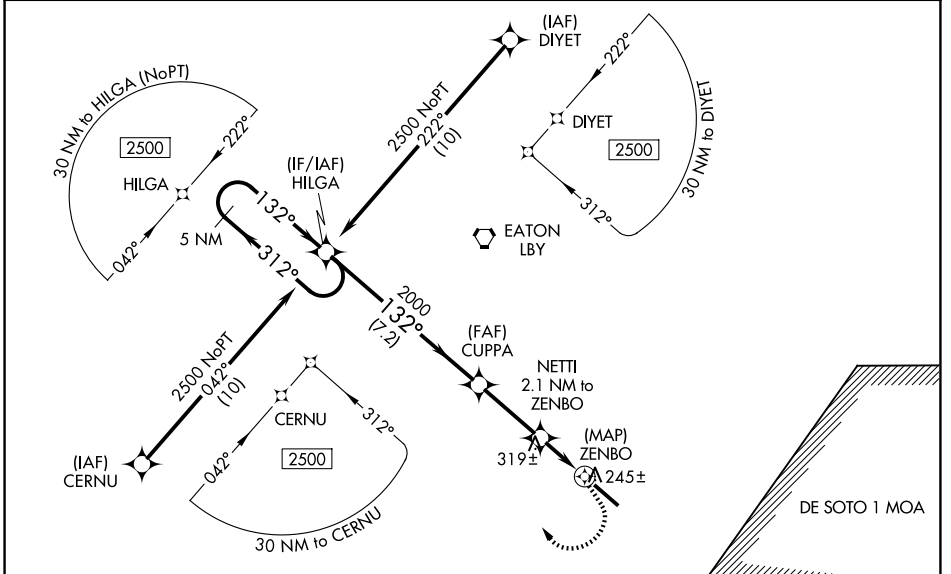
HATTIESBURG BOBBY L CHAIN MUNI (HBG)

RNP APCH - GPS.

▼ For uncompensated Baro-VNAV systems, LNAV/VNAV NA below -15°C or above 43°C.
 ▲ When local altimeter setting not received, use PIB altimeter setting and increase LPV DA to 493 feet and all visibilities ½ SM. Increase LNAV/VNAV DA to 576 feet and all visibilities ¼ SM. Increase all MDAs 60 feet and LNAV visibility Cat C/D ½ SM, and Circling visibility Cat C ¼ SM. Baro-VNAV and VDP NA when using PIB altimeter setting.

MISSED APPROACH: Climbing right turn to 2500 direct HILGA and hold.

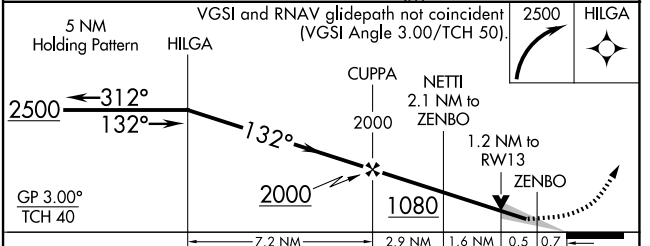
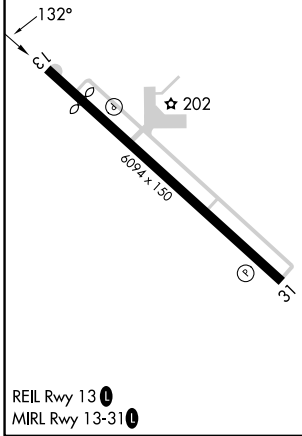
| | | |
|------------------------|--------------------------------------|---------------------------------|
| ASOS 135.425 | HOUSTON CENTER 126.8 327.8 | UNICOM 122.8 (CTAF) 0 |
|------------------------|--------------------------------------|---------------------------------|



| | |
|----------|----------|
| ELEV 151 | TDZE 151 |
|----------|----------|

Uncontrolled helicopter and military airlift aircraft in vicinity of Hagler AAF and Shelby Auxiliary 1 Airfield.

HAGLER AAF
SHELBY AUXILIARY 1 AIRFIELD
R4401 A-B



| CATEGORY | A | B | C | D |
|--------------|----------------------|----------------------|----------------------|------------------------|
| LPV DA | | 442-1 | 291 (300-1) | |
| LNAV/VNAV DA | | 525-1 | 374 (400-1) | |
| LNAV MDA | 580-1 | 429 (500-1) | 580-1¼ | 429 (500-1¼) |
| CIRCLING | 680-1 529 (600-1) | 720-1 569 (600-1) | 860-2 709 (800-2) | 900-2½ 749 (800-2½) |

SC-4, 16 APR 2026 to 14 MAY 2026

SC-4, 16 APR 2026 to 14 MAY 2026