

VORTAC ELW 108.6 Chan 23	APP CRS 039°	Rwy Idg 6002 TDZE 759 Apt Elev 782
---------------------------------------	------------------------	---

VOR RWY 5

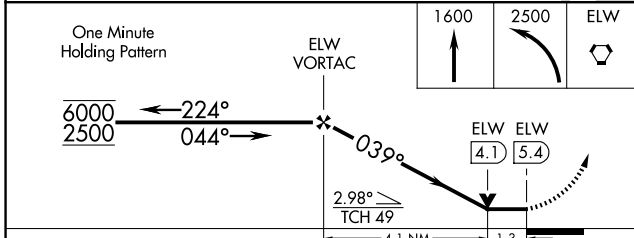
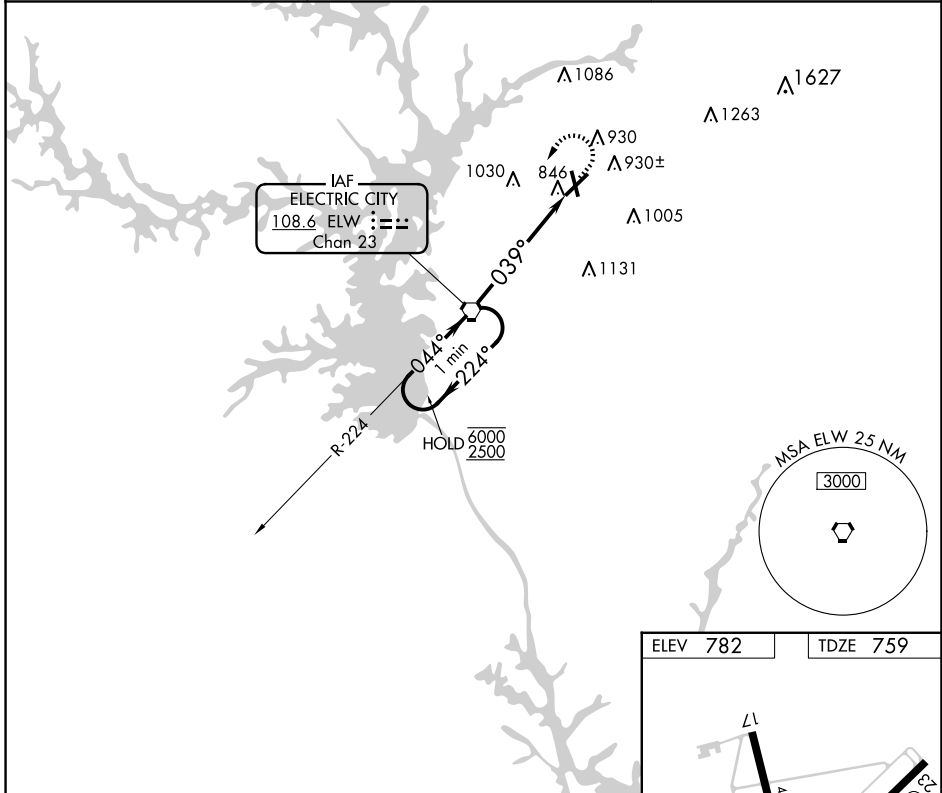
ANDERSON RGNL (A.ND)

▼ Rwy 17, 35 helicopter visibility reduction below 1 SM NA. When local altimeter setting not received, use CEU altimeter setting and increase all MDAs 60 feet and S-5 visibility Cat C/D 1/8 SM, and Circling visibility Cat C/D 1/4 SM. VDP NA when using CEU altimeter setting. Circling Rwy 17, 35 NA at night.

⚠ MISSED APPROACH: Climb to 1600 then climbing left turn to 2500 direct ELW VORTAC and hold.



ASOS 120.675	GREER APP CON ★ 118.8 270.275	CTAF 123.6 0
------------------------	---	------------------------



ELEV 782	TDZE 759
----------	----------

FAF to MAP 5.4 NM												
<table border="1"> <tr> <td>Knots</td> <td>60</td> <td>90</td> <td>120</td> <td>150</td> <td>180</td> </tr> <tr> <td>Min:Seq</td> <td>5:24</td> <td>3:36</td> <td>2:42</td> <td>2:10</td> <td>1:48</td> </tr> </table>	Knots	60	90	120	150	180	Min:Seq	5:24	3:36	2:42	2:10	1:48
Knots	60	90	120	150	180							
Min:Seq	5:24	3:36	2:42	2:10	1:48							

SE-2, 16 APR 2026 to 14 MAY 2026

SE-2, 16 APR 2026 to 14 MAY 2026