

LOC/DME I-DVR <b>111.9</b> Chan <b>56</b>	APP CRS <b>187°</b>	Rwy Ldg <b>5200</b> TDZE <b>573</b> Apt Elev <b>603</b>
---	------------------------	---

# ILS or LOC RWY 18

LEBANON MUNI (L.E.B)

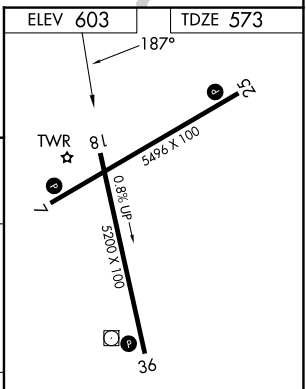
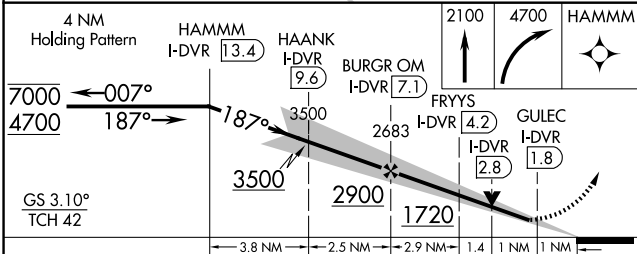
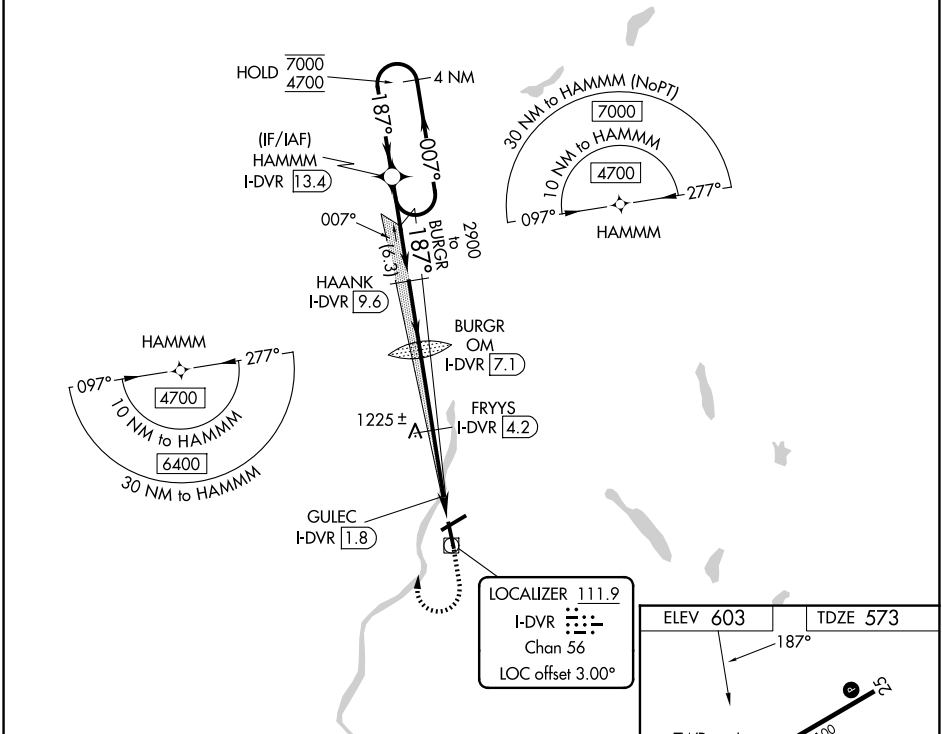
RNP APCH - GPS.

Autopilot coupled approach NA below 750.  
Circling NA south of Rwy 7-25.

-19°C  
Circling Rwy 7 NA at night.

MISSED APPROACH: Climb to 2100 then climbing right turn to 4700 direct HAMMM and hold, continue climb-in-hold to 4700.

ATIS <b>118.65</b>	BOSTON CENTER <b>134.7 269.475</b>	LEBANON TOWER ★ <b>125.95 (CTAF) 235.775</b>	GND CON <b>121.6</b>	UNICOM <b>122.95</b>
-----------------------	---------------------------------------	---	-------------------------	-------------------------



CATEGORY	A	B	C	D
S-ILS 18		915-1	342 (400-1)	
S-LOC 18	1320-1¼	747 (800-1¼)	1320-2	747 (800-2)
CIRCLING	1640-1¼ 1037 (1100-1¼)	1720-1½ 1117 (1200-1½)	1820-3 1217 (1300-3)	2020-3 1417 (1500-3)

- MIRL Rwy 7-25
- HIRL Rwy 18-36
- REIL Rwys 7 and 25
- REIL Rwy 18

NE-1, 16 APR 2026 to 14 MAY 2026

NE-1, 16 APR 2026 to 14 MAY 2026