


LOC I-JXN 109.1	APP CRS 254°	Rwy Ldg TDZE Apt Elev	5351 996 1001
---------------------------	------------------------	-----------------------------	--

ILS or LOC RWY 25

JACKSON COUNTY/REYNOLDS FLD (JXN)

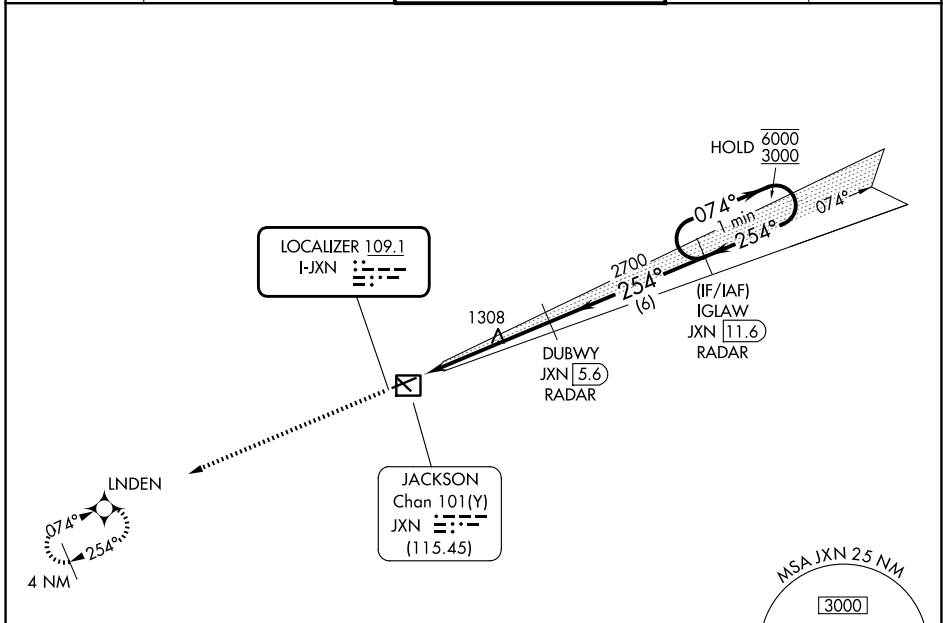
RNAV-1 GPS required. RADAR required for procedure entry.
DME or RADAR required.

⚠ For inop ALS, increase S-LOC 25 Cat C/D visibility to 1¾ SM.

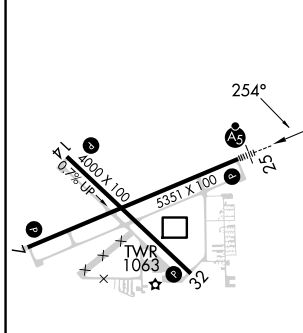
MALSR 




MISSED APPROACH: Climb to 3000 direct LNDEN and hold.

ATIS 125.725	GREAT LAKES APP CON* 127.3 335.575	JACKSON TOWER* 128.475 (CTAF) 257.8	GND CON 121.9	UNICOM 122.95
------------------------	--	---	-------------------------	-------------------------



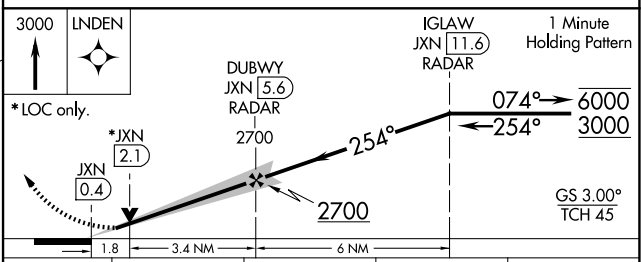
ELEV 1001	TDZE 996
-----------	----------



HIRL Rwy 7-25 
MIRL Rwy 14-32 
REIL Rws 7 and 32 

FAF to MAP 5.2 NM

Knots	60	90	120	150	180
Min:Sec	5:12	3:28	2:36	2:05	1:44



CATEGORY	A	B	C	D
S-ILS 25	1196-½		200 (200-½)	
S-LOC 25	1620-½	624 (700-½)	1620-1¾	624 (700-1¾)
CIRCLING	1620-1	619 (700-1)	1660-1¾ 659 (700-1¾)	1660-2 659 (700-2)

EC-1, 16 APR 2026 to 14 MAY 2026

EC-1, 16 APR 2026 to 14 MAY 2026