

WAAS CH 86527 W14A	APP CRS 140°	Rwy Ldg TDZE Apt Elev	4000 996 1001
--	------------------------	-----------------------------	--

RNAV (GPS) RWY 14

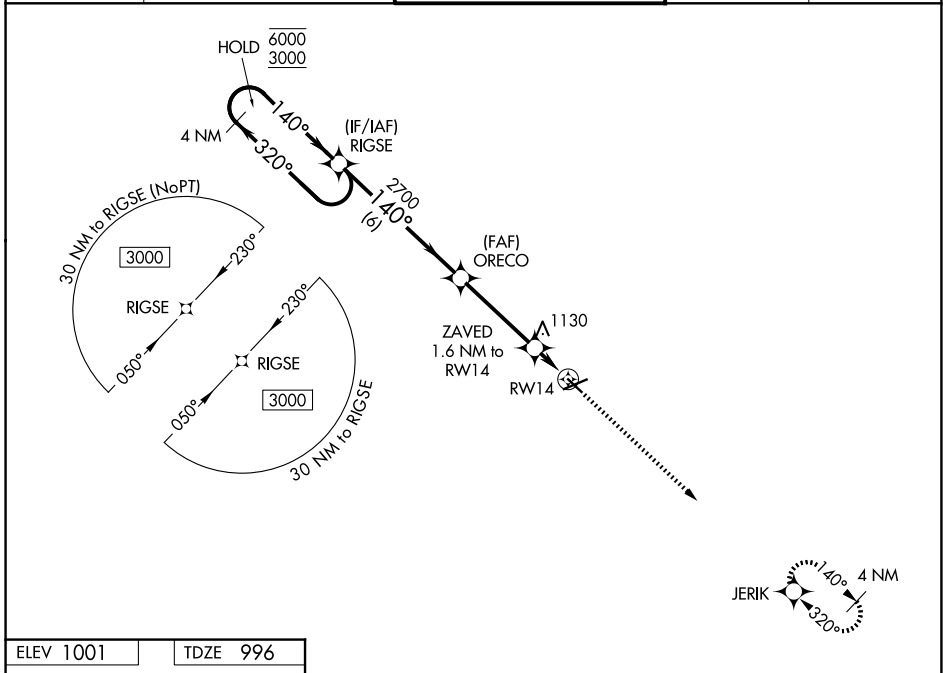
JACKSON COUNTY/REYNOLDS FLD (JXN)

RNP APCH - GPS.

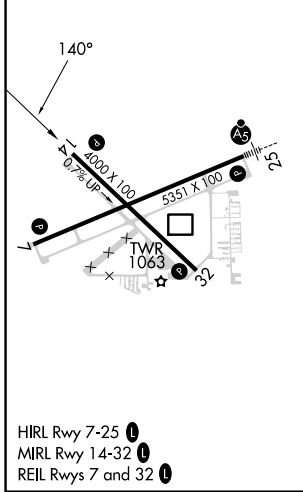
⚠ Rwy 14 helicopter visibility reduction below 3/4 SM NA. For uncompensated Baro-VNAV systems, LNAV/VNAV NA below -23°C or above 54°C.

MISSED APPROACH: Climb to 3000 direct JERIK and hold.

ATIS 125.725	GREAT LAKES APP CON★ 127.3 335.575	JACKSON TOWER★ 128.475 (CTAF) 257.8	GND CON 121.9	UNICOM 122.95
------------------------	--	---	-------------------------	-------------------------



ELEV 1001	TDZE 996
-----------	----------



	4 NM Holding Pattern VGSI and RNAV glidepath not coincident (VGSI Angle 3.00/TCH 25).	3000	JERIK
6000 ← 320° 3000 140° →	RIGSE ORECO 2700 ZAVED 1.6 NM to RW14 1540	↑ 3000	⬠ JERIK
GP 3.00° TCH 45	2700 1540 1.6	6 NM 3.6 NM 1.6	RW14
CATEGORY	A B C D		
LPV DA	1345-1 349 (400-1)		
LNAV/VNAV DA	1463-1 3/8 467 (500-1 1/8)		
LNAV MDA	1380-1 384 (400-1) 1380-1 1/8 384 (400-1 1/8)		
CIRCLING	1480-1 479 (500-1) 1660-1 3/4 659 (700-1 1/4) 1660-2 659 (700-2)		

EC-1, 16 APR 2026 to 14 MAY 2026

EC-1, 16 APR 2026 to 14 MAY 2026