

LOC I-UIIN 110.1	APP CRS 218°	Rwy Idg 7098
		TDZE 753
		Apt Elev 768

LOC BC RWY 22

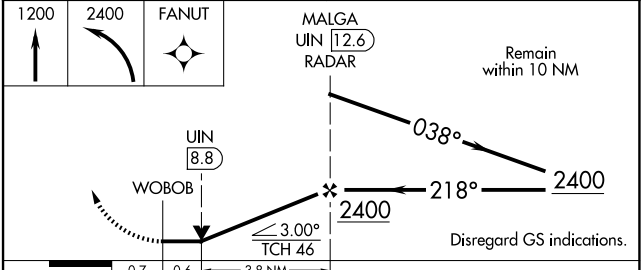
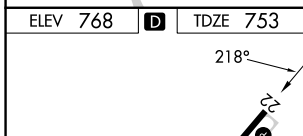
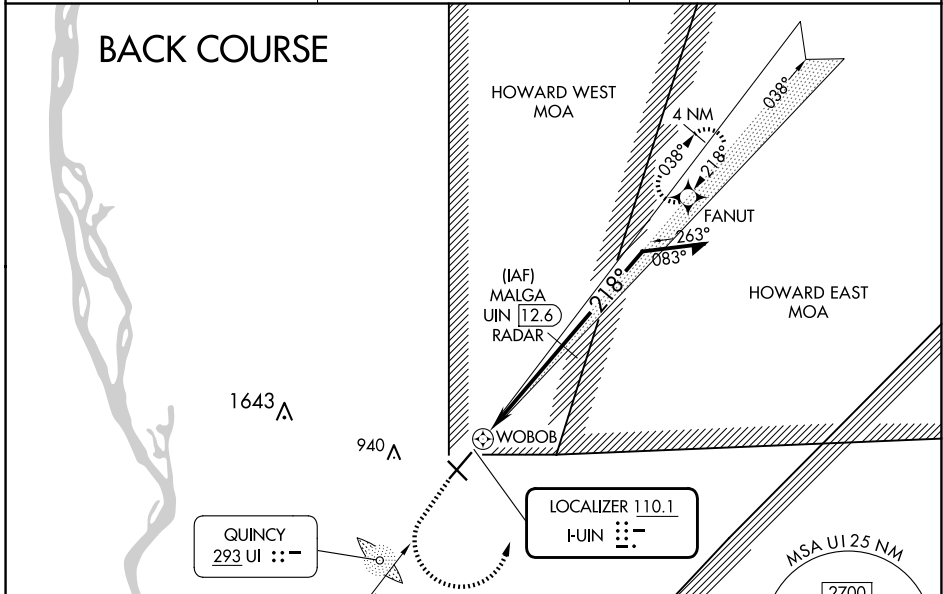
QUINCY RGNL-BALDWIN FLD (UIIN)

RADAR required for procedure entry at MALGA. RNP APCH - GPS.

▽ VDP NA when using Pittsfield altimeter setting. When local altimeter setting not received, use Pittsfield altimeter setting and increase all MDAs 80 feet and S-22 visibility Cat C/D 1/8 SM. DME from UIIN TACAN. DME use requires simultaneous reception of I-UIIN and UIIN DME.

△ NA MISSED APPROACH: Climb to 1200 then climbing left turn to 2400 direct FANUT and hold.

ASOS 121.425	KANSAS CITY CENTER 126.225 317.775	UNICOM 123.0 (CTAF) 0
------------------------	--	---------------------------------



HIRL Rwy 4-22 **0**

MIRL Rwy 13-31 **0**

REIL Rwy 22 **0**

FAF to MAP 4.4 NM

Knots	60	90	120	150	180
Min:Sec	4:24	2:56	2:12	1:46	1:28

CATEGORY	A	B	C	D
S-22	1180-1	427 (500-1)	1180-1¼	427 (500-1¼)
C CIRCLING	1180-1	1220-1	1240-1½	1320-2
	412 (500-1)	452 (500-1)	472 (500-1½)	552 (600-2)

EC-3, 16 APR 2026 to 14 MAY 2026

EC-3, 16 APR 2026 to 14 MAY 2026