

WAAS CH <b>45705</b> <b>W22A</b>	APP CRS <b>218°</b>	Rwy Idg TDZE <b>753</b> Apt Elev <b>768</b>
--	------------------------	---

# RNAV (GPS) RWY 22

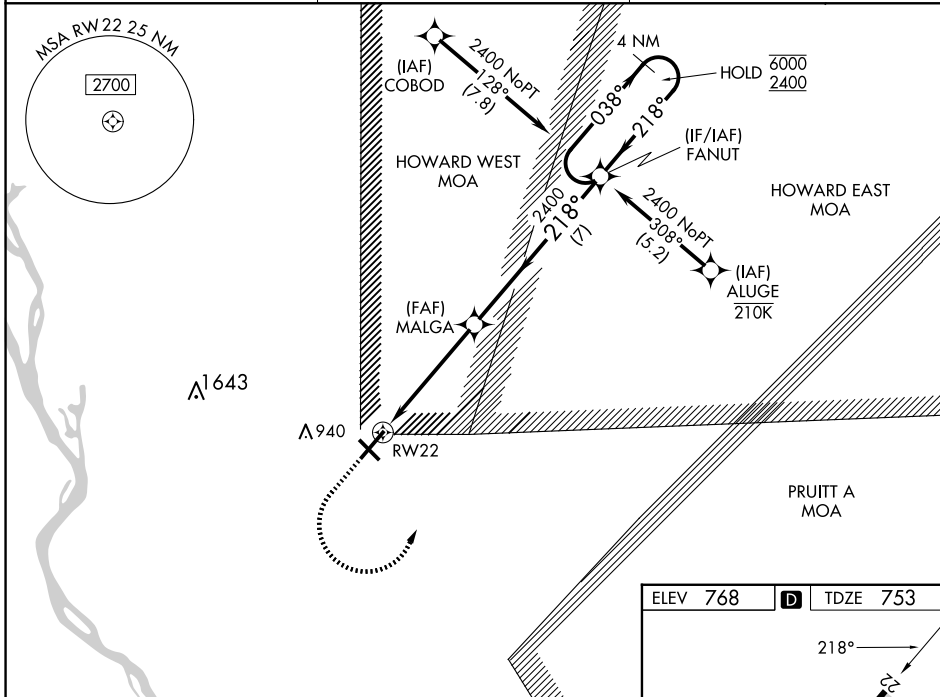
QUINCY RGNL-BALDWIN FLD (UIN)

RNP APCH - GPS.

For uncompensated Baro-VNAV systems, LNAV/VNAV NA below -21°C or above 54°C. Baro-VNAV and VDP NA when using Pittsfield altimeter setting. When local altimeter setting not received, use Pittsfield altimeter setting and increase LPV DA to 1073 feet and all visibilities 1/8 SM. Increase LNAV/VNAV DA to 1120 feet and all visibilities 1/8 SM. Increase all MDAs 80 feet and LNAV visibility Cat C/D 1/8 SM.

MISSED APPROACH: Climb to 1300 then climbing left turn to 2400 direct FANUT and hold.

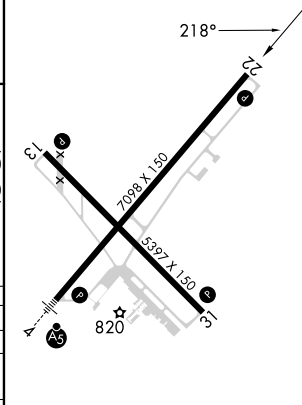
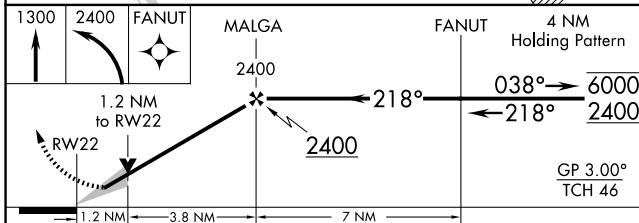
ASOS <b>121.425</b>	KANSAS CITY CENTER <b>126.225 317.775</b>	UNICOM <b>123.0 (CTAF) 0</b>
------------------------	--	---------------------------------



EC-3, 16 APR 2026 to 14 MAY 2026

EC-3, 16 APR 2026 to 14 MAY 2026

ELEV 768	D	TDZE 753
----------	---	----------



CATEGORY	A	B	C	D
LPV DA		1003-3/4	250 (300-3/4)	
LNAV/VNAV DA		1050-7/8	297 (300-7/8)	
LNAV MDA	1180-1	427 (500-1)	1180-1/4	427 (500-1/4)
CIRCLING	1180-1 412 (500-1)	1220-1 452 (500-1)	1240-1/2 472 (500-1/2)	1320-2 552 (600-2)

HIRL Rwy 4-22 0

MIRL Rwy 13-31 0

REIL Rwy 22 0