

WAAS CH 61210 W31A	APP CRS 313°	Rwy Idg TDZE 769 Apt Elev 769	5146
----------------------------------------	------------------------	---------------------------------------------------	-------------

RNAV (GPS) RWY 31

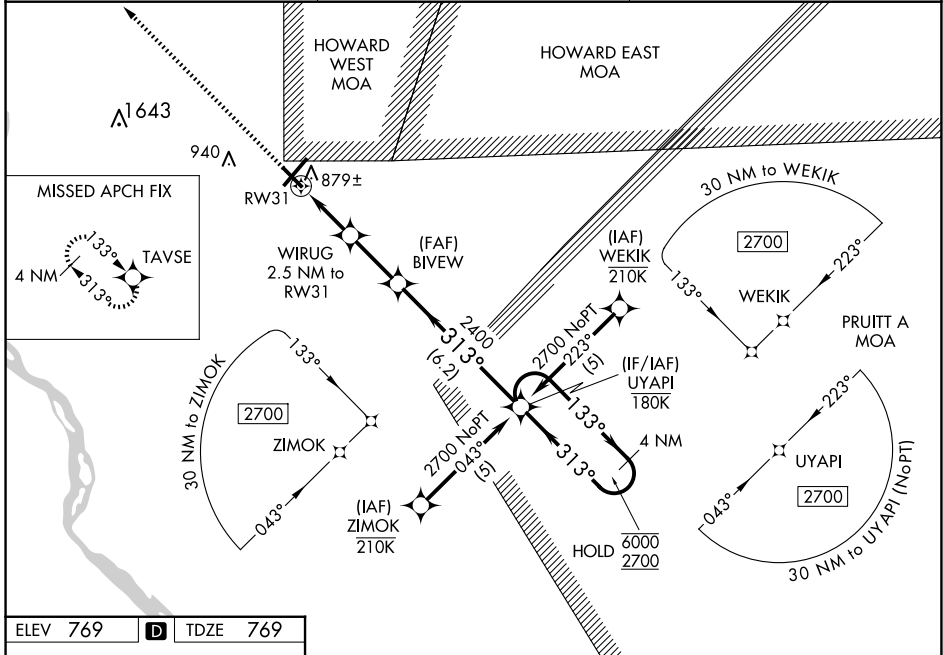
QUINCY RGNL-BALDWIN FLD (UIN)

RNP APCH.

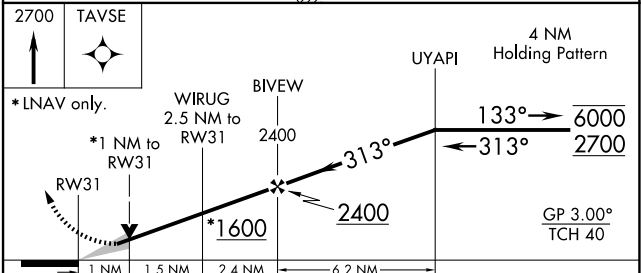
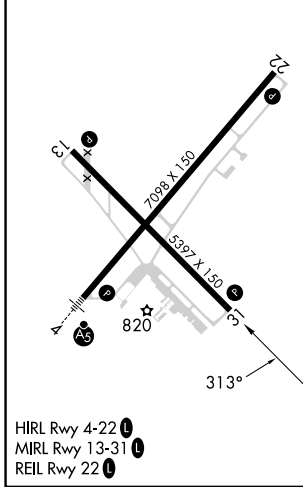
▽
▲ For uncompensated Baro-VNAV systems, LNAV/VNAV NA below -16° C or above 54° C.

MISSED APPROACH:
Climb to 2700 direct TAVSE and hold.

ASOS 121.425	KANSAS CITY CENTER 126.225 317.775	UNICOM 123.0 (CTAF) 1
------------------------	----------------------------------------------	---------------------------------



ELEV 769	D	TDZE 769
-----------------	----------	-----------------



CATEGORY	A	B	C	D
LPV DA		1057-1	288 (300-1)	
LNAV/VNAV DA		1168-1½	399 (400-1½)	
LNAV MDA		1140-1	371 (400-1)	1140-1½ 371 (400-1½)
CIRCLING	1180-1 411 (500-1)	1220-1 451 (500-1)	1240-1½ 471 (500-1½)	1320-2 551 (600-2)

EC-3, 16 APR 2026 to 14 MAY 2026

EC-3, 16 APR 2026 to 14 MAY 2026