

RNAV (GPS) RWY 22L

LAFAYETTE RGNL/PAUL FOURNET FLD (L.F.T)

WAAS CH 50503 W22A	APP CRS 216°	Rwy Ldg TDZE Apt Elev	7659 37 41
--	------------------------	-----------------------------	---------------------------------------

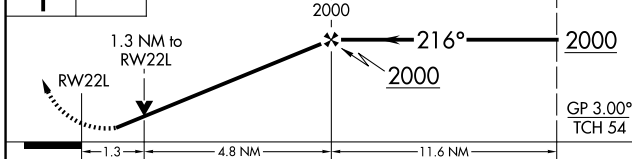
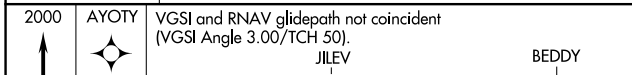
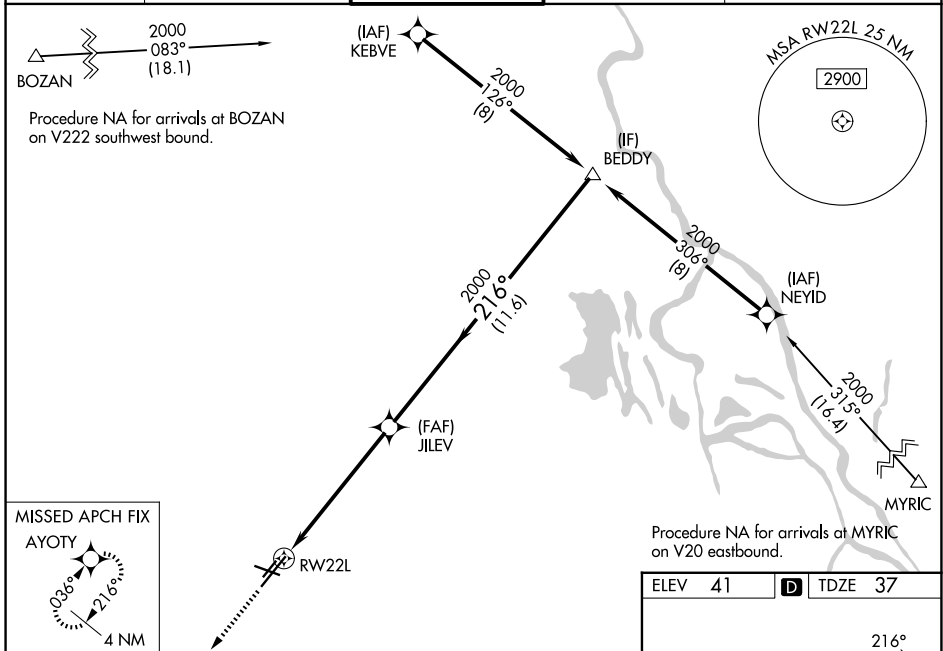
RNP APCH - GPS

▼ Baro-VNAV and VDP NA when using ARA altimeter setting. For uncompensated Baro-VNAV systems, LNAV/VNAV NA below -4°C or above 54°C. Rwy 22L helicopter visibility reduction below RVR 4000 NA. Circling Rwy 4L, 4R, 22R, and 11 NA at night. Inop table does not apply to LPV all Cats. When local altimeter setting not received, use ARA altimeter setting and increase LPV DA to 316 feet, increase LNAV/VNAV DA to 377 feet, increase all MDAs 40 feet and LNAV visibility Cat C/D to RVR 5000 and Circling visibility Cat C/D ¼ SM. For inop ALS increase LNAV/VNAV all Cats visibility to RVR 4500 and increase LNAV Cats A and B visibility to RVR 5500.



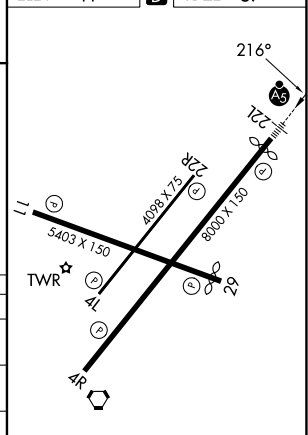
MISSED APPROACH:
Climb to 2000 direct
AYOTY and hold.

ATIS 134.05	LAFAYETTE APP CON★ 121.1 363.0	LAFAYETTE TOWER★ 118.5 (CTAF) 0 257.8	GND CON 121.8	UNICOM 122.95
-----------------------	--	---	-------------------------	-------------------------



CATEGORY	A	B	C	D
LPV DA		287/40	250 (300-¾)	
LNAV/VNAV DA		348/40	311 (400-¾)	
LNAV MDA	480/40	443 (500-¾)	480/45	443 (500-¾)
CIRCLING	540-1 499 (500-1)	580-1 539 (600-1)	700-1¾ 659 (700-1¾)	700-2 659 (700-2)

ELEV 41	D	TDZE 37
---------	---	---------



REIL Rwy 4L, 4R, 11, 22R and 29
MIRL Rwy 11-29 and 4L-22R
HIRL Rwy 4R-22L