

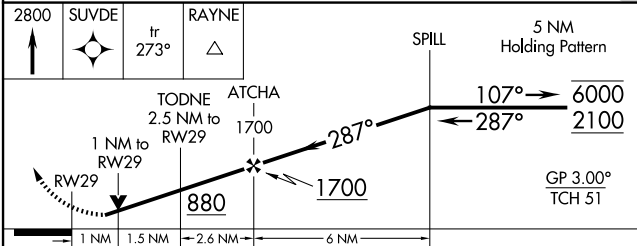
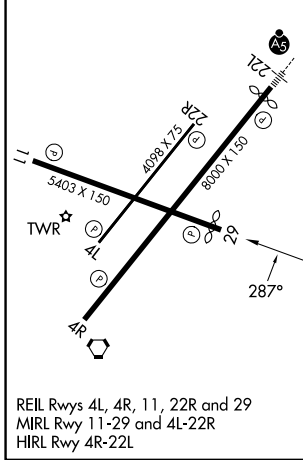
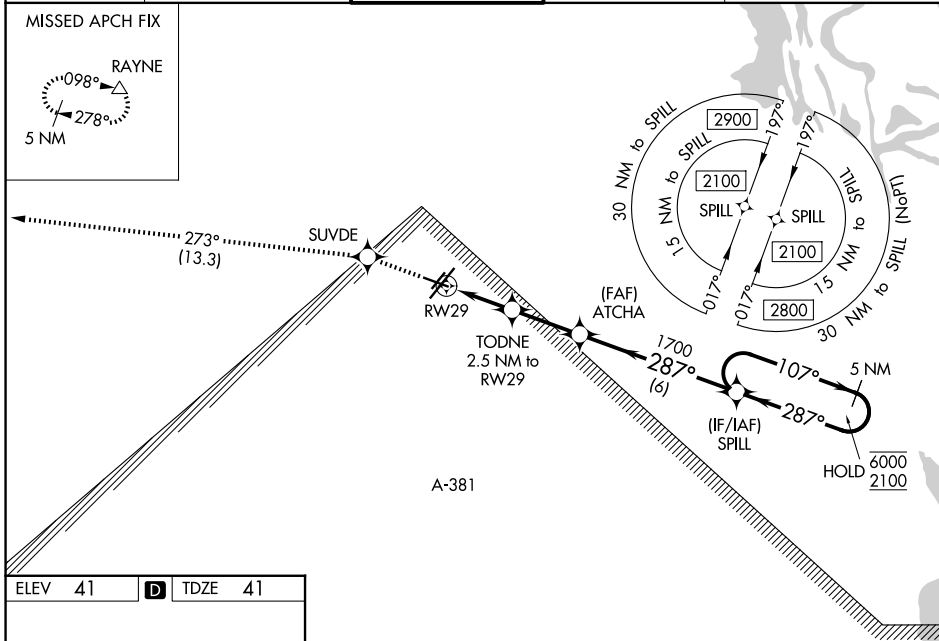
WAAS CH <b>45703</b> <b>W29A</b>	APP CRS <b>287°</b>	Rwy Ldg <b>5155</b> TDZE <b>41</b> Apt Elev <b>41</b>
--	------------------------	---

# RNAV (GPS) RWY 29

LAFAYETTE RGNL/PAUL FOURNET FLD (L.F.T.)

RNP APCH - GPS.		<p><b>MISSED APPROACH:</b> Climb to 2800 direct SUVDE and on track 273° to RAYNE and hold.</p>
<p><b>⚠</b> Rwy 29 helicopter visibility reduction below 3/4 SM NA. For uncompensated Baro-VNAV systems, LNAV/VNAV NA below -4°C or above 54°C. Circling Rwy 11, 4R, 4L, and 22R NA at night. Baro-VNAV and VDP NA when using ARA altimeter setting. When local altimeter setting not received, use ARA altimeter setting and increase LPV DA to 320 feet and all visibilities 1/2 SM. Increase LNAV/VNAV DA to 320 feet and visibilities 1/2 SM. Increase all MDAs 40 feet and LNAV visibility Cat C/D 1/2 SM, and Circling visibility Cat C/D 1/2 SM.</p>		

ATIS <b>134.05</b>	LAFAYETTE APP CON★ <b>121.1 363.0</b>	LAFAYETTE TOWER★ <b>118.5 (CTAF) 257.8</b>	GND CON <b>121.8</b>	UNICOM <b>122.95</b>
-----------------------	--	---	-------------------------	-------------------------



CATEGORY	A	B	C	D
LPV DA		291-3/4	250 (300-3/4)	
LNAV/VNAV DA		291-3/4	250 (300-3/4)	
LNAV MDA		400-1	359 (400-1)	
CIRCLING	500-1 459 (500-1)	580-1 539 (600-1)	700-1 3/4 659 (700-1 3/4)	700-2 659 (700-2)

SC-4, 16 APR 2026 to 14 MAY 2026

SC-4, 16 APR 2026 to 14 MAY 2026