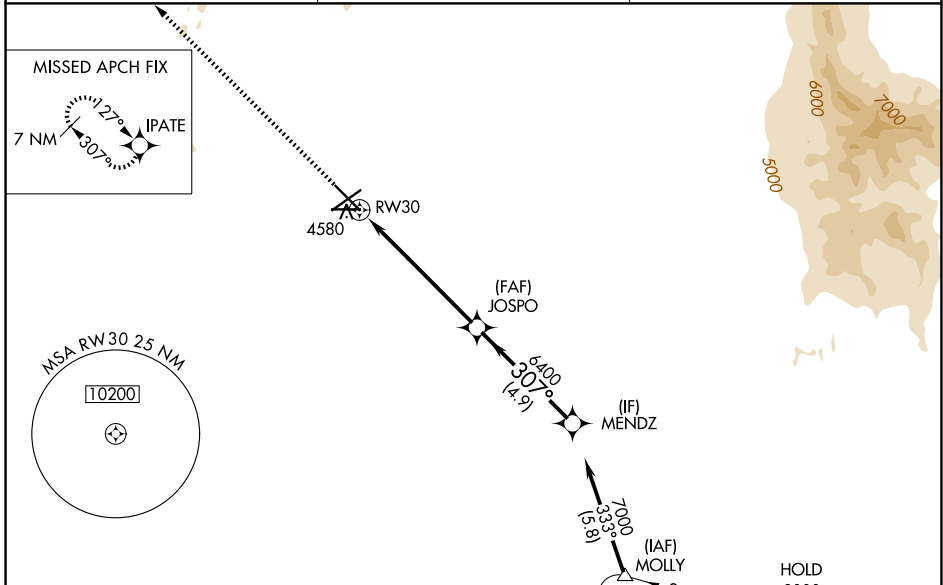


WAAS CH 63136 W30A	APP CRS 307°	Rwy Ldg TDZE Apt Elev	7500 4444 4457
--	------------------------	-----------------------------	---

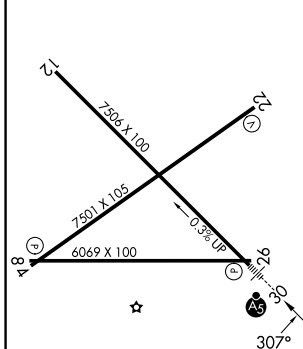
RNAV (GPS) RWY 30

LAS CRUCES INTL (LRU)

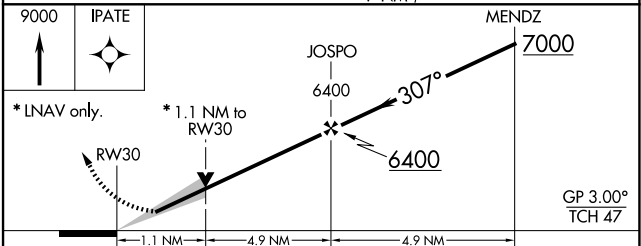
<p>⚠ For uncompensated Baro-VNAV systems, LNAV/VNAV NA below -12°C (11°F) or above 51°C (124°F). DME/DME RNP-0.3 NA. Baro-VNAV and VDP NA when using Deming altimeter setting. When local altimeter setting not received, use Deming altimeter setting; increase LPV DA to 4758 feet, LNAV/VNAV DA to 4863 feet and all visibilities 3/8 mile; increase all MDA 120 feet and visibility Cat C and D 1/2 mile.</p>	<p>MALSRL</p>	<p>MISSED APPROACH: Climb to 9000 direct IPATE and hold, continue climb-in-hold to 9000.</p>
	<p>AWOS-3 119.025</p>	<p>ALBUQUERQUE CENTER 128.2 285.5</p>



ELEV 4457	D	TDZE 4444
------------------	----------	------------------



REIL Rwy 12
HIRL Rwy 12-30
MIRL Rwy 4-22 and 8-26



CATEGORY	A	B	C	D
LPV DA		4644-1/2	200 (200-1/2)	
LNAV/VNAV DA		4749-5/8	305 (300-5/8)	
LNAV MDA	4840-1/2	396 (400-1/2)	4840-5/8	396 (400-5/8)
CIRCLING	4900-1	5040-1	5320-2 1/2	5320-2 3/4
	443 (500-1)	583 (600-1)	863 (900-2 1/2)	863 (900-2 3/4)

SW-1, 16 APR 2026 to 14 MAY 2026

SW-1, 16 APR 2026 to 14 MAY 2026