

PALESTINE, TEXAS

AL-871 (FAA)

25275

VOR/DME FZT <b>111.4</b> Chan <b>51</b>	APP CRS <b>202°</b>	Rwy Ldg TDZE <b>416</b> Apt Elev <b>423</b>	<b>5005</b> <b>416</b> <b>423</b>
---	------------------------	---	---

# VOR RWY 18

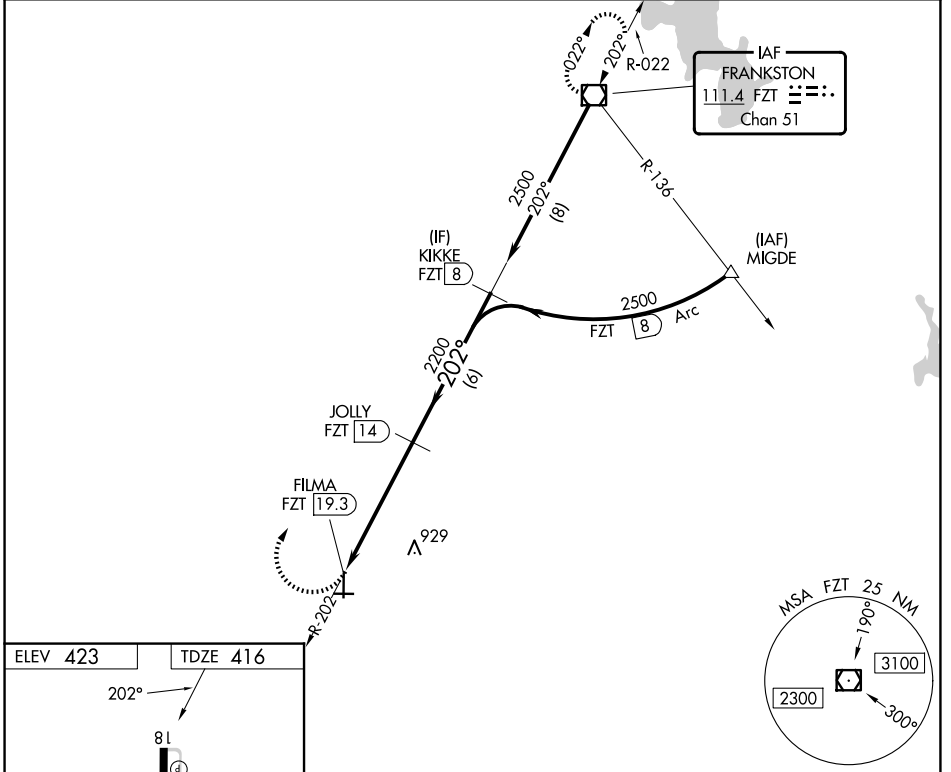
PALESTINE MUNI (PSN)

DME required.

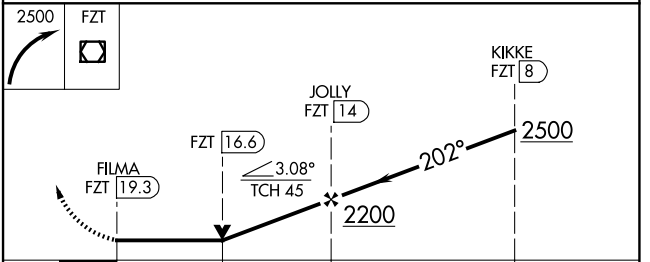
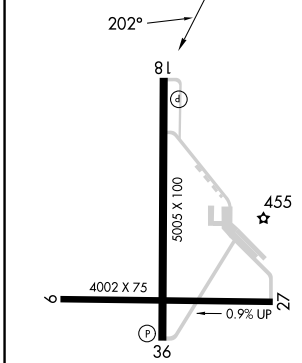
**NA** Rwy 18 helicopter visibility reduction below 3/4 SM NA.

MISSING APPROACH: Climbing right turn to 2500 direct FZT VOR/DME and hold.

AWOS-3PT <b>118.025</b>	FORT WORTH CENTER <b>135.25 279.65</b>	UNICOM <b>122.7 (CTAF)</b>
----------------------------	---	-------------------------------



ELEV 423 TDZE 416



CATEGORY	A	B	C	D
S-18	1320-1¼ 904 (900-1¼)		1320-2½ 904 (900-2½)	
<b>C</b> CIRCLING	1320-1¼ 897 (900-1¼)		1360-2¾ 937 (1000-2¾)	1360-3 937 (1000-3)

REIL Rwy 36  
MIRL Rwy 18-36 and 9-27

31°47'N - 95°42'W

PALESTINE MUNI (PSN)  
**VOR RWY 18**

SC-5, 16 APR 2026 to 14 MAY 2026

SC-5, 16 APR 2026 to 14 MAY 2026