


LOC/DME I-GRB 109.5 Chan 32	APP CRS 242°	Rwy Ldg 7699 TDZE 682 Apt Elev 695
---	------------------------	---

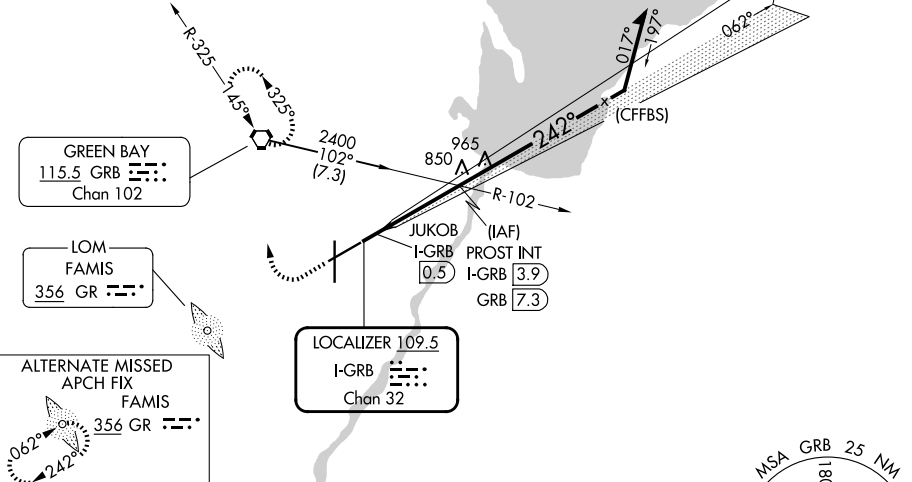
LOC BC RWY 24

GREEN BAY/AUSTIN STRAUBEL INTL (GRB)

		MISSED APPROACH: Climb to 1500 then climbing right turn to 2500 direct GRB VORTAC and hold.	
ATIS 124.1	GREEN BAY APP CON* 119.4 338.2	GREEN BAY TOWER* 118.7(CTAF) 257.8	GND CON 121.9

Procedure NA for arrival on GRB VORTAC
airway radials 085 CW 161.

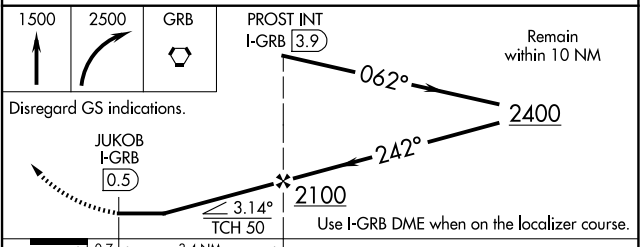
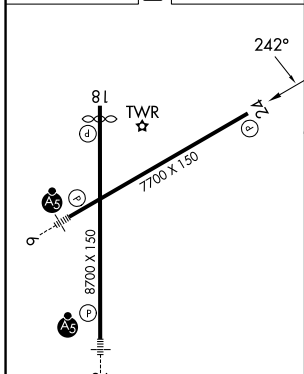
BACK COURSE



EC-3, 16 APR 2026 to 14 MAY 2026

EC-3, 16 APR 2026 to 14 MAY 2026

ELEV 695	D	TDZE 682
----------	----------	----------



REIL Rwy 18	1
HIRL Rwys 6-24 and 18-36	1
FAF to MAP	3.4 NM
Knots	60 90 120 150 180
Min:Sec	3:24 2:16 1:42 1:21 1:08
CATEGORY	A B C D
S-24	1100-1 418 (500-1) 1100-1½ 418 (500-1½)
CIRCLING	1200-1 505 (600-1) 1300-1¾ 605 (700-1¾) 1300-2 605 (700-2)