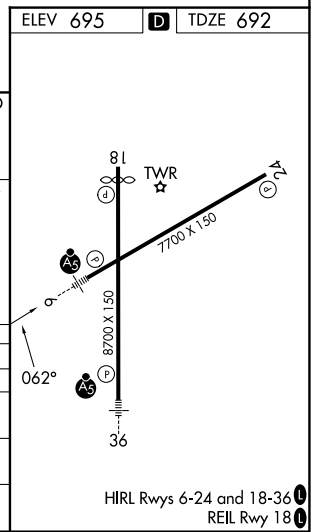
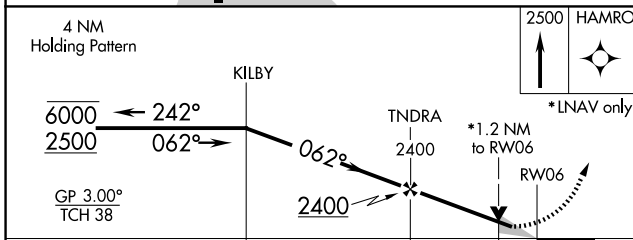
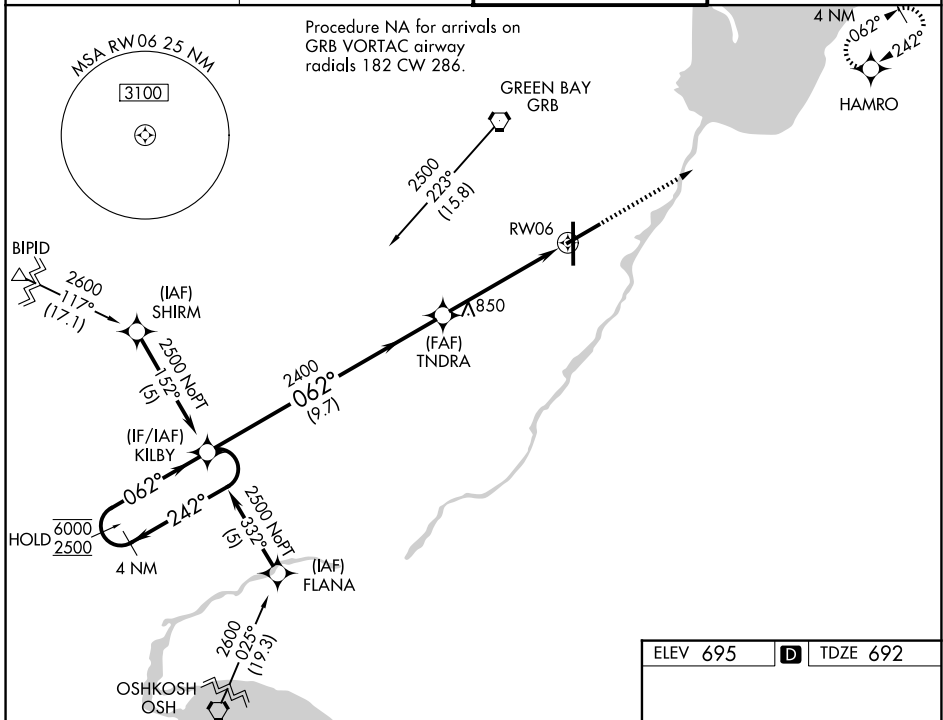


WAAS CH <b>63015</b> <b>W06A</b>	APP CRS <b>062°</b>	Rwy Idg TDZE Apt Elev	<b>7699</b> <b>692</b> <b>695</b>
--	------------------------	-----------------------------	---

# RNAV (GPS) RWY 6

GREEN BAY/AUSTIN STRAUBEL INTL (GRB)

RNP APCH. ▼ For uncompensated Baro-VNAV systems, LNAV/VNAV NA below -16°C or above 54°C. For inop ALS, increase LNAV/VNAV all Cats visibility to RVR 4500, and LNAV Cts C and D ASR visibility to RVR 6000. **RVR 1800 authorized with use of FD or AP or HUD to DA		MALSR AS	MISSED APPROACH: Climb to 2500 direct HAMRO and hold.
ATIS <b>124.1</b>	GREEN BAY APP CON* <b>119.4 338.2</b>	GREEN BAY TOWER* <b>118.7(CTAF) 257.8</b>	GND CON <b>121.9</b>



CATEGORY	A	B	C	D
LPV DA**	892/24		200 (200-½)	
LNAV/VNAV DA	1000/24 308 (400-½)		1000/40 308 (400-¾)	
LNAV MDA	1100/24 408 (500-½)		1100/40 408 (500-¾)	
CIRCLING	1200-1 505 (600-1)		1300-1¾ 605 (700-1½) 1300-2 605 (700-2)	

EC-3, 16 APR 2026 to 14 MAY 2026

EC-3, 16 APR 2026 to 14 MAY 2026