

WAAS CH 90330 W13A	APP CRS 127°	Rwy Idg 5200 TDZE 1196 Apt Elev 1201
--	------------------------	---

RNAV (GPS) RWY 13

WAUSAU DOWNTOWN (A U W)

RNP APCH.

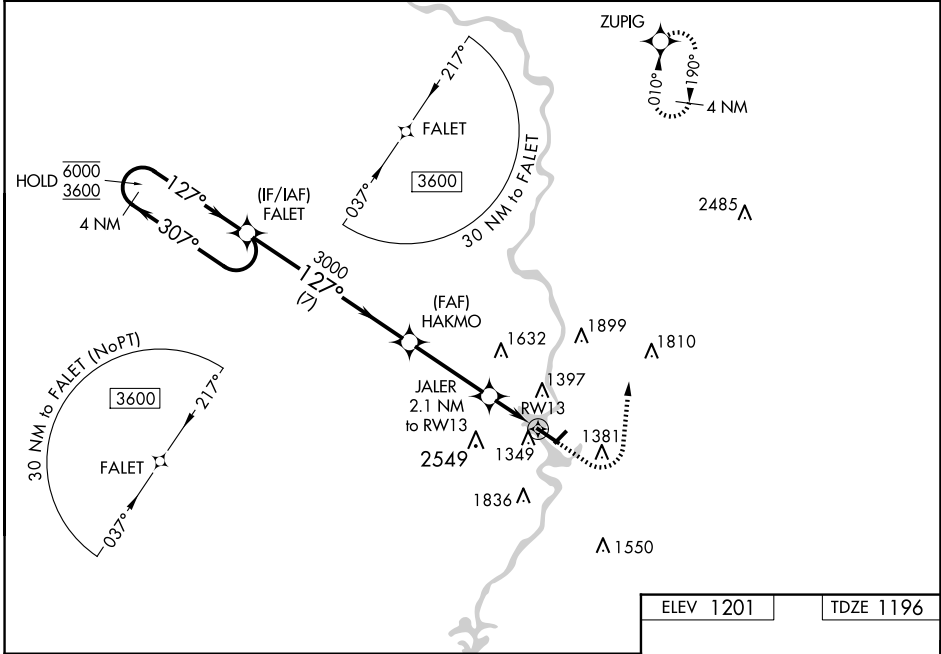
▼ Circling NA to Rwsy 12W and 30W.
▲ Circling NA southwest of Rwy 13-31.
 For uncompensated Baro-VNAV systems, LNAV/VNAV NA below -17°C or above 54°C.

MISSED APPROACH: Climb to 1800 then climbing left turn to 4000 direct ZUPIG and hold.

ASOS **125.925**

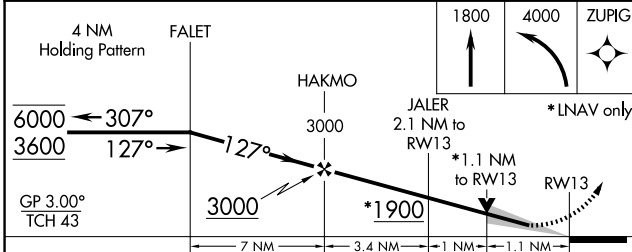
MINNEAPOLIS CENTER **124.4 317.7**

UNICOM **122.7 (CTAF) 0**

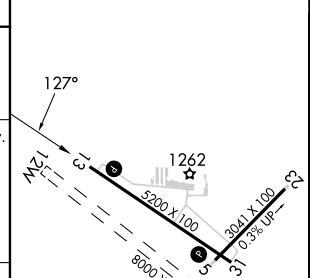


EC-3, 16 APR 2026 to 14 MAY 2026

EC-3, 16 APR 2026 to 14 MAY 2026



ELEV 1201	TDZE 1196
-----------	-----------



CATEGORY	A	B	C	D
LPV DA		1446-3/4	250 (300-3/4)	
LNAV/VNAV DA		1534-1 1/8	338 (400-1 1/8)	
LNAV MDA	1600-1	404 (400-1)	1600-1 1/8	404 (400-1 1/8)
C CIRCLING	1840-1	639 (700-1)	1960-2 1/4 759 (800-2 1/4)	2260-3 1059 (1100-3)

REIL Rwsy 13 and 31 **0**
 MRL Rwsy 5-23 and 13-31 **0**