

WAAS CH 45730 W31A	APP CRS 307°	Rwy Idg 5200 TDZE 1195 Apt Elev 1201
--	------------------------	---

RNAV (GPS) RWY 31

WAUSAU DOWNTOWN (AUW)

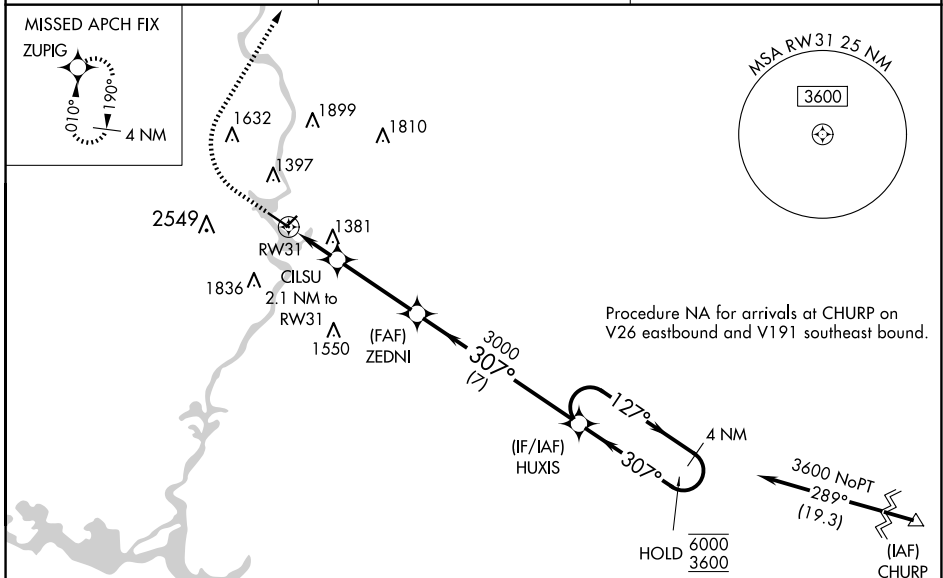
RNP APCH.

⚠ Circling NA to Rws 12W and 30W. Circling NA southwest of Rwy 13-31. For uncompensated Baro-VNAV systems, LNAV/VNAV NA below -21°C or above 54°C.

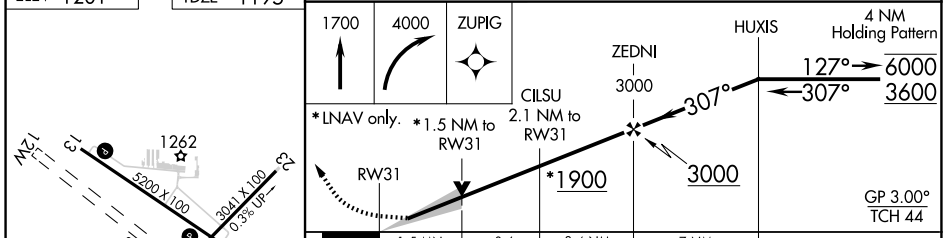
⬆ MISSED APPROACH: Climb to 1700 then climbing right turn to 4000 direct ZUPIG and hold.

****** Missed approach requires minimum climb of 300 feet per NM to 2100.

ASOS 125.925	MINNEAPOLIS CENTER 124.4 317.7	UNICOM 122.7 (CTAF) 0
------------------------	--	---------------------------------



ELEV 1201	TDZE 1195
-----------	-----------



CATEGORY	A	B	C	D
LPV DA		1445-7/8	250 (300-7/8)	
LNAV/VNAV DA		**1505-1	310 (400-1)	
LNAV/VNAV DA		1661-1 5/8	466 (500-1 5/8)	
LNAV MDA	1700-1	505 (500-1)	1700-1 3/8	505 (500-1 3/8)
C CIRCLING	1840-1	639 (700-1)	1960-2 759 (800-2)	2260-3 1059 (1100-3)

WAUSAU, WISCONSIN
Amdt 1A 15AUG19

44°56'N-89°38'W

WAUSAU DOWNTOWN (AUW)

RNAV (GPS) RWY 31

EC-3, 16 APR 2026 to 14 MAY 2026

EC-3, 16 APR 2026 to 14 MAY 2026